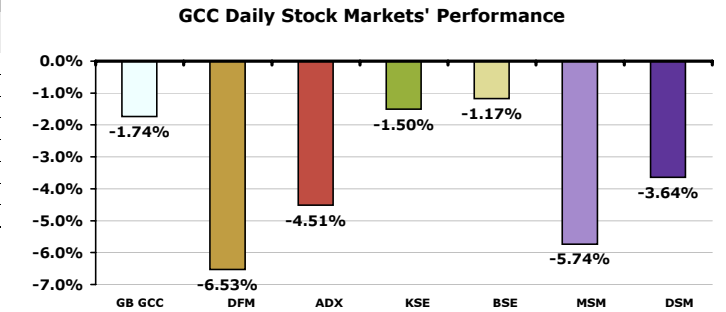


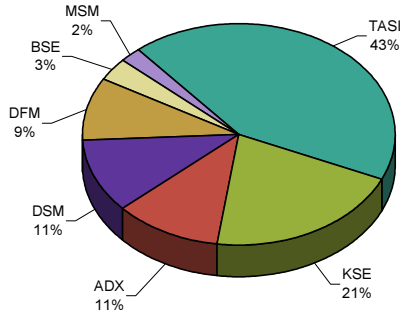
GCC Stock Markets

October 16, 2008

GCC Stock Market Indices				
Index	Last	Change	Change (%)	Volume (Million)
GB GCC	4,808.73	-85.14	-1.74	994.92
Saudi (TASI)	6,863.15	0.00	0.00	0.00
Dubai (DFM)	3,204.11	-223.76	-6.53	273.25
Abu Dhabi (ADX)	3,366.72	-159.10	-4.51	125.53
Kuwait (KSE)	11,543.70	-176.00	-1.50	568.33
Bahrain (BSE)	2,318.64	-27.42	-1.17	2.36
Oman (MSM)	7,248.76	-441.53	-5.74	14.20
Qatar (DSM)	7,803.97	-294.99	-3.64	11.25



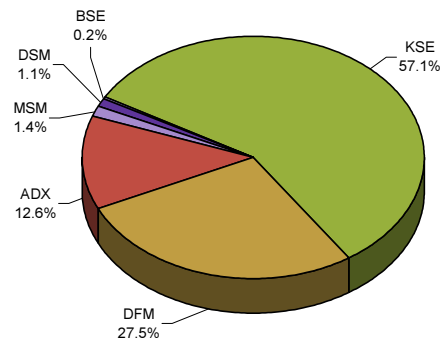
Daily Market Cap Review



Advancers & Decliners

Market	Traded stocks	Advancers	Decliners	No change
Saudi Stock Market	Close	0	0	0
Dubai Financial Market	29	1	28	0
Abu Dhabi Securities Exchange	37	10	27	0
Kuwait Stock Exchange	155	15	114	26
Bahrain Stock Exchange	11	2	4	5
Muscat Securities Market	46	5	37	4
Doha Securities Market	39	2	37	0

Daily Volume Distribution

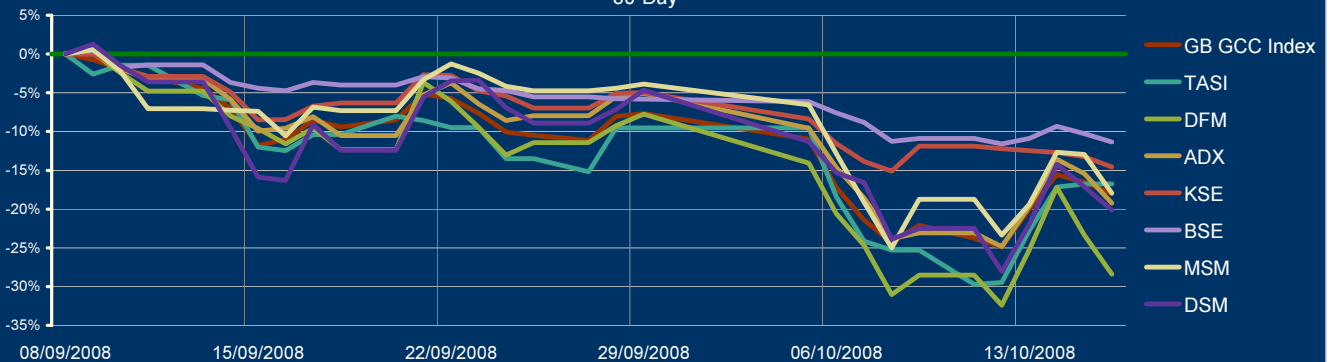


GulfBase GCC Indices

Index	Last	Change (%)		
		Day	Week	YTD
GCC General Index	4,808.73	-1.74	5.22	-31.32
GCC Large-Cap	4,742.79	-1.71	7.16	-32.66
GCC Med-Cap	4,017.74	-1.99	2.01	-26.07
GCC Small-Cap	5,622.99	-2.20	-0.81	-31.68
GCC Micro-Cap	5,903.58	-1.70	0.38	-33.25
Cement	4,027.26	-0.87	1.74	-32.32
Commercial Srv & Supplies	4,770.65	-2.46	6.15	-27.49
Commercial Banks	5,183.57	-1.88	4.59	-29.68
Consumer Discretionary	2,597.88	-2.74	-1.96	-26.64
Consumer Staple	3,506.55	-0.37	10.20	-28.86
Energy	1,942.59	-2.44	2.60	-20.91
Financial Srv	2,581.68	-3.10	-1.56	-27.53
Health Care	2,617.91	0.96	4.38	-32.53
Industrial	5,501.62	-0.49	4.04	-27.40
Insurance	1,935.63	-5.26	-7.62	-49.78
Basic Material	8,725.74	-0.06	12.58	-32.86
Multi-Sector Holding	3,222.75	-2.92	3.77	-43.28
Real Estate	3,367.29	-4.40	0.61	-43.77
Telecom	4,434.08	-0.19	11.66	-28.32
Transport	1,895.49	-2.90	0.48	-35.07
Utilities	2,451.64	-0.71	3.78	-38.56

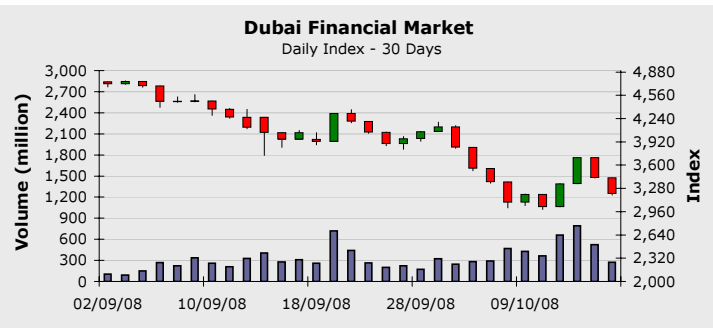
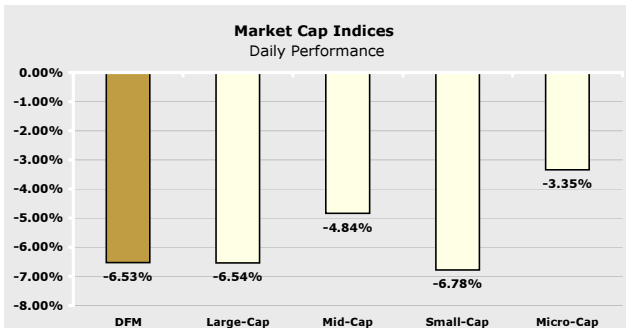
* Base date is 01/01/1999, Base Value = 1,000

GCC Stock Markets Performance 30-Day



Dubai Financial Market

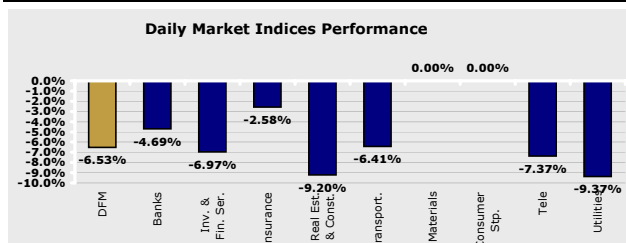
October 16, 2008



Index *	Last	Change (%)		
		Day	Week	YTD
Large-Cap	2,286.79	-6.54	1.74	-47.39
Mid-Cap	3,487.52	-4.84	2.47	-24.04
Small -Cap	3,592.31	-6.78	-0.20	-34.68
Micro-Cap	2,812.15	-3.35	0.47	4.12

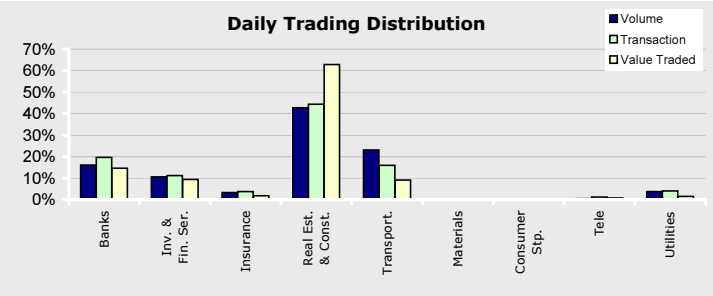
* Base date is 01/01/1999, Value = 1,000

Company	Price	Change (%)	Market Cap (AED Mil)	P/E	P/B
ENBD	7.18	-4.90	36,277	8.60	1.37
EMAAR	5.52	-9.66	33,624	5.09	0.88
DFMC	2.54	-7.30	20,182	16.13	2.15
DU	4.40	-7.37	17,600	35.63	7.33
DIB	4.94	-7.84	17,020	7.41	1.63
CBD	8.10	0.00	11,436	10.68	2.31
GGICO	7.35	-8.01	7,938	9.97	2.55
DIC	2.17	-7.26	7,230	4.16	1.06
DEYAAR	1.21	-8.33	6,991	9.50	1.05
UPP	2.12	-6.19	6,489	6.86	1.12



DFM	16/10/2008	15/10/2008	Change (%)	50-day Average	Change (%)
Trading Vol. (million)	273.25	524.31	-47.88	273.17	0.03
Transactions	9,368	15,200	-38.37	8,833	6.05
Value Traded (AED Million)	811.36	1,595.09	-49.13	1,026	-20.95

Index	Last	Change (%)		
		Day	Week	YTD
DFM	3,204.11	-6.53	0.19	-45.99
Banks	2,107.96	-4.69	-0.04	-38.27
Inv. & Fin. Services	4,681.93	-6.97	4.77	-41.93
Insurance	3,817.80	-2.58	0.51	-17.54
Real Estate & Const.	5,635.27	-9.20	-2.47	-58.81
Transportation	577.18	-6.41	1.64	-38.30
Materials	314.98	0.00	-8.38	-9.59
Consumer Staples	378.00	0.00	10.20	-43.07
Telecommunication	711.97	-7.37	10.00	-40.62
Utilities	2,091.35	-9.37	-2.52	-63.55



Company	Volume		Price	
	Shares	Market %	Last	% Change
EMAAR	60,822,789	22.26	5.52	-9.65
AIRARABIA	36,926,775	13.51	1.20	-6.97
GULFNAV	24,853,023	9.10	1.12	-8.94
DEYAAR	23,179,190	8.48	1.21	-8.33
DFMC	21,344,059	7.81	2.54	-7.29

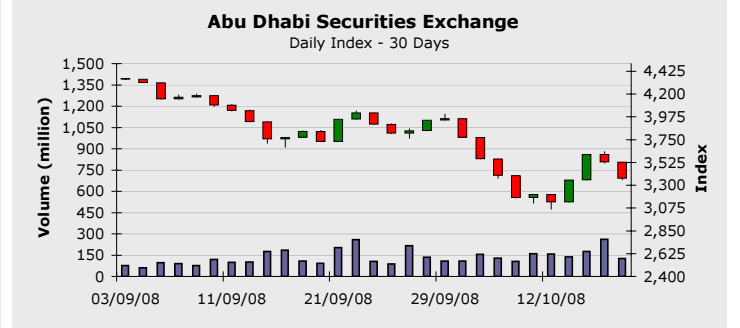
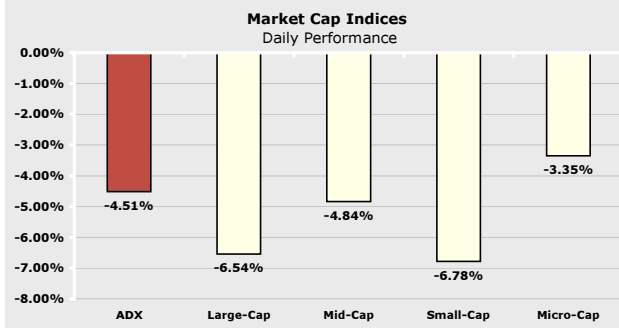
Company New

Company	Price			Volume
	Last	Change	% Change	
ALSALAMSUDAN	3.60	0.09	2.56	2,043,950

Company	Price			Volume
	Last	Change	% Change	
ALMADINA.DFM	4.96	-0.55	-9.98	10,000
TAMWEEL	2.44	-0.27	-9.96	15,517,205
ARTC	7.43	-0.82	-9.93	13,842,109
DARTAKAFUL	2.58	-0.28	-9.79	100,945
GLOBAL.UAE	12.45	-1.35	-9.78	1,900

Abu Dhabi Securities Exchange

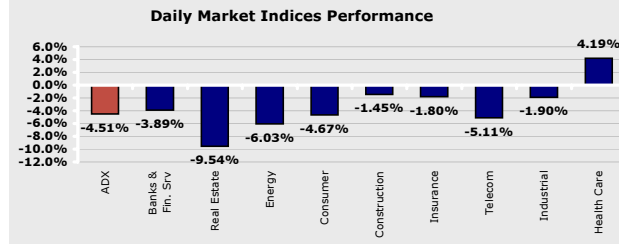
October 16, 2008



Index *	Last	Change (%)		
		Day	Week	YTD
Large-Cap	2,286.79	-6.54	1.74	-47.39
Mid-Cap	3,487.52	-4.84	2.47	-24.04
Small -Cap	3,592.31	-6.78	-0.20	-34.68
Micro-Cap	2,812.15	-3.35	0.47	4.12

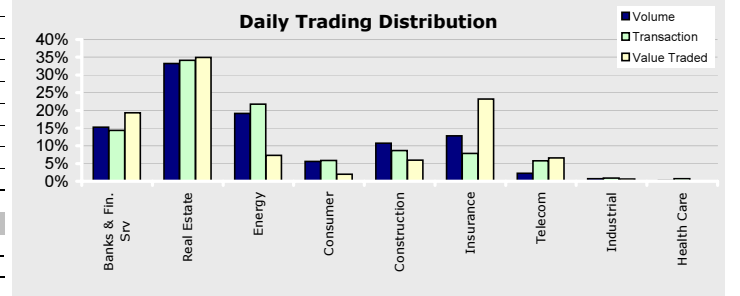
* Base date is 01/01/1999, Value = 1,000

Company	Price	Change (%)	Market Cap (AED Mil)	P/E	P/B
ETISALAT	14.70	-8.13	88,046	10.14	3.02
NBAD	12.10	5.22	23,917	7.48	1.75
ALDAR	5.99	-6.99	15,418	4.24	1.01
FGB	10.60	-8.62	14,575	5.58	1.29
ADCB	2.98	-3.87	14,334	6.75	1.21
SOROUH	4.88	-7.40	12,200	6.98	2.36
ARKAN.ADSM	5.96	0.34	10,430	42.66	5.13
UNB	5.00	2.04	9,375	6.74	1.34
ADIB	4.60	-2.34	9,065	9.62	1.65
TAQA	1.94	-4.90	8,051	4.87	1.18



ADX	16/10/2008	15/10/2008	Change (%)	50-day Average	Change (%)
Trading Vol. (million)	125.53	262.51	-52.18	116.24	8.00
Transactions	3,386	5,894	-42.55	3,266	3.68
Value Traded (AED Million)	544.78	1,225.53	-55.55	626	-12.99

Index	Last	Change (%)		
		Day	Week	YTD
ADX	3,366.72	-4.51	4.97	-26.04
Banks & Fin. Ser.	4,306.39	-3.89	4.46	-28.41
Real Estate	791.66	-9.54	3.45	-48.12
Energy	224.52	-6.03	4.83	-45.48
Consumer	1,759.41	-4.67	0.21	-8.83
Construction	5,608.19	-1.45	4.02	8.78
Insurance	3,850.50	-1.80	-1.72	17.95
Telecommunication	2,532.95	-5.11	8.00	-22.69
Industrial	2,608.01	-1.90	2.69	-6.83
Health Care	1,773.03	4.19	21.83	11.60



Company	Volume		Price	
	Shares	Market %	Last	% Change
ALDAR	21,303,144	16.97	5.99	-6.98
DANA	17,259,583	13.75	1.10	-3.50
RAKCC	11,276,739	8.98	1.85	-7.96
SOROUH	10,474,971	8.34	4.88	-7.40
METHAQ	10,152,001	8.09	7.70	-3.75

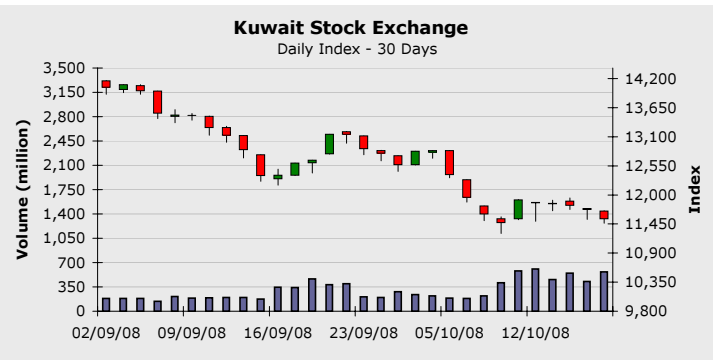
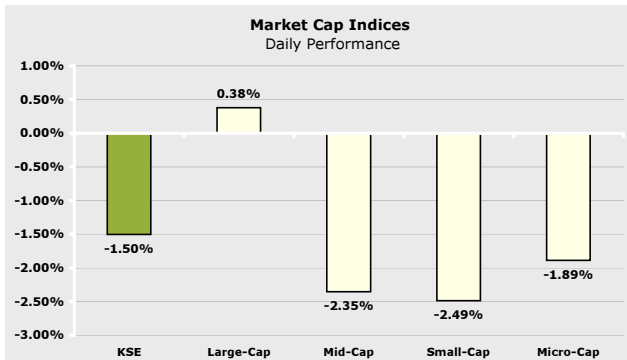
Company	Price			Volume
	Last	Change	% Change	
DRIVE	6.35	0.55	9.48	500
GMPC	5.24	0.39	8.04	103,200
NBAD	12.10	0.60	5.21	158,574
BILDCO	3.65	0.15	4.28	793,640
RAKWCT	1.66	0.06	3.75	366,922

Company	Price			Volume
	Last	Change	% Change	
AABAR	2.93	-0.37	-11.21	6,781,489
ADAVIATION	2.51	-0.30	-10.67	105,000
FH	10.55	-1.20	-10.21	2,187
ADNH	4.82	-0.53	-9.90	14,512
UNION	4.20	-0.46	-9.87	149,687

Company News

Kuwait Stock Exchange

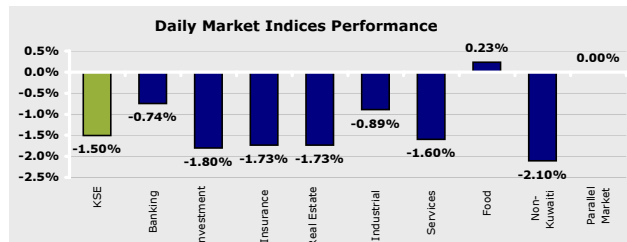
October 16, 2008



Index *	Last	Change (%)		
		Day	Week	YTD
Large-Cap	5,410.63	0.38	4.07	-18.76
Mid-Cap	3,846.37	-2.35	0.12	-17.25
Small -Cap	5,483.81	-2.49	-8.15	-26.21
Micro-Cap	5,425.85	-1.89	-4.32	-24.67

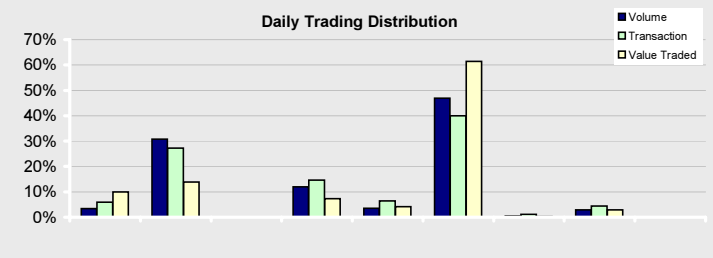
Company	Price	Change (%)	Market Cap (KD Mil)	P/E	P/B
ZAIN	1,400	7.69	5,852	18.32	3.82
NBK	1,740	-2.25	4,667	15.34	2.87
KFIN	2,240	0.00	4,611	14.59	3.69
CBK	1,240	-1.59	1,559	12.00	3.28
ABK	1,060	0.00	1,392	17.35	4.24
NIND	830	-2.35	1,283	7.50	1.29
GBK	1,020	2.00	1,255	10.81	2.82
KPROJ	900	-1.10	1,005	5.88	1.59
AGLTY	930	-1.06	973	6.65	1.38
NMTC	1,920	1.05	962	12.09	2.90

* Base date is 01/01/1999, Value = 1,000



KSE	16/10/2008	15/10/2008	Change (%)	50-day Average	Change (%)
Trading Vol. (million)	568.33	426.30	33.32	254.60	123.23
Transactions	10,991	10,578	3.90	6,750	62.84
Value Traded (KD Million)	307.48	227.45	35.19	128	140.25

Index	Last	Change (%)		
		Day	Week	YTD
KSE	11,543.70	-1.50	-3.04	-8.08
Banking	12,730.50	-0.74	-1.10	-11.99
Investment	12,744.30	-1.80	-6.28	-20.20
Insurance	3,442.30	-1.73	-4.86	0.02
Real Estate	5,583.60	-1.73	-2.50	-4.35
Industrial	8,716.50	-0.89	3.12	5.54
Services	20,651.60	-1.60	-4.82	-2.82
Food	4,990.10	0.23	3.05	-24.41
Non-Kuwaiti	10,584.80	-2.10	-2.67	-3.35
Parallel Market	1,315.70	0.00	-4.19	5.37



Company	Volume		Price	
	Shares	Market %	Last	% Change
ZAIN	86,257,500	15.18	1400	7.69
ALSAFWA	77,360,000	13.61	100	-3.84
ALSAFAT	55,440,000	9.75	260	0.00
AGLTY	41,525,000	7.31	930	-1.06
EKTTITAB	30,680,000	5.40	102	-5.55

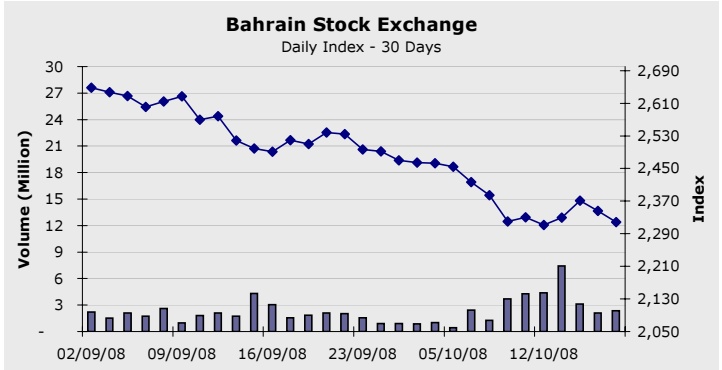
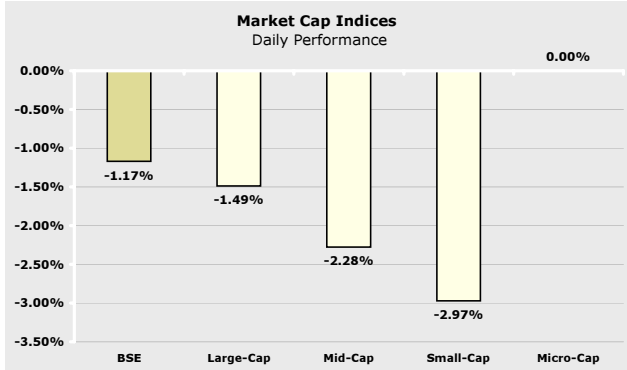
Company News

Company	Price			Volume
	Last	Change	% Change	
ZAIN	1400	100.00	7.69	86,257,500
ALDEERA	380	25.00	7.04	10,000
UGB.KW	460	20.00	4.54	160,000
INJAZZAT	350	15.00	4.47	8,720,000
NIH	285	10.00	3.63	30,000

Company	Price			Volume
	Last	Change	% Change	
IIG	100	-10.00	-9.09	1,740,000
MREC	114	-10.00	-8.06	160,000
FTI	295	-25.00	-7.81	10,000
FIRSTDUBAI	300	-25.00	-7.69	10,000
EKHOLDING	500	-40.00	-7.40	20,000

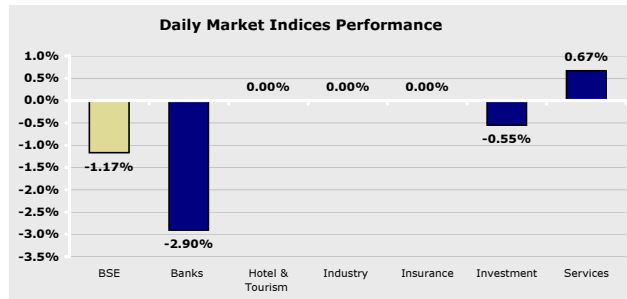
Bahrain Stock Exchange

October 16, 2008



Index *	Last	Change (%)		
		Day	Week	YTD
Large-Cap	1,247.03	-1.49	0.56	-29.65
Mid-Cap	6,622.14	-2.28	-3.70	-9.53
Small -Cap	1,857.07	-2.97	3.39	-11.12
Micro-Cap	2,286.29	0.00	-0.25	-11.31

* Base date is 01/01/1999, Value = 1,000



Company	Price	Change (%)	Market Cap (BHD Mil)	P/E	P/B
QTEL.BSE	22.93	0.00	2,522	14.09	3.18
GLOBAL.BSE	1.45	0.00	1,799	14.10	3.99
AUB	0.32	-5.56	1,431	10.72	1.65
BATELCO	0.63	0.96	907	9.06	2.11
BMUSC	0.82	0.00	754	8.22	1.25
GFH	0.95	0.80	752	4.86	2.23
BARKA	1.08	0.00	751	18.56	1.74
ABC	0.34	0.00	688	N/M	0.85
INVCORP	840.83	0.00	673	11.92	1.45
NBB	0.74	0.00	575	12.91	2.42

Index	Last	Change (%)		
		Day	Week	YTD
BSE	2,318.64	-1.17	-0.51	-15.85
Banks	2,861.24	-2.90	-3.06	-17.76
Hotel & Tourism	2,818.38	0.00	-1.98	21.74
Industry	1,376.77	0.00	0.00	-4.29
Insurance	2,349.01	0.00	0.00	1.43
Investment	2,151.37	-0.55	2.05	-15.52
Services	1,703.45	0.67	-2.71	-16.14

BASI	16/10/2008	15/10/2008	Change (%)	50-day Average	Change (%)
Trading Vol. (million)	2.36	2.09	12.97	2.55	-7.47
Transactions	99	180	-45.00	145	-31.71
Value Traded (BHD Million)	0.51	0.85	-40.17	1.19	-57.32

Company	Volume		Price	
	Shares	Market %	Last	% Change
SALAM	1,607,580	68.20	0.18	0.00
ITHMR	504,904	21.42	0.51	-3.77
AUB	113,874	4.83	0.85	-5.55
TAMEERK	39,303	1.67	1.84	-8.00
BISB	35,000	1.48	0.48	-3.03



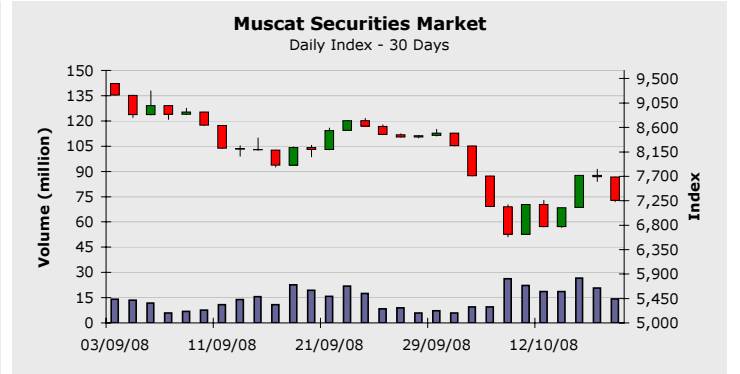
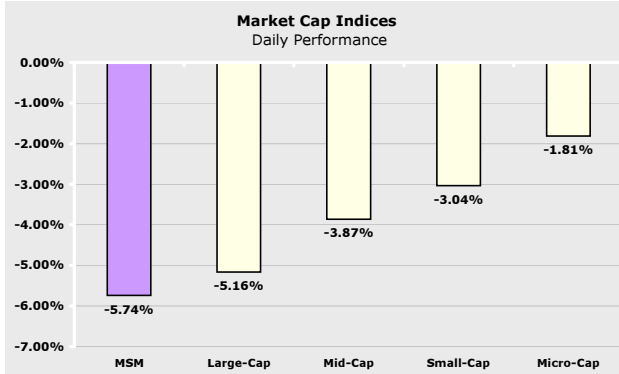
Company	Price			Volume
	Last	Change	% Change	
BATELCO	0.63	0.01	0.96	24,389
GFH	2.53	0.02	0.79	14,230

Company	Price			Volume
	Last	Change	% Change	
TAMEERK	1.84	-0.16	-8.00	39,303
AUB	0.85	-0.05	-5.55	113,874
ITHMR	0.51	-0.02	-3.77	504,904
BISB	0.48	-0.02	-3.03	35,000

Company News

Muscat Securities Market

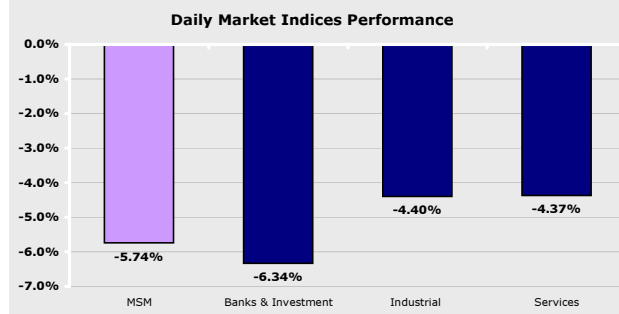
October 16, 2008



Index *	Last	Change (%)		
		Day	Week	YTD
Large-Cap	2,328.15	-5.16	-0.70	-25.47
Mid-Cap	4,011.72	-3.87	0.91	-6.42
Small -Cap	6,405.13	-3.04	-2.30	-4.41
Micro-Cap	9,189.71	-1.81	1.37	0.40

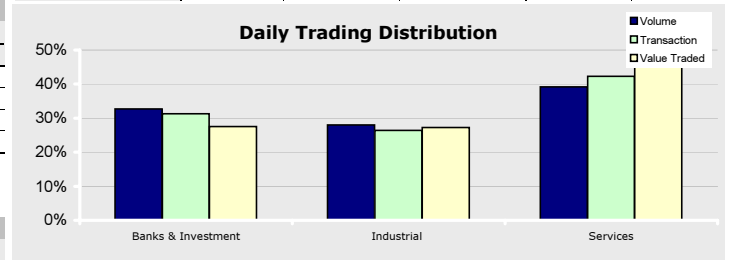
Company	Price	Change (%)	Market Cap (RO Mil)	P/E	P/B
OTEL	1.85	-5.08	1,388	10.03	4.14
BKMB	1.02	-6.51	1,098	10.77	1.54
NBOB	0.45	-2.63	481	10.02	1.98
RCCI	1.60	-5.88	320	8.40	3.50
OIBB	0.30	-5.66	274	9.01	1.69
BKDB	0.51	-3.95	271	9.50	2.40
GECS	1.18	-1.67	248	9.85	3.41
RNSS	0.91	-7.18	222	9.32	1.91
SOMS	1.98	-0.50	198	16.22	9.62
BKSB	0.20	-1.52	195	150.00-	1.98

* Base date is 01/01/1999, Value = 1,000



MSM	16/10/2008	15/10/2008	Change (%)	50-day Average	Change (%)
Trading Vol. (million)	14.20	20.74	-31.51	13.26	7.12
Transactions	3,661	4,881	-24.99	3,616	1.25
Value Traded (RO Million)	6.41	10.77	-40.48	11.03	-41.90

Index	Last	Change (%)		
		Day	Week	YTD
MSM	7,248.76	-5.74	0.98	-19.77
Banks & Inv.	9,175.35	-6.34	-0.42	-25.48
Industrial	7,061.34	-4.40	0.76	-13.22
Services & Ins.	3,332.96	-4.37	-0.74	-5.67



Company	Volume		Price	
	Shares	Market %	Last	% Change
AJSS	3,277,388	23.07	0.16	-4.09
AAIT	1,074,674	7.57	0.27	-6.36
CMII	956,852	6.74	0.13	-3.07
OCOI	915,567	6.45	0.39	-7.81
BKMB	764,159	5.38	1.02	-6.51

Company News

National Aluminium Products Co.
Net profit announced for the 9 months ended 30/09/2008, RO 1.113 million, an increase of 50.2%.

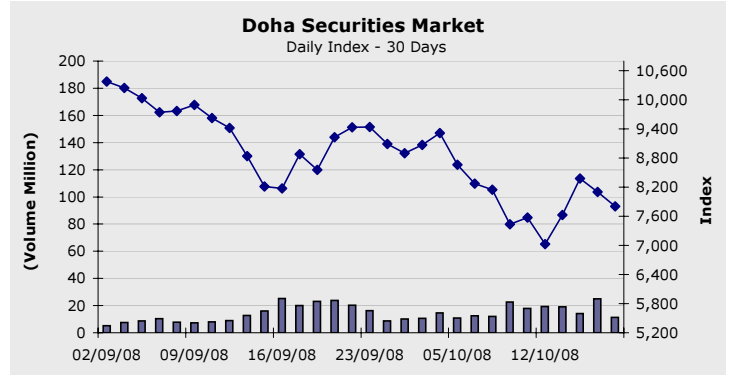
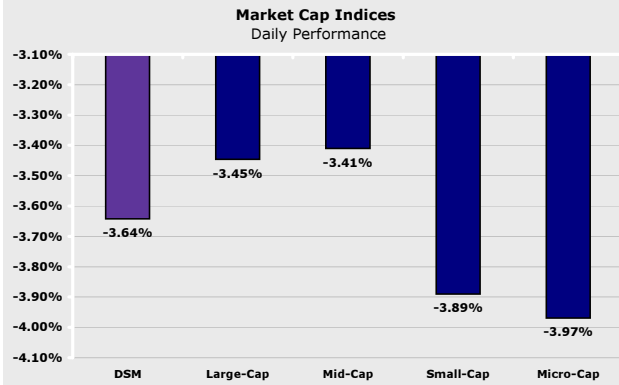
Company	Price			Volume
	Last	Change	% Change	
OCCI	2.20	0.22	11.06	10
GFIC	0.17	0.01	3.72	513,177
OFCI	0.11	0.00	1.88	331,371
OFMI	3.18	0.03	0.92	10,954
NAPI	0.40	0.00	0.75	85,131

National Securities Co.
Net loss announced for the 6 months ended 30/09/2008, RO 252.1 thousand.

Company	Price			Volume
	Last	Change	% Change	
ONIC	0.62	-0.07	-10.28	61,957
MGCI	0.50	-0.06	-10.00	1,000
DHPS	1.65	-0.18	-9.99	569
GISI	0.19	-0.02	-8.61	39,000
OCOI	0.39	-0.03	-7.81	915,567

Doha Securities Market

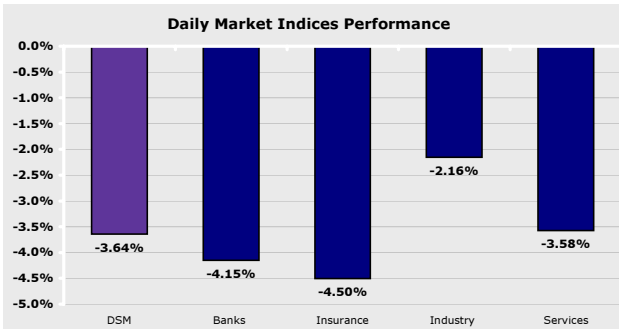
October 16, 2008



Index *	Last	Change (%)		
		Day	Week	YTD
Large-Cap	4,134.08	-3.45	1.99	-17.77
Mid-Cap	9,176.27	-3.41	-3.93	-17.63
Small -Cap	7,695.71	-3.89	-2.54	-16.62
Micro-Cap	3,720.18	-3.97	-4.41	-17.92

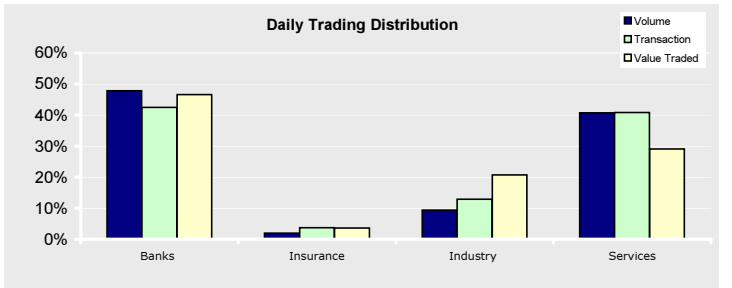
Company	Price	Change (%)	Market Cap (QAR Mil)	P/E	P/B
IQCD	126.00	0.24	69,300	9.20	4.24
QNBK	159.50	-3.22	38,423	12.16	2.02
AHCS	72.00	-9.09	27,324	27.92	6.59
ERES	50.00	0.40	22,845	26.89	4.12
QIBK	106.00	-2.84	20,873	12.99	3.17
QTEL	128.70	-2.20	18,876	10.95	2.48
CBQK	82.40	-10.43	16,991	9.41	2.29
QGTS	26.50	-1.49	14,840	90.04	3.17
BRES	47.50	-2.86	12,469	20.54	2.64
MARK	15.70	-1.88	11,775	15.17	2.34

* Base date is 01/01/1999, Value = 1,000



	16/10/2008	15/10/2008	Change (%)	50-day Average	Change (%)
Trading Vol. (million)	11.25	24.86	-54.75	11.89	-5.38
Transactions	7,392	12,528	-41.00	7,010	5.45
Value Traded (QAR Million)	451.48	1,097.39	-58.86	611.40	-26.16

Index	Last	Change (%)		
		Day	Week	YTD
DSM	7,803.97	-3.64	3.04	-18.54
Banks	11,155.92	-4.15	1.81	60.03
Insurance	6,823.89	-4.50	-4.32	-38.15
Industry	7,764.16	-2.16	9.17	-11.15
Services	5,582.26	-3.58	2.01	-24.88



Company	Volume		Price	
	Shares	Market %	Last	% Change
MARK	3,055,143	27.16	15.70	-1.87
QGTS	1,695,750	15.08	26.50	-1.48
GISS	862,876	7.67	28.50	-1.04
QIBK	671,203	5.97	106.00	-2.84
IQCD	635,595	5.65	126.00	0.23

Company	Price			Volume
	Last	Change	% Change	
ERES	50.00	0.20	0.40	5,400
IQCD	126.00	0.30	0.23	635,595

Company	Price			Volume
	Last	Change	% Change	
CBQK	82.40	-9.60	-10.43	500,518
QATI	114.90	-12.50	-9.81	93,187
DOHI	27.70	-3.00	-9.77	62,206
ABQK	52.30	-5.40	-9.35	14,506
AHCS	72.00	-7.20	-9.09	13,142

Company News

Qatar National Bank

Net profit announced for the 9 months ended 30/09/2008, QR 3 billion, an increase of 61.9%.

Dlala' Brokerage & Investment Holding Co.

Net profit announced for the 9 months ended 30/09/2008, QR 49.2 million, an increase of 270%.

National Leasing Holding Co.

Net profit announced for the 9 months ended 30/09/2008, QR 46 million, an increase of 22.7%.

Disclaimer:

All rights reserved. Any unauthorized use or disclosure is prohibited. This report has been prepared and issued by Zughhaibi & Kabbani Financial Consultants. The information herein was obtained from various sources; we do not guarantee its accuracy or completeness. Neither the information nor any opinion expressed constitutes an offer, or an invitation to make an offer, to buy or sell any securities or any options, futures or other derivatives related to such securities ("related investments"). ZKFC may from time to time perform investment advisory or other services. This research report is prepared for general circulation and is circulated for general information only. It does not have regard to the specific investment objectives, financial situation and the particular needs of any specific person who may receive this report. Investors should seek financial advice regarding the appropriateness of investing in any securities or investment strategies discussed or recommended in this report and should understand that statements regarding future prospects may not be realized. Investors should note that income from such securities, if any, may fluctuate and that each security's price or value may rise or fall. Accordingly, investors may receive back less than originally invested. Past performance is not necessarily a guide to future performance. Foreign currency rates of exchange may adversely affect the value, price or income of any security or related investment mentioned in this report.