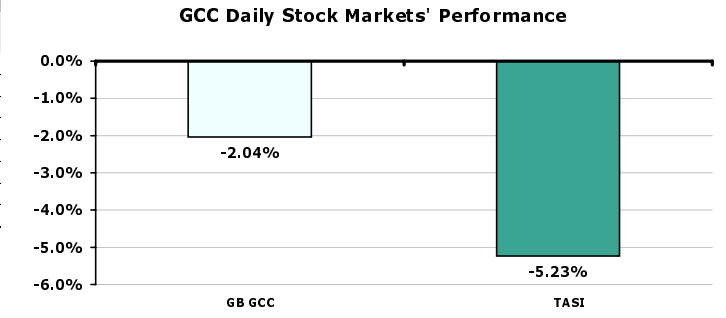


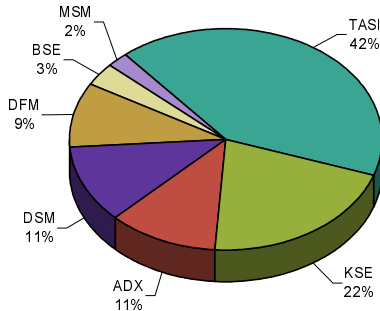
GCC Stock Markets

October 18, 2008

GCC Stock Market Indices				
Index	Last	Change	Change (%)	Volume (Million)
GB GCC	4,709.61	-97.98	-2.04	267.67
Saudi (TASI)	6,503.94	-359.21	-5.23	267.67
Dubai (DFM)	3,204.11	0.00	0.00	0.00
Abu Dhabi (ADX)	3,366.72	0.00	0.00	0.00
Kuwait (KSE)	11,543.70	0.00	0.00	0.00
Bahrain (BSE)	2,318.64	0.00	0.00	0.00
Oman (MSM)	7,248.76	0.00	0.00	0.00
Qatar (DSM)	7,803.97	0.00	0.00	0.00



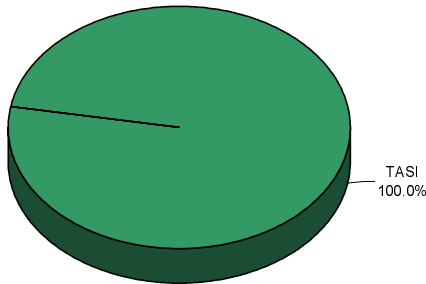
Daily Market Cap Review



Advancers & Decliners

Market	Traded stocks	Advancers	Decliners	No change
Saudi Stock Market	125	15	101	9
Dubai Financial Market	Close	0	0	0
Abu Dhabi Securities Exchange	Close	0	0	0
Kuwait Stock Exchange	Close	0	0	0
Bahrain Stock Exchange	Close	0	0	0
Muscat Securities Market	Close	0	0	0
Doha Securities Market	Close	0	0	0

Daily Volume Distribution

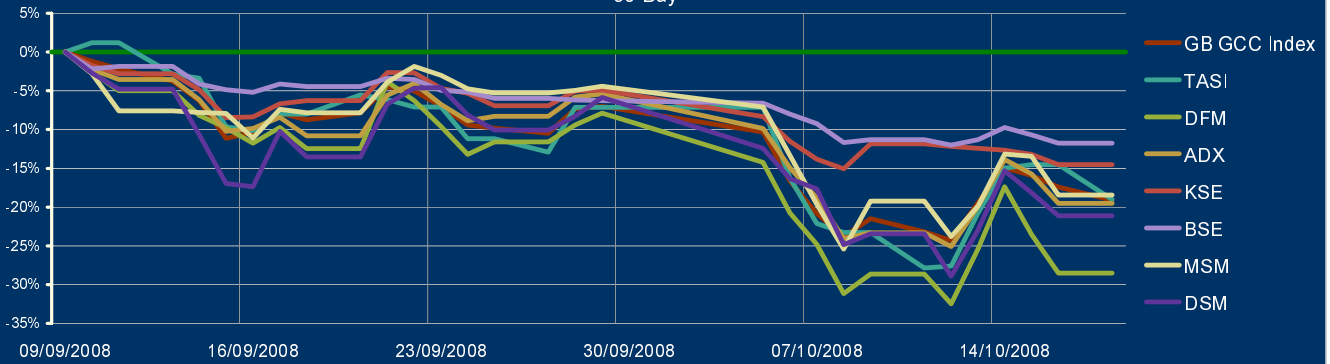


GulfBase GCC Indices

Index	Last	Change (%)		
		Day	Week	YTD
GCC General Index	4,709.61	-2.04	5.34	-32.74
GCC Large-Cap	4,642.15	-2.08	6.90	-34.09
GCC Med-Cap	3,940.07	-1.87	2.46	-27.50
GCC Small-Cap	5,499.85	-2.37	0.37	-33.17
GCC Micro-Cap	5,842.13	-1.05	2.01	-33.94
Cement	3,945.78	-2.06	1.45	-33.69
Commercial Srv & Supplies	4,812.08	-0.04	7.39	-26.86
Commercial Banks	5,103.96	-1.39	4.64	-30.76
Consumer Discretionary	2,535.47	-1.83	-0.23	-28.41
Consumer Staple	3,413.48	-2.79	10.18	-30.75
Energy	1,938.25	-0.42	3.26	-21.09
Financial Srv	2,591.36	0.00	-1.19	-27.25
Health Care	2,597.03	-0.80	6.33	-33.06
Industrial	5,394.53	-2.19	6.48	-28.81
Insurance	1,918.53	-0.88	-6.17	-50.22
Basic Material	8,046.39	-7.78	11.91	-38.08
Multi-Sector Holding	3,173.79	-0.94	2.88	-44.14
Real Estate	3,341.07	-0.75	0.62	-44.21
Telecom	4,415.72	-0.49	12.53	-28.62
Transport	1,890.02	-0.36	1.64	-35.25
Utilities	2,439.53	-0.49	3.06	-38.86

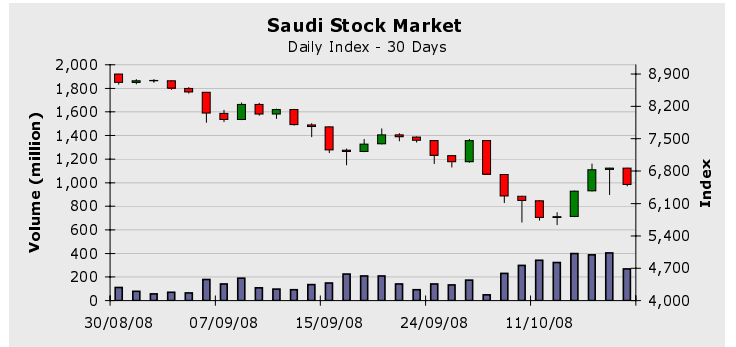
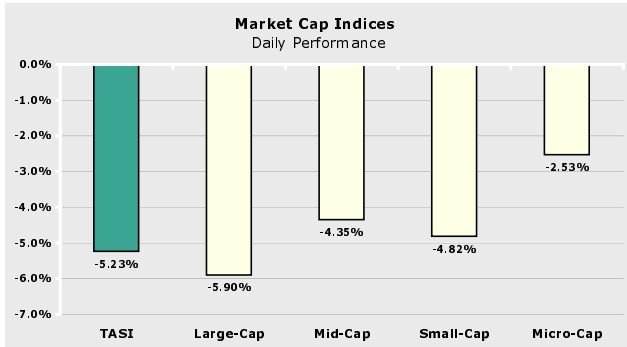
* Base date is 01/01/1999, Base Value = 1,000

GCC Stock Markets Performance 30-Day



Saudi Stock Market

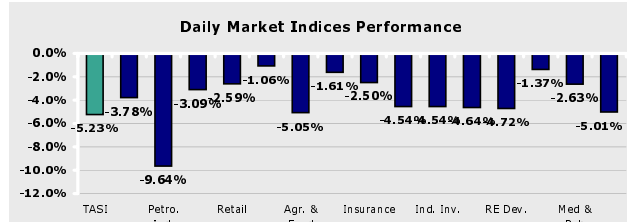
October 18, 2008



Index *	Last	Change (%)		
		Day	Week	YTD
Large-Cap	5,141.13	-5.90	16.35	-35.76
Mid-Cap	3,489.85	-4.35	7.34	-41.85
Small-Cap	3,512.92	-4.82	4.49	-42.52
Micro-Cap	5,389.70	-2.53	9.36	-54.98

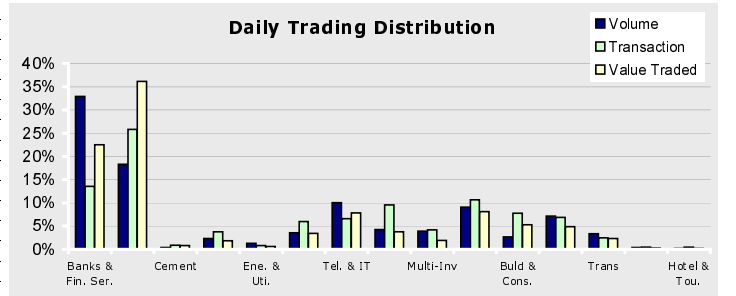
Company	Price	Change (%)	Market Cap (SR Mil)	P/E	P/B
SABIC	95.00	-9.95	285,000	9.92	2.83
STC	62.75	-3.09	125,500	9.60	3.28
RJHI	77.75	-6.89	116,625	17.63	4.89
SAMBA	80.00	-3.03	72,000	15.37	4.01
SECO	10.05	-0.99	41,874	34.55	0.88
SAFCO	158.75	-9.93	39,688	12.12	5.25
RIBL	26.00	-7.14	39,000	12.56	1.52
SABB	65.00	4.42	39,000	13.41	3.57
KINGDOM	6.00	-4.00	37,800	28.63	0.96
BSFR	60.00	-2.83	33,750	12.05	2.72

* Base date is 01/01/1999, Value = 1,000



TASI	18/10/2008	15/10/2008	Change (%)	50-days average	Change (%)
Trading Vol. (million)	267.67	403.69	-33.69	163.74	63.47
Transactions	180,243	231,763	-22.23	156,334	15.29
Value Traded (SR Million)	6,738.18	10,285.90	-34.49	5,014	34.37

Index	Last	Change (%)		
		Day	Week	YTD
TASI	6,503.94	-5.23	12.24	-41.08
Banks & Fin. Ser.	18,286.79	-3.78	16.14	-40.13
Petro. Ind.	5,508.59	-9.64	12.84	-41.83
Cement	4,108.91	-3.09	3.55	-43.27
Retail	3,518.85	-2.59	11.86	-35.84
Ene. & Uti.	3,710.63	-1.06	2.70	-33.90
Agr. & Food	3,785.03	-5.05	12.09	-33.98
Tel. & IT	1,985.84	-1.61	12.79	-40.53
Insurance	712.72	-2.50	2.09	-69.21
Multi-Inv	2,327.52	-4.54	5.14	-62.59
Ind. Inv.	4,270.28	-4.54	4.43	-30.62
Buld & Cons.	4,865.03	-4.64	6.88	-29.19
RE Dev.	3,709.48	-4.72	8.29	-44.74
Trans	3,165.29	-1.37	9.45	-41.26
Med & Pub	1,910.62	-2.63	2.03	-52.02
Hotel & Tou.	4,413.19	-5.01	4.62	-28.76



Company	Volume		Price	
	Shares	Market %	Last	% Change
ALINMA	79,929,983	29.86	13.25	-2.93
ZAIN.TASI	23,805,029	8.89	15.05	-2.90
MAADEN	16,793,263	6.27	15.85	-4.51
SABIC	14,473,947	5.41	95.00	-9.95
EMAAR.TASI	8,905,119	3.33	12.65	-9.96

Company News

The Saudi Investment Bank
Net profit announced for the 9 months ended 30/09/2008, SR 603 million, a decrease of 31%.

Company	Last	Price		Volume
		Change	% Change	
THIMAR	15.00	1.20	8.69	570,439
TRADEUNION	12.90	0.65	5.30	398,327
SABB	65.00	2.75	4.41	83,785
HB	19.20	0.55	2.94	1,486,696
EEC	39.50	0.90	2.33	1,383,903

Saudi Hotels & Resort Areas Co.
Net profit announced for the 9 months ended 30/09/2008, SR 89.6 million, an increase of 107%.

Company	Last	Price		Volume
		Change	% Change	
ALCO	20.25	-2.25	-10.00	581,475
SPCO	20.70	-2.30	-10.00	914,268
YANSAB	22.50	-2.50	-10.00	3,518,796
SIIC	30.60	-3.40	-10.00	1,011,655
EMAAR.TASI	12.65	-1.40	-9.96	8,905,119

Bank Al Jazira
Net profit announced for the 9 months ended 30/09/2008, SR 314 million, a decrease of 51%.

Saudi International Petrochemical Co.
Net profit announced for the 9 months ended 30/09/2008, SR 502 million, an increase of 48%.

Disclaimer:

All rights reserved. Any unauthorized use or disclosure is prohibited. This report has been prepared and issued by Zughaihi & Kabbani Financial Consultants. The information herein was obtained from various sources; we do not guarantee its accuracy or completeness. Neither the information nor any opinion expressed constitutes an offer, or an invitation to make an offer, to buy or sell any securities or any options, futures or other derivatives related to such securities ("related investments"). ZKFC may from time to time perform investment advisory or other services. This research report is prepared for general circulation and is circulated for general information only. It does not have regard to the specific investment objectives, financial situation and the particular needs of any specific person who may receive this report. Investors should seek financial advice regarding the appropriateness of investing in any securities or investment strategies discussed or recommended in this report and should understand that statements regarding future prospects may not be realized. Investors should note that income from such securities, if any, may fluctuate and that each security's price or value may rise or fall. Accordingly, investors may receive back less than originally invested. Past performance is not necessarily a guide to future performance. Foreign currency rates of exchange may adversely affect the value, price or income of any security or related investment mentioned in this report.