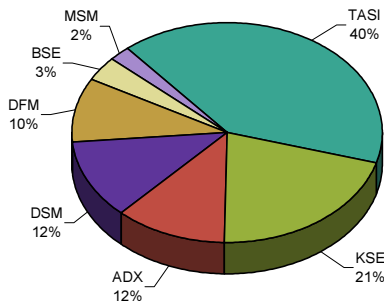


**GCC Stock Markets**

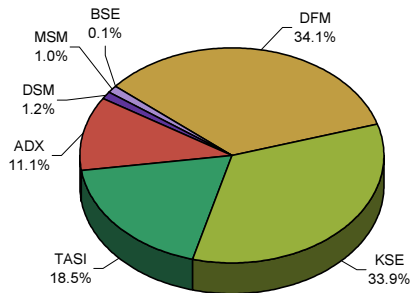
October 19, 2008

GCC Stock Market Indices				
Index	Last	Change	Change (%)	Volume (Million)
<b>GB GCC</b>	<b>4,618.05</b>	<b>-91.56</b>	<b>-1.94</b>	<b>981.70</b>
Saudi (TASI)	6,258.32	-245.62	-3.78	181.57
Dubai (DFM)	3,215.94	11.83	0.37	335.18
Abu Dhabi (ADX)	3,446.76	80.04	2.38	109.24
Kuwait (KSE)	11,234.10	-309.60	-2.68	333.18
Bahrain (BSE)	2,328.85	10.21	0.44	0.89
Oman (MSM)	7,223.07	-25.69	-0.35	10.22
Qatar (DSM)	7,901.62	97.65	1.25	11.41

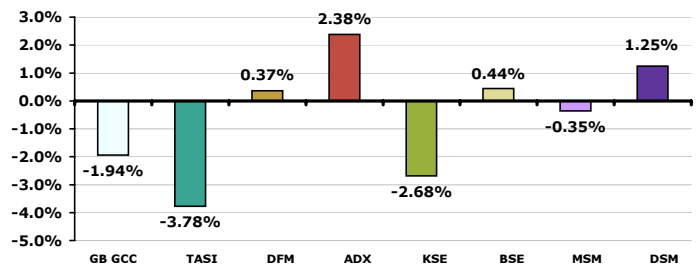
**Daily Market Cap Review**



**Daily Volume Distribution**



**GCC Daily Stock Markets' Performance**



**Advancers & Decliners**

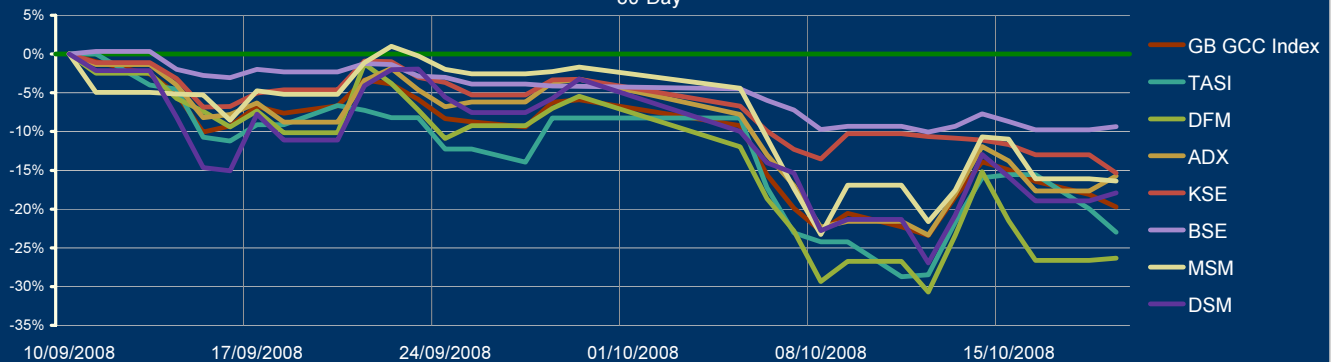
Market	Traded stocks	Advancers	Decliners	No change
Saudi Stock Market	126	35	86	5
Dubai Financial Market	29	16	11	2
Abu Dhabi Securities Exchange	37	16	17	4
Kuwait Stock Exchange	152	21	112	19
Bahrain Stock Exchange	14	3	7	4
Muscat Securities Market	42	16	24	2
Doha Securities Market	41	20	16	5

**GulfBase GCC Indices**

Index	Last	Change (%)		
		Day	Week	YTD
GCC General Index	4,618.05	-1.94	4.81	-34.05
GCC Large-Cap	4,543.14	-2.13	4.80	-35.49
GCC Med-Cap	3,880.98	-1.50	4.43	-28.58
GCC Small-Cap	5,342.38	-2.86	2.34	-35.09
GCC Micro-Cap	5,767.41	-1.28	4.49	-34.79
Cement	3,848.26	-2.47	2.46	-35.33
Commercial Srv & Supplies	4,628.48	-3.82	2.94	-29.65
Commercial Banks	5,081.76	-0.44	5.97	-31.06
Consumer Discretionary	2,532.30	-0.13	1.12	-28.50
Consumer Staple	3,369.26	-1.30	11.31	-31.64
Energy	1,929.53	-0.45	9.60	-21.44
Financial Srv	2,530.35	-2.35	-0.48	-28.97
Health Care	2,536.25	-2.34	8.99	-34.63
Industrial	5,168.04	-4.20	3.92	-31.80
Insurance	1,866.57	-2.71	-2.68	-51.57
Basic Material	7,544.72	-6.23	2.24	-41.94
Multi-Sector Holding	3,043.66	-4.10	1.24	-46.43
Real Estate	3,298.57	-1.27	3.93	-44.92
Telecom	4,321.03	-2.14	7.55	-30.15
Transport	1,861.39	-1.51	8.77	-36.23
Utilities	2,464.68	1.03	10.63	-38.23

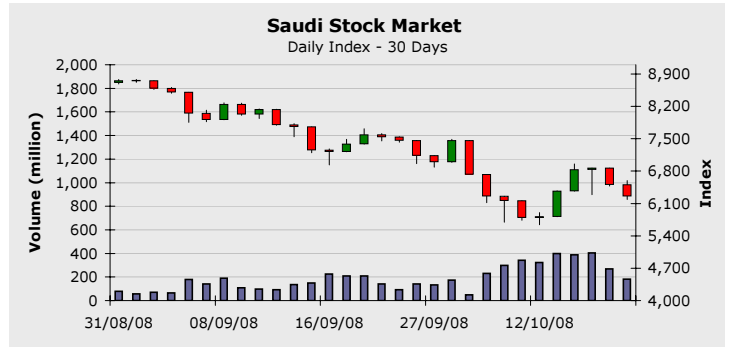
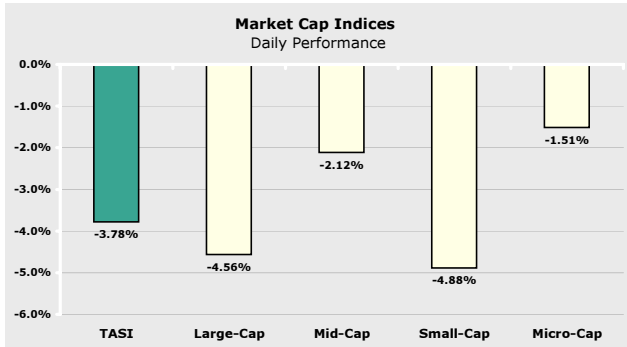
\* Base date is 01/01/1999, Base Value = 1,000

**GCC Stock Markets Performance 30-Day**



**Saudi Stock Market**

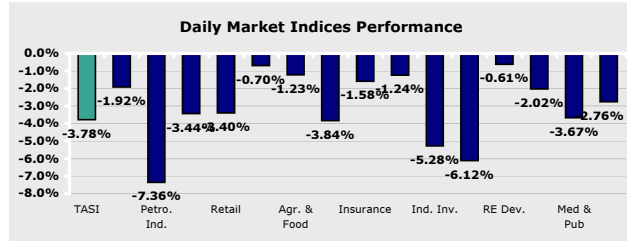
**October 19, 2008**



Index *	Last	Change (%)		
		Day	Week	YTD
Large-Cap	4,906.66	-4.56	7.96	-38.69
Mid-Cap	3,416.03	-2.12	7.59	-43.08
Small-Cap	3,341.39	-4.88	4.28	-45.33
Micro-Cap	5,308.15	-1.51	9.60	-55.67

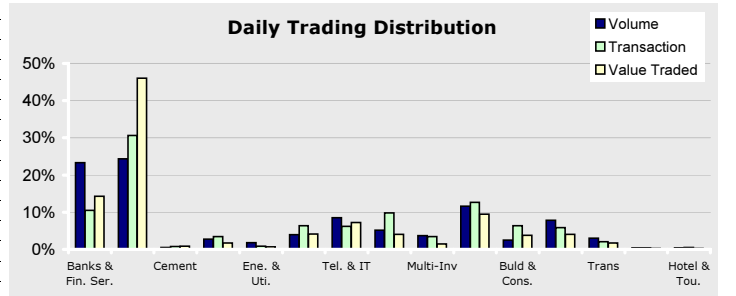
Company	Price	Change (%)	Market Cap (SR Mil)	P/E	P/B
SABIC	86.75	-8.68	260,250	9.06	2.59
STC	60.00	-4.38	120,000	9.18	3.14
RJHI	76.25	-1.93	114,375	17.29	4.80
SAMBA	79.50	-0.63	71,550	15.27	3.99
SECO	10.00	-0.50	41,666	34.38	0.88
RIBL	25.90	-0.38	38,850	12.51	1.52
SABB	64.25	-1.15	38,550	13.26	3.53
KINGDOM	5.95	-0.83	37,485	28.39	0.95
SAFCO	143.00	-9.92	35,750	10.92	4.72
BSFR	56.00	-6.67	31,500	11.25	2.54

\* Base date is 01/01/1999, Value = 1,000



TASI	19/10/2008	18/10/2008	Change (%)	50-days average	Change (%)
Trading Vol. (million)	181.57	267.67	-32.17	164.06	10.67
Transactions	157,916	180,243	-12.39	155,477	1.57
Value Traded (SR Million)	5,393.63	6,738.18	-19.95	5,005	7.76

Index	Last	Change (%)		
		Day	Week	YTD
TASI	6,258.32	-3.78	7.63	-43.31
Banks & Fin. Ser.	17,935.23	-1.92	13.62	-41.28
Petro. Ind.	5,103.02	-7.36	0.53	-46.12
Cement	3,967.46	-3.44	1.97	-45.22
Retail	3,399.26	-3.40	14.14	-38.02
Ene. & Uti.	3,684.75	-0.70	4.21	-34.37
Agr. & Food	3,738.55	-1.23	16.09	-34.79
Tel. & IT	1,909.60	-3.84	6.79	-42.81
Insurance	701.45	-1.58	4.72	-69.70
Multi-Inv	2,298.68	-1.24	7.04	-63.06
Ind. Inv.	4,044.91	-5.28	-1.66	-34.28
Buld & Cons.	4,567.45	-6.12	8.20	-33.52
RE Dev.	3,686.77	-0.61	10.55	-45.08
Trans	3,101.25	-2.02	13.10	-42.45
Med & Pub	1,840.47	-3.67	3.69	-53.78
Hotel & Tou.	4,291.46	-2.76	1.57	-30.72



Company	Volume		Price	
	Shares	Market %	Last	% Change
ALINMA	36,934,205	20.34	13.45	1.50
SABIC	15,865,546	8.74	86.75	-8.68
ZAIN.TASI	11,459,748	6.31	14.65	-2.65
MAADEN	11,092,197	6.11	15.00	-5.36
EMAAR.TASI	8,935,531	4.92	12.10	-4.34

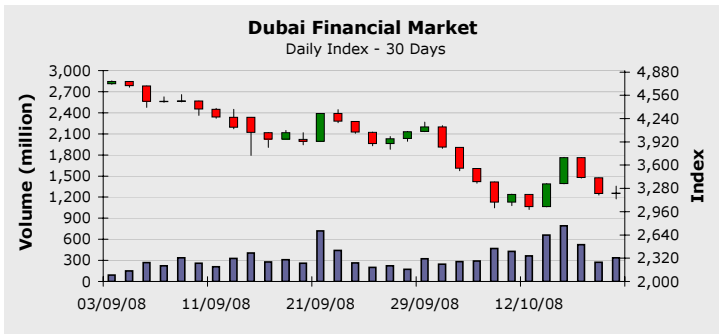
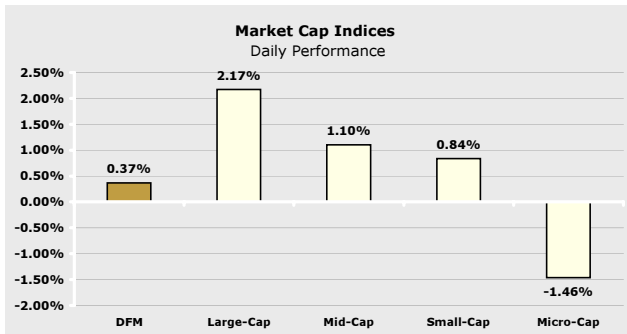
**Company News**

Company	Price			Volume
	Last	Change	% Change	
TRADEUNION	14.15	1.25	9.68	579,440
ALLIANZSF	32.90	1.90	6.12	174,917
SAGRINSURANCE	12.20	0.60	5.17	797,914
WALAA	13.55	0.55	4.23	238,318
AL-AHLIA	24.00	0.95	4.12	234,167

Company	Price			Volume
	Last	Change	% Change	
SCCO	28.00	-3.10	-9.96	4,239,096
NMMCC	38.00	-4.20	-9.95	3,004,604
SAFCO	143.00	-15.75	-9.92	3,691,359
ALCO	18.25	-2.00	-9.87	525,638
APC	59.50	-6.50	-9.84	291,194

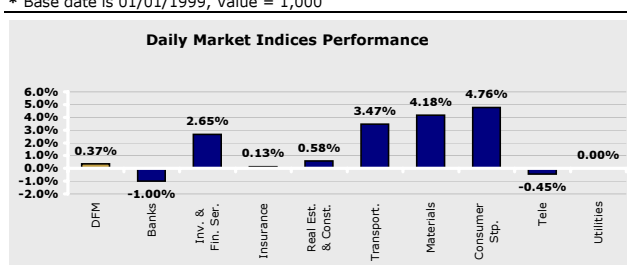
**Dubai Financial Market**

October 19, 2008



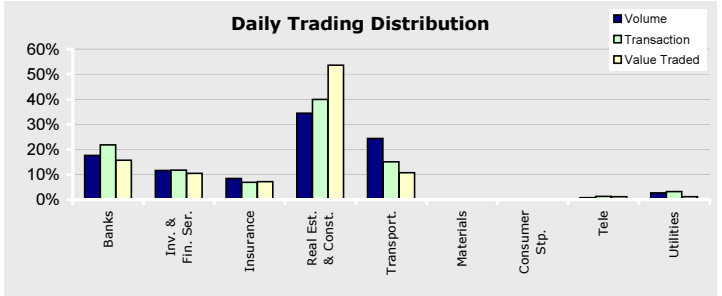
Index *	Last	Change (%)		
		Day	Week	YTD
Large-Cap	2,336.45	2.17	9.10	-46.25
Mid-Cap	3,525.95	1.10	5.44	-23.20
Small -Cap	3,622.36	0.84	6.48	-34.13
Micro-Cap	2,770.98	-1.46	4.42	2.59

Company	Price	Change (%)	Market Cap (AED Mil)	P/E	P/B
ENBD	7.00	-2.51	35,368	8.39	1.34
EMAAR	5.56	0.72	33,867	5.12	0.89
DFMC	2.60	2.36	20,659	16.51	2.20
DU	4.38	-0.45	17,520	35.47	7.30
DIB	4.90	-0.81	16,882	7.35	1.62
CBD	8.10	0.00	11,436	10.68	2.31
GGICO	7.98	8.57	8,618	10.82	2.77
DIC	2.22	2.30	7,396	4.25	1.09
DEYAAR	1.24	2.48	7,165	9.73	1.08
UPP	2.08	-1.89	6,366	6.73	1.10



DFM	19/10/2008	16/10/2008	Change (%)	50-day Average	Change (%)
Trading Vol. (million)	335.18	273.25	22.66	274.49	22.11
Transactions	11,506	9,368	22.82	8,889	29.44
Value Traded (AED Million)	943.43	811.36	16.28	1,019	-7.45

Index	Last	Change (%)		
		Day	Week	YTD
DFM	3,215.94	0.37	6.31	-45.79
Banks	2,086.79	-1.00	0.79	-38.89
Inv. & Fin. Services	4,806.15	2.65	15.90	-40.38
Insurance	3,822.88	0.13	2.17	-17.43
Real Estate & Const.	5,668.08	0.58	8.68	-58.57
Transportation	597.19	3.47	14.77	-36.16
Materials	328.15	4.18	-4.55	-5.81
Consumer Staples	396.00	4.76	10.00	-40.36
Telecommunication	708.74	-0.45	12.31	-40.89
Utilities	2,091.35	0.00	7.41	-63.55



Company	Volume		Price	
	Shares	Market %	Last	% Change
EMAAR	64,193,695	19.15	5.56	0.72
AIRARABIA	56,612,262	16.89	1.25	4.16
AJMANBANK	28,574,849	8.53	1.91	5.52
DEYAAR	27,524,128	8.21	1.24	2.47
GULFNAV	24,189,889	7.22	1.15	2.67

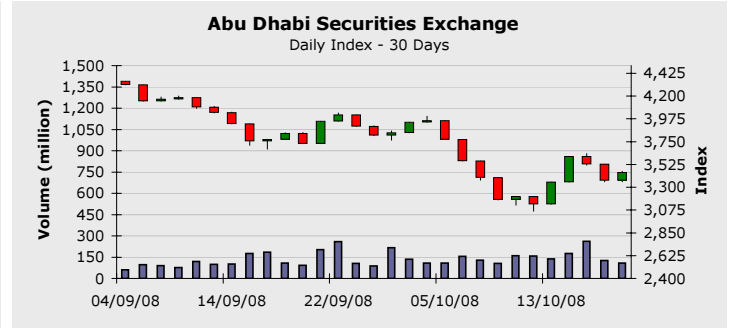
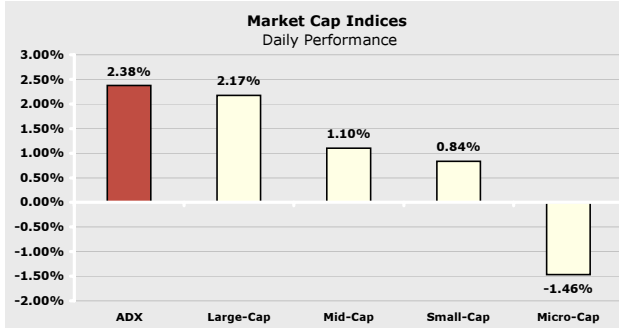
**Company New**

Company	Price			Volume
	Last	Change	% Change	
GGICO	7.98	0.63	8.57	103,200
AJMANBANK	1.91	0.10	5.52	28,574,849
JEEMA	3.96	0.18	4.76	1,318
ALFIRDIOUS	1.57	0.07	4.66	66,039
DARTAKAFUL	2.70	0.12	4.65	268,500

Company	Price			Volume
	Last	Change	% Change	
GRAND.DFM	1.65	-0.29	-14.94	33,060
SHUAA	2.91	-0.27	-8.49	1,558,591
ALMADINA.DFM	4.70	-0.26	-5.24	2,993
ENBD	7.00	-0.18	-2.50	909,388
UPP	2.08	-0.04	-1.88	13,788,410

**Abu Dhabi Securities Exchange**

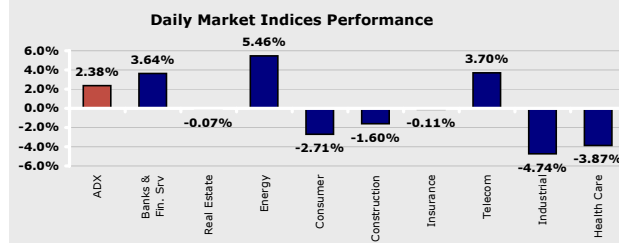
October 19, 2008



Index *	Last	Change (%)		
		Day	Week	YTD
Large-Cap	2,336.45	2.17	9.10	-46.25
Mid-Cap	3,525.95	1.10	5.44	-23.20
Small -Cap	3,622.36	0.84	6.48	-34.13
Micro-Cap	2,770.98	-1.46	4.42	2.59

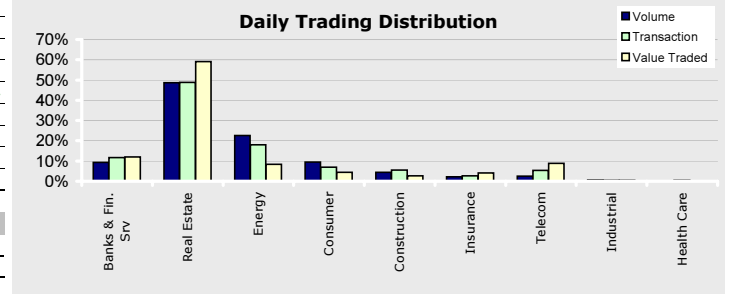
Company	Price	Change (%)	Market Cap (AED Mil)	P/E	P/B
ETISALAT	15.45	5.10	92,538	10.66	3.17
NBAD	12.75	5.37	25,202	7.89	1.84
FGB	11.70	10.38	16,088	6.16	1.42
ADCB	3.15	5.70	15,152	7.14	1.28
ALDAR	5.75	-4.01	14,801	4.07	0.97
SOROUH	4.80	-1.64	12,000	6.86	2.32
ARKAN.ADSM	5.75	-3.52	10,063	41.16	4.95
UNB	4.99	-0.20	9,356	6.73	1.33
ADIB	4.41	-4.13	8,690	9.22	1.58
TAQA	2.03	4.64	8,425	5.09	1.23

\* Base date is 01/01/1999, Value = 1,000



ADX	19/10/2008	16/10/2008	Change (%)	50-day Average	Change (%)
Trading Vol. (million)	109.24	125.53	-12.98	117.28	-6.85
Transactions	3,920	3,386	15.77	3,305	18.61
Value Traded (AED Million)	451.84	544.78	-17.06	628	-28.00

Index	Last	Change (%)		
		Day	Week	YTD
ADX	3,446.76	2.38	10.00	-24.28
Banks & Fin. Ser.	4,463.21	3.64	12.48	-25.81
Real Estate	791.13	-0.07	3.95	-48.15
Energy	236.77	5.46	14.98	-42.51
Consumer	1,711.79	-2.71	-3.97	-11.30
Construction	5,518.18	-1.60	2.95	7.04
Insurance	3,846.20	-0.11	-0.56	17.81
Telecommunication	2,626.76	3.70	14.07	-19.83
Industrial	2,484.39	-4.74	1.69	-11.25
Health Care	1,704.41	-3.87	17.48	7.28



Company	Volume		Price	
	Shares	Market %	Last	% Change
ALDAR	28,249,375	25.86	5.75	-4.00
DANA	19,920,012	18.23	1.12	1.81
SOROUH	18,731,621	17.15	4.80	-1.63
TAQA	8,186,674	7.49	2.03	4.63
RAKPROP	6,188,110	5.66	1.13	0.00

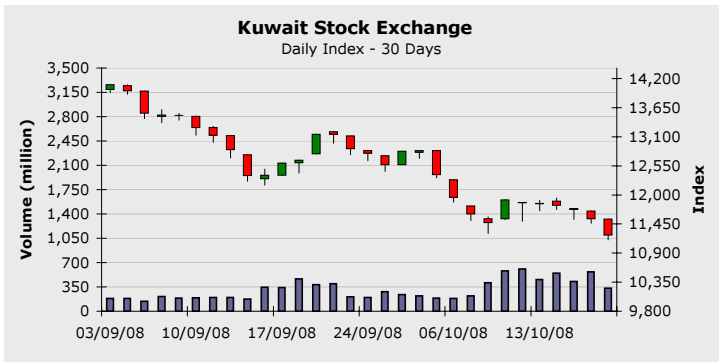
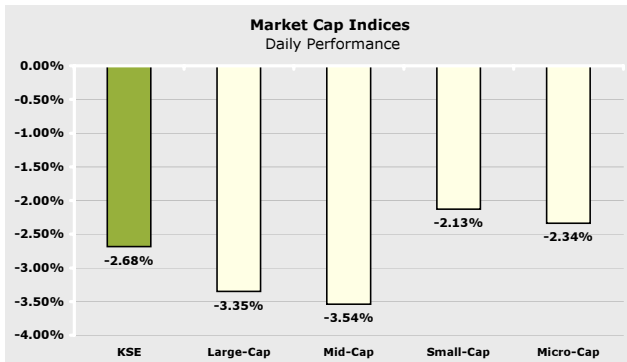
Company	Price			Volume
	Last	Change	% Change	
ADNH	5.39	0.57	11.82	90,390
FGB	11.70	1.10	10.37	1,803,720
FCI	5.54	0.47	9.27	20,000
QCEM.UAE	1.84	0.13	7.60	4,500
ADCB	3.15	0.17	5.70	2,770,736

Company	Price			Volume
	Last	Change	% Change	
GMPC	4.54	-0.70	-13.35	56,000
RAPCO	2.90	-0.30	-9.37	156,000
ADSB	4.41	-0.44	-9.07	8,340
RAKWCT	1.52	-0.14	-8.43	27,100
FODCO	3.00	-0.27	-8.25	7,051

**Company News**

**Kuwait Stock Exchange**

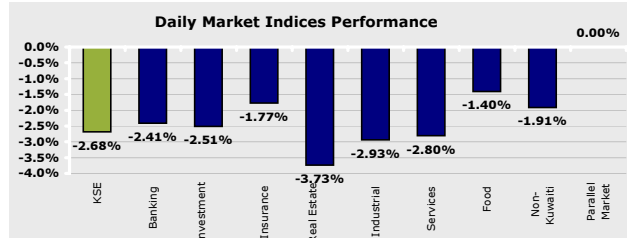
October 19, 2008



Index *	Last	Change (%)		
		Day	Week	YTD
Large-Cap	5,229.31	-3.35	-2.12	-21.48
Mid-Cap	3,710.23	-3.54	-3.84	-20.18
Small -Cap	5,367.22	-2.13	-8.59	-27.77
Micro-Cap	5,298.97	-2.34	-5.74	-26.43

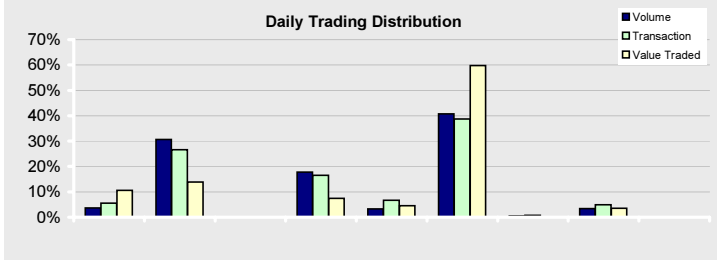
\* Base date is 01/01/1999, Value = 1,000

Company	Price	Change (%)	Market Cap (KD Mil)	P/E	P/B
ZAIN	1,300	-7.14	5,434	17.01	3.55
NBK	1,740	0.00	4,667	15.34	2.87
KFIN	2,160	-0.92	4,446	14.07	3.56
CBK	1,200	-3.23	1,508	11.61	3.17
ABK	1,020	-3.77	1,340	16.69	4.08
GBK	1,000	-5.66	1,230	10.60	2.77
NIND	770	-6.10	1,190	6.96	1.19
KPROJ	890	-1.11	994	5.81	1.57
NMTC	1,940	-2.02	972	12.22	2.93
AGLTY	900	-5.26	941	6.43	1.33



KSE	19/10/2008	16/10/2008	Change (%)	50-day Average	Change (%)
Trading Vol. (million)	333.18	568.33	-41.38	257.73	29.28
Transactions	7,165	10,991	-34.81	6,783	5.63
Value Traded (KD Million)	168.96	307.48	-45.05	130	30.18

Index	Last	Change (%)		
		Day	Week	YTD
KSE	11,234.10	-2.68	-5.26	-10.55
Banking	12,423.10	-2.41	-5.89	-14.12
Investment	12,424.60	-2.51	-7.04	-22.21
Insurance	3,381.30	-1.77	-8.64	-1.75
Real Estate	5,375.20	-3.73	-5.67	-7.92
Industrial	8,460.80	-2.93	-1.31	2.45
Services	20,072.50	-2.80	-6.00	-5.54
Food	4,920.00	-1.40	0.10	-25.48
Non-Kuwaiti	10,382.60	-1.91	-4.16	-5.19
Parallel Market	1,315.70	0.00	-3.97	5.37



Company	Volume		Price	
	Shares	Market %	Last	% Change
ZAIN	56,532,500	16.97	1300	-7.14
EKTTITAB	28,640,000	8.60	102	2.00
ALSAFAT	26,110,000	7.84	260	4.83
ALSAFWA	25,620,000	7.69	97	-2.02
NETWORK	21,020,000	6.31	295	3.50

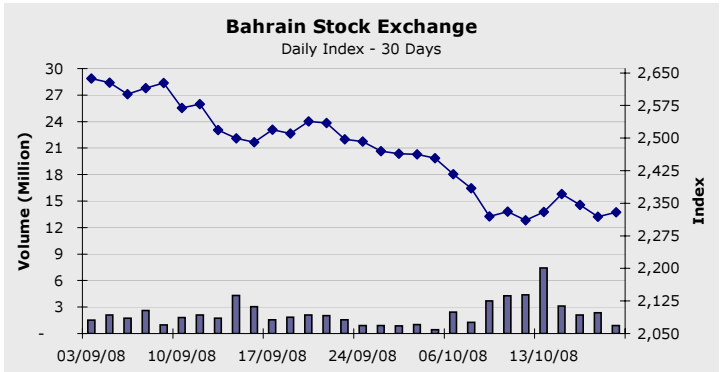
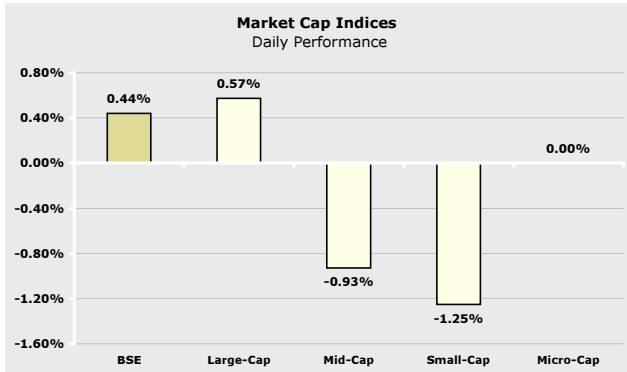
**Company News**

Company	Price			Volume
	Last	Change	% Change	
MUNTAZHAT	154	10.00	6.94	2,940,000
ALSAFAT	260	12.00	4.83	26,110,000
AINV	154	6.00	4.05	2,440,000
EXCH	216	8.00	3.84	180,000
KRE	112	4.00	3.70	2,020,000

Company	Price			Volume
	Last	Change	% Change	
KHOT	190	-20.00	-9.52	60,000
GULFINVEST	100	-10.00	-9.09	160,000
KCPC	255	-25.00	-8.92	20,000
FTI	270	-25.00	-8.47	10,000
JEERANH	218	-20.00	-8.40	460,000

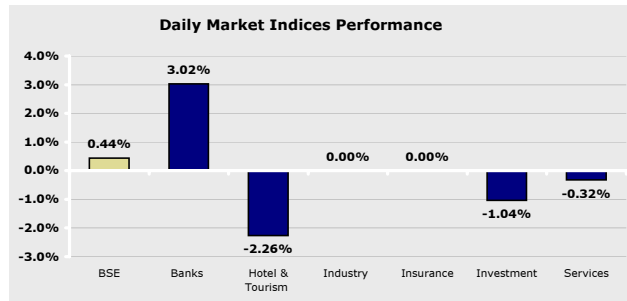
**Bahrain Stock Exchange**

October 19, 2008



Index *	Last	Change (%)		
		Day	Week	YTD
Large-Cap	1,254.20	0.57	2.36	-29.25
Mid-Cap	6,560.69	-0.93	-1.80	-10.37
Small -Cap	1,833.82	-1.25	1.81	-12.23
Micro-Cap	2,286.29	0.00	0.78	-11.31

\* Base date is 01/01/1999, Value = 1,000



Company	Price	Change (%)	Market Cap (BHD Mil)	P/E	P/B
QTEL.BSE	22.93	0.00	2,522	14.09	3.18
GLOBAL.BSE	1.45	0.00	1,799	14.10	3.99
AUB	0.34	7.06	1,532	11.48	1.77
BATELCO	0.63	-0.32	904	9.04	2.10
BMUSC	0.82	0.00	754	8.22	1.25
BARKA	1.08	0.00	751	18.56	1.74
GFH	0.90	-5.14	713	4.61	2.11
ABC	0.34	0.00	688	N/M	0.85
INVCORP	840.83	0.00	673	11.92	1.45
NBB	0.74	0.00	575	12.91	2.42

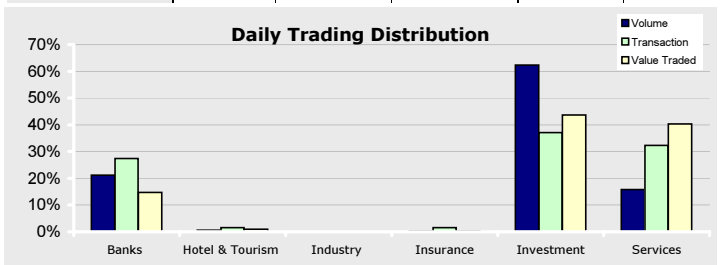
Index	Last	Change (%)		
		Day	Week	YTD
BSE	2,328.85	0.44	0.77	-15.48
Banks	2,947.76	3.02	1.22	-15.27
Hotel & Tourism	2,754.64	-2.26	-4.20	18.98
Industry	1,376.77	0.00	0.00	-4.29
Insurance	2,349.01	0.00	0.00	1.43
Investment	2,129.00	-1.04	1.75	-16.40
Services	1,698.07	-0.32	-3.00	-16.41

BASI	19/10/2008	16/10/2008	Change (%)	50-day Average	Change (%)
Trading Vol. (million)	0.89	2.36	-62.06	2.55	-64.86
Transactions	62	99	-37.37	145	-57.14
Value Traded (BHD Million)	0.27	0.51	-47.04	1.18	-77.26

Company	Volume		Price	
	Shares	Market %	Last	% Change
ITHMR	415,800	46.49	0.50	-1.96
SALAM	160,000	17.89	0.18	-2.77
KHCB	137,394	15.36	0.26	-2.22
BMMI	110,000	12.30	0.74	-3.26
AUB	20,689	2.31	0.91	7.05

Company	Price			Volume
	Last	Change	% Change	
AUB	0.91	0.06	7.05	20,689
CINEMA	1.00	0.03	2.88	3,000
DUTYF	0.93	0.01	0.54	20,000

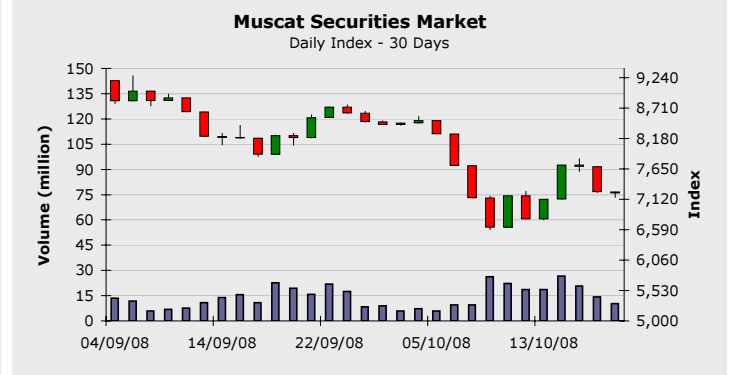
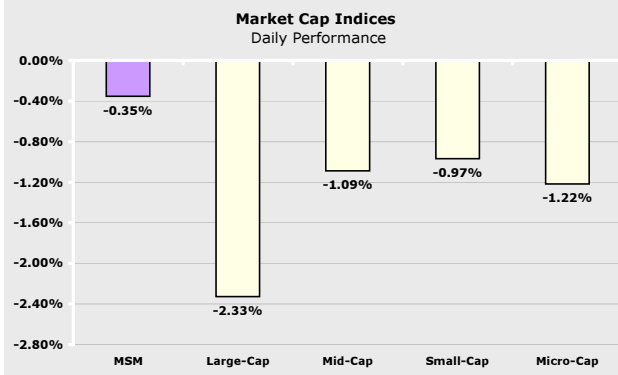
Company	Price			Volume
	Last	Change	% Change	
GFH	2.40	-0.13	-5.13	4,000
BHOTEL	0.50	-0.03	-4.76	5,000
BMMI	0.74	-0.03	-3.26	110,000
SALAM	0.18	-0.01	-2.77	160,000
KHCB	0.26	-0.01	-2.22	137,394



**Company News**

**Muscat Securities Market**

**October 19, 2008**



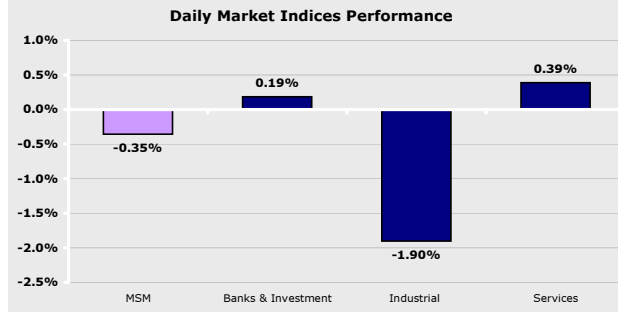
**Market Cap Indices**

Index *	Last	Change (%)		
		Day	Week	YTD
Large-Cap	2,273.96	-2.33	3.20	-27.20
Mid-Cap	3,968.02	-1.09	9.05	-7.44
Small -Cap	6,343.06	-0.97	4.45	-5.33
Micro-Cap	9,077.73	-1.22	7.80	-0.83

\* Base date is 01/01/1999, Value = 1,000

**Top 10 Market Cap Companies**

Company	Price	Change (%)	Market Cap (RO Mil)	P/E	P/B
OTEL	1.88	1.62	1,410	10.20	4.20
BKMB	0.96	-5.79	1,034	10.15	1.45
NBOB	0.44	-1.12	476	9.91	1.96
RCCI	1.50	-6.00	301	7.90	3.29
OIBB	0.30	0.33	275	9.04	1.70
BKDB	0.51	0.00	271	9.50	2.40
GECS	1.13	-4.24	237	9.43	3.27
RNSS	0.85	-6.63	207	8.70	1.79
SOMS	1.99	0.71	199	16.33	9.68
BKSB	0.19	-1.54	192	147.69-	1.95

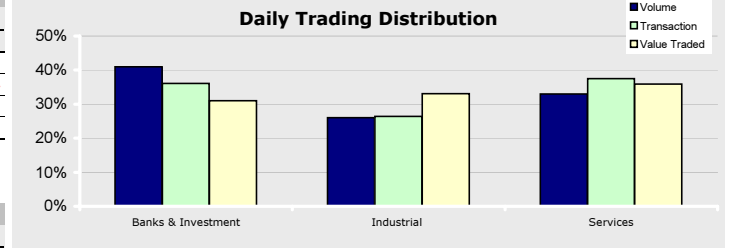


**Market Activity**

MSM	19/10/2008	16/10/2008	Change (%)	50-day Average	Change (%)
Trading Vol. (million)	10.22	14.20	-28.04	13.17	-22.41
Transactions	3,296	3,661	-9.97	3,625	-9.09
Value Traded (RO Million)	6.59	6.41	2.88	10.97	-39.89

**Muscat Securities Market Indices**

Index	Last	Change (%)		
		Day	Week	YTD
MSM	7,223.07	-0.35	6.68	-20.06
Banks & Inv.	9,192.35	0.19	8.03	-25.34
Industrial	6,927.08	-1.90	7.48	-14.87
Services & Ins.	3,345.85	0.39	6.39	-5.30



**Most Active Stocks**

Company	Volume		Price	
	Shares	Market %	Last	% Change
BKMB	1,342,025	13.13	0.96	-5.78
AJSS	1,154,038	11.29	0.16	-1.21
RCCI	838,485	8.20	1.50	-6.00
GECS	608,985	5.96	1.13	-4.23
ABOB	591,797	5.79	0.25	4.25

**Major Gainers**

Company	Price			Volume
	Last	Change	% Change	
ABOB	0.25	0.01	4.25	591,797
MHAS	14.50	0.50	3.56	1,133
NMWI	0.23	0.01	3.13	1,000
DBIH	0.15	0.00	2.70	143,850
GFIC	0.17	0.00	1.79	271,496

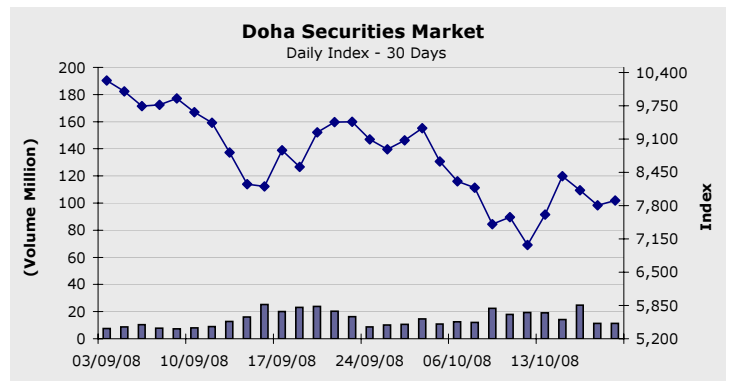
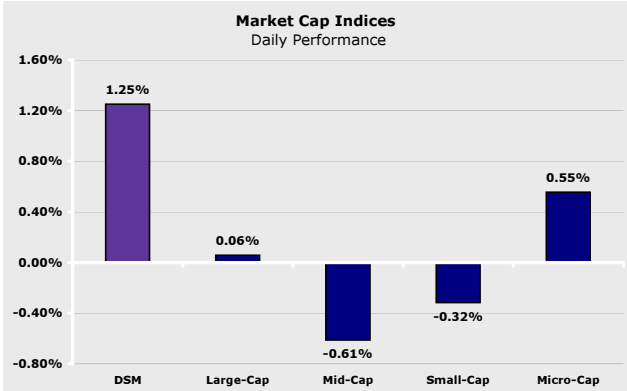
**Major Losers**

Company	Price			Volume
	Last	Change	% Change	
SPSI	8.10	-0.90	-10.00	800
NSCI	0.12	-0.01	-9.44	5,000
ONIC	0.56	-0.06	-9.20	1,512
SIHC	0.17	-0.02	-8.94	20,000
AACT	0.44	-0.04	-8.17	120,515

**Company News**

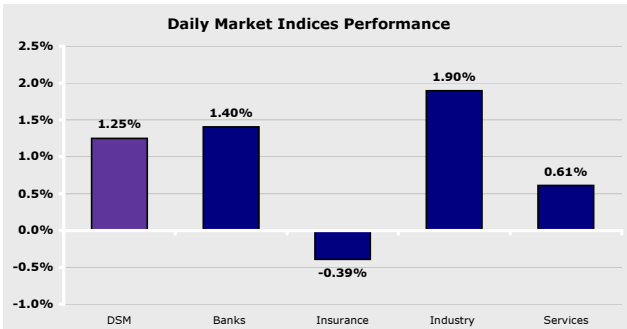
**Doha Securities Market**

**October 19, 2008**



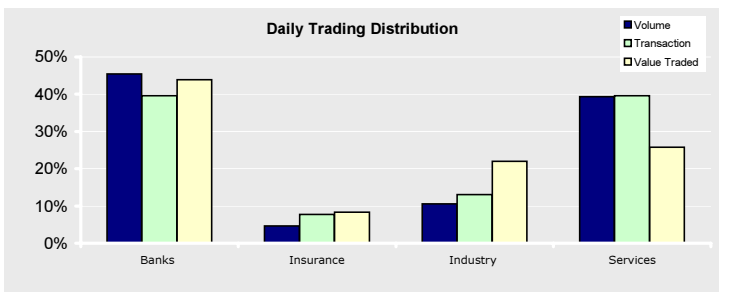
Index *	Last	Change (%)		
		Day	Week	YTD
Large-Cap	4,136.50	0.06	7.87	-17.72
Mid-Cap	9,120.15	-0.61	6.24	-18.14
Small -Cap	7,671.34	-0.32	6.33	-16.88
Micro-Cap	3,740.82	0.55	5.76	-17.46

Company	Price	Change (%)	Market Cap (QAR Mil)	P/E	P/B
IQCD	125.80	-0.16	69,190	9.19	4.24
QNBK	163.90	2.76	39,483	12.50	2.08
AHCS	65.00	-9.72	24,668	25.21	5.95
ERES	50.00	0.00	22,845	26.89	4.12
QIBK	108.20	2.08	21,306	13.26	3.23
QTEL	129.10	0.31	18,935	10.98	2.49
CBQK	85.10	3.28	17,548	9.72	2.36
QGTS	26.20	-1.13	14,672	89.02	3.13
BRES	47.60	0.21	12,495	20.58	2.65
MARK	15.80	0.64	11,850	15.27	2.35



DSM	19/10/2008	16/10/2008	Change (%)	50-day Average	Change (%)
Trading Vol. (million)	11.41	11.25	1.40	11.94	-4.46
Transactions	7,007	7,392	-5.21	7,057	-0.70
Value Traded (QAR Million)	497.26	451.48	10.14	612.87	-18.86

Index	Last	Change (%)		
		Day	Week	YTD
DSM	7,901.62	1.25	12.40	-17.52
Banks	11,312.64	1.40	10.84	62.27
Insurance	6,797.08	-0.39	3.26	-38.40
Industry	7,911.37	1.90	20.19	-9.46
Services	5,616.44	0.61	11.07	-24.42



Company	Volume		Price	
	Shares	Market %	Last	% Change
MARK	2,984,288	26.16	15.80	0.63
QGTS	1,954,635	17.14	26.20	-1.13
IQCD	758,095	6.65	125.80	-0.15
QIBK	651,464	5.71	108.20	2.07
GISS	640,570	5.62	29.00	1.75

Company	Price			Volume
	Last	Change	% Change	
AKHI	55.80	3.30	6.28	15,489
DBIS	37.00	1.40	3.93	62,292
CBQK	85.10	2.70	3.27	564,396
QNBK	163.90	4.40	2.75	81,470
ZHCD	69.00	1.80	2.67	253

Company	Price			Volume
	Last	Change	% Change	
QGRI	101.50	-11.00	-9.77	2,150
AHCS	65.00	-7.00	-9.72	7,061
DOHI	25.30	-2.40	-8.66	136,480
QATI	106.50	-8.40	-7.31	327,740
QNNS	85.80	-4.20	-4.66	96,510

**Company News**

## Disclaimer:

All rights reserved. Any unauthorized use or disclosure is prohibited. This report has been prepared and issued by Zughaihi & Kabbani Financial Consultants. The information herein was obtained from various sources; we do not guarantee its accuracy or completeness. Neither the information nor any opinion expressed constitutes an offer, or an invitation to make an offer, to buy or sell any securities or any options, futures or other derivatives related to such securities ("related investments"). ZKFC may from time to time perform investment advisory or other services. This research report is prepared for general circulation and is circulated for general information only. It does not have regard to the specific investment objectives, financial situation and the particular needs of any specific person who may receive this report. Investors should seek financial advice regarding the appropriateness of investing in any securities or investment strategies discussed or recommended in this report and should understand that statements regarding future prospects may not be realized. Investors should note that income from such securities, if any, may fluctuate and that each security's price or value may rise or fall. Accordingly, investors may receive back less than originally invested. Past performance is not necessarily a guide to future performance. Foreign currency rates of exchange may adversely affect the value, price or income of any security or related investment mentioned in this report.