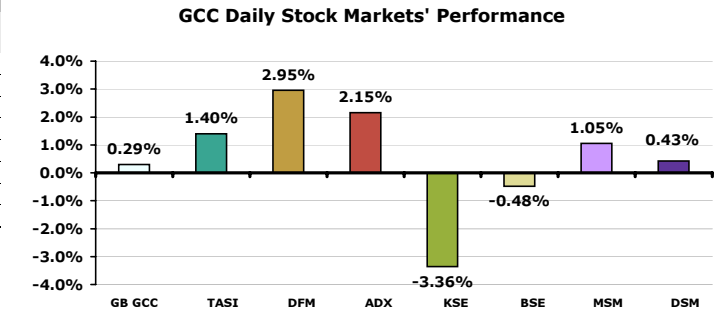


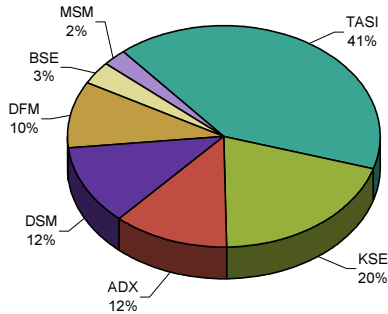
GCC Stock Markets

October 20, 2008

GCC Stock Market Indices				
Index	Last	Change	Change (%)	Volume (Million)
GB GCC	4,631.59	13.54	0.29	1,015.17
Saudi (TASI)	6,345.75	87.43	1.40	281.73
Dubai (DFM)	3,310.91	94.98	2.95	358.00
Abu Dhabi (ADX)	3,520.96	74.20	2.15	137.40
Kuwait (KSE)	10,856.90	-377.20	-3.36	209.94
Bahrain (BSE)	2,317.61	-11.24	-0.48	1.46
Oman (MSM)	7,298.98	75.91	1.05	10.35
Qatar (DSM)	7,935.56	33.94	0.43	16.28



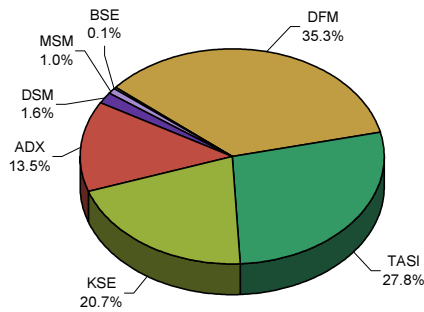
Daily Market Cap Review



Advancers & Decliners

Market	Traded stocks	Advancers	Decliners	No change
Saudi Stock Market	125	112	11	2
Dubai Financial Market	27	24	1	2
Abu Dhabi Securities Exchange	39	24	12	3
Kuwait Stock Exchange	150	7	121	22
Bahrain Stock Exchange	16	5	8	3
Muscat Securities Market	46	22	16	8
Doha Securities Market	43	29	8	6

Daily Volume Distribution

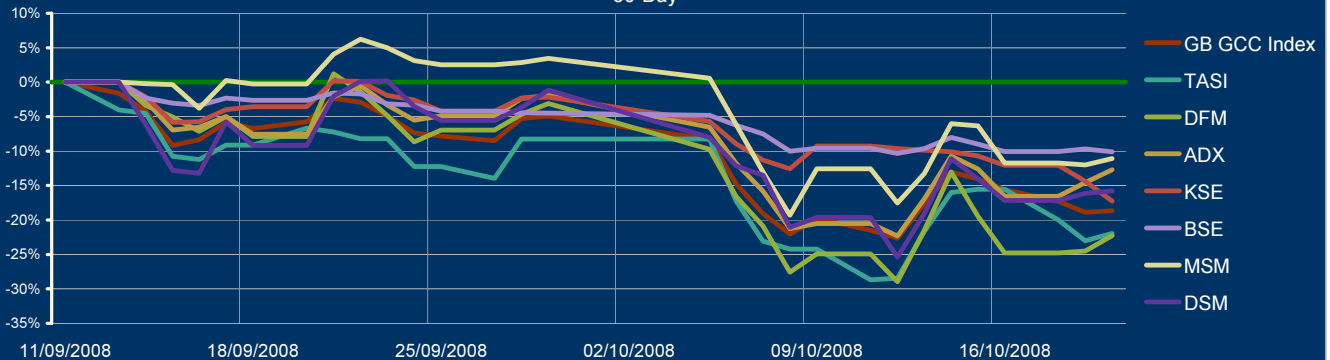


GulfBase GCC Indices

Index	Last	Change (%)		
		Day	Week	YTD
GCC General Index	4,623.50	0.12	-1.43	-33.97
GCC Large-Cap	4,536.18	-0.15	-1.26	-35.59
GCC Med-Cap	3,889.46	0.22	-2.53	-28.43
GCC Small-Cap	5,382.57	0.75	-3.73	-34.60
GCC Micro-Cap	5,841.85	1.29	-0.93	-33.94
Cement	3,833.37	-0.39	-6.06	-35.58
Commercial Srv & Supplies	4,478.62	-3.24	-4.22	-31.93
Commercial Banks	5,079.94	-0.04	0.47	-31.09
Consumer Discretionary	2,482.19	-1.98	-5.97	-29.91
Consumer Staple	3,411.40	1.25	5.19	-30.79
Energy	2,020.47	4.71	6.46	-17.74
Financial Srv	2,470.26	-2.37	-5.86	-30.65
Health Care	2,639.06	4.05	5.42	-31.98
Industrial	5,192.36	0.47	-1.77	-31.48
Insurance	1,893.32	1.43	-8.03	-50.88
Basic Material	7,685.67	1.87	-4.55	-40.86
Multi-Sector Holding	2,932.93	-3.64	-9.16	-48.38
Real Estate	3,373.17	2.26	-1.81	-43.67
Telecom	4,224.33	-2.24	-0.77	-31.72
Transport	1,946.48	4.57	2.67	-33.32
Utilities	2,511.97	1.92	4.10	-37.04

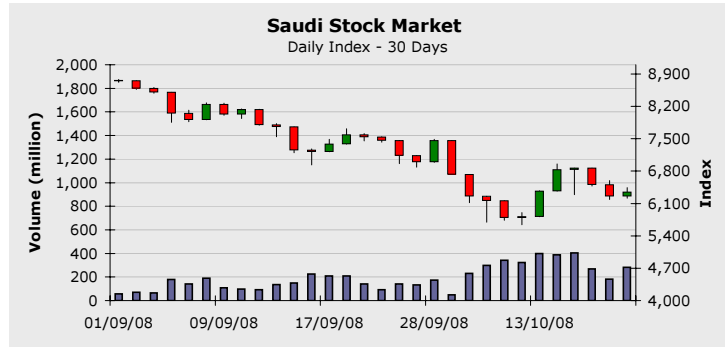
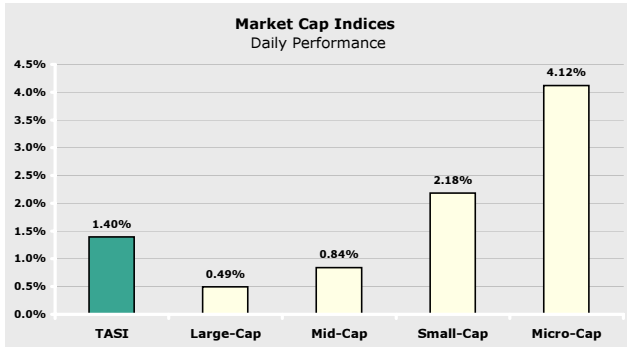
* Base date is 01/01/1999, Base Value = 1,000

GCC Stock Markets Performance 30-Day



Saudi Stock Market

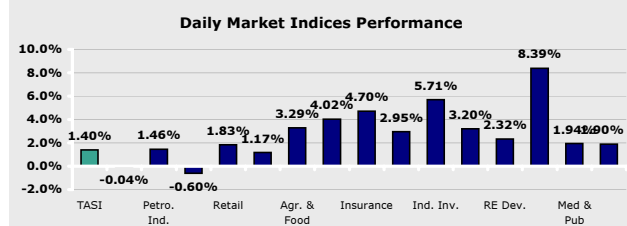
October 20, 2008



Index *	Last	Change (%)		
		Day	Week	YTD
Large-Cap	4,930.95	0.49	-0.84	-38.38
Mid-Cap	3,444.84	0.84	-1.01	-42.60
Small-Cap	3,414.35	2.18	-2.67	-44.14
Micro-Cap	5,526.72	4.12	3.91	-53.84

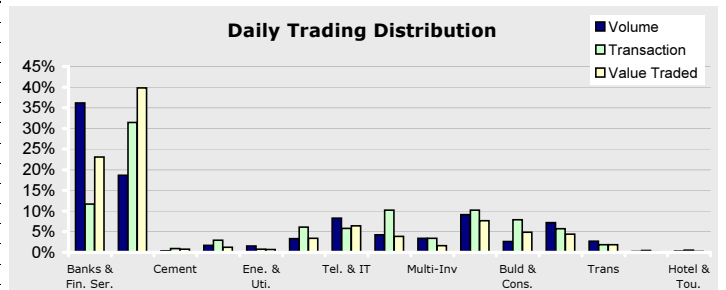
* Base date is 01/01/1999, Value = 1,000

Company	Price	Change (%)	Market Cap (SR Mil)	P/E	P/B
SABIC	88.50	2.02	265,500	9.24	2.64
STC	63.50	5.83	127,000	9.72	3.32
RJHI	77.50	1.64	116,250	17.58	4.87
SAMBA	77.25	-2.83	69,525	14.84	3.87
SECO	10.10	1.00	42,083	34.72	0.88
RIBL	26.00	0.39	39,000	12.56	1.52
SABB	64.75	0.78	38,850	13.36	3.56
KINGDOM	6.05	1.68	38,115	28.86	0.97
SAFCO	133.50	-6.64	33,375	10.20	4.41
BSFR	54.75	-2.23	30,797	11.00	2.48



TASI	20/10/2008	19/10/2008	Change (%)	50-days average	Change (%)
Trading Vol. (million)	281.73	181.57	55.17	167.40	68.30
Transactions	173,500	157,916	9.87	155,710	11.43
Value Traded (SR Million)	7,190.11	5,393.63	33.31	5,063	42.01

Index	Last	Change (%)		
		Day	Week	YTD
TASI	6,345.75	1.40	-0.31	-42.51
Banks & Fin. Ser.	17,927.88	-0.04	4.14	-41.31
Petro. Ind.	5,177.44	1.46	-7.17	-45.33
Cement	3,943.58	-0.60	-7.38	-45.55
Retail	3,461.44	1.83	5.76	-36.89
Ene. & Uti.	3,728.04	1.17	-2.44	-33.59
Agr. & Food	3,861.62	3.29	9.55	-32.65
Tel. & IT	1,986.38	4.02	1.10	-40.51
Insurance	734.41	4.70	1.53	-68.28
Multi-Inv	2,366.48	2.95	0.31	-61.97
Ind. Inv.	4,275.72	5.71	-5.05	-30.53
Buld & Cons.	4,713.70	3.20	1.71	-31.40
RE Dev.	3,772.34	2.32	2.92	-43.81
Trans	3,361.54	8.39	11.69	-37.62
Med & Pub	1,876.26	1.94	-3.77	-52.88
Hotel & Tou.	4,372.96	1.90	-5.64	-29.41



Company	Volume		Price	
	Shares	Market %	Last	% Change
ALINMA	93,969,392	33.35	13.80	2.60
ZAIN.TASI	19,772,967	7.02	15.25	4.09
MAADEN	16,823,169	5.97	16.05	7.00
SABIC	13,711,335	4.87	88.50	2.01
EMAAR.TASI	11,789,175	4.18	12.65	4.54

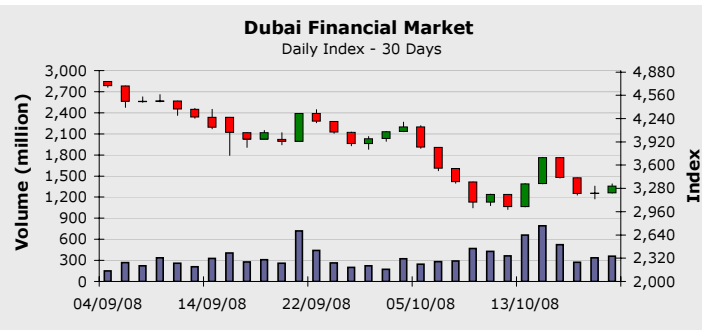
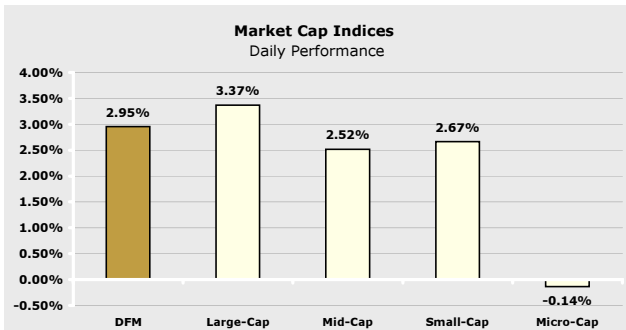
Company	Price			Volume
	Last	Change	% Change	
WALAA	14.90	1.35	9.96	278,802
NSCSA	18.80	1.70	9.94	4,545,214
GUCIC	13.85	1.25	9.92	356,960
AICC	14.40	1.30	9.92	252,277
BUPA	12.20	1.10	9.90	813,856

Company	Price			Volume
	Last	Change	% Change	
SAFCO	133.50	-9.50	-6.64	7,600,514
EACCO	51.25	-1.75	-3.30	401,820
SACCO	73.75	-2.50	-3.27	85,254
ARNB	38.80	-1.30	-3.24	804,337
SAMBA	77.25	-2.25	-2.83	852,458

Company News

Dubai Financial Market

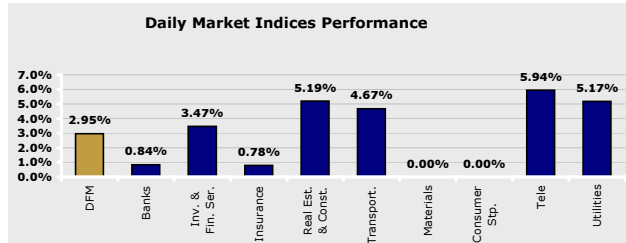
October 20, 2008



Index *	Last	Change (%)		
		Day	Week	YTD
Large-Cap	2,415.18	3.37	3.59	-44.44
Mid-Cap	3,614.71	2.52	-0.41	-21.27
Small -Cap	3,719.00	2.67	0.66	-32.38
Micro-Cap	2,767.17	-0.14	-3.05	2.45

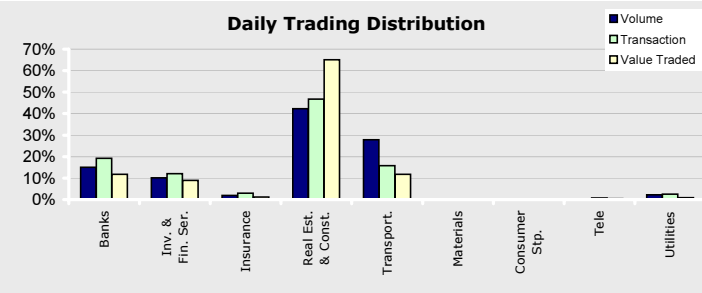
* Base date is 01/01/1999, Value = 1,000

Company	Price	Change (%)	Market Cap (AED Mil)	P/E	P/B
EMAAR	5.90	6.12	35,938	5.44	0.95
ENBD	6.94	-0.86	35,065	8.31	1.33
DFMC	2.74	5.38	21,771	17.40	2.32
DU	4.64	5.94	18,560	37.57	7.73
DIB	5.01	2.24	17,261	7.51	1.65
CBD	8.10	0.00	11,436	10.68	2.31
GGICO	8.20	2.76	8,856	11.12	2.85
DIC	2.27	2.25	7,563	4.35	1.11
DEYAAR	1.27	2.42	7,338	9.97	1.10
UPP	2.15	3.37	6,581	6.96	1.14



DFM	20/10/2008	19/10/2008	Change (%)	50-day Average	Change (%)
Trading Vol. (million)	358.00	335.18	6.81	276.03	29.70
Transactions	11,120	11,506	-3.35	8,935	24.46
Value Traded (AED Million)	1,095.32	943.43	16.10	1,014	7.97

Index	Last	Change (%)		
		Day	Week	YTD
DFM	3,310.91	2.95	-0.98	-44.19
Banks	2,104.25	0.84	-4.23	-38.37
Inv. & Fin. Services	4,972.98	3.47	4.42	-38.31
Insurance	3,852.86	0.78	-0.71	-16.78
Real Estate & Const.	5,962.35	5.19	-0.50	-56.42
Transportation	625.05	4.67	4.71	-33.18
Materials	328.15	0.00	-3.39	-5.81
Consumer Staples	396.00	0.00	4.76	-40.36
Telecommunication	750.81	5.94	3.57	-37.38
Utilities	2,199.52	5.17	-1.61	-61.67



Company	Volume		Price	
	Shares	Market %	Last	% Change
EMAAR	89,138,832	24.90	5.90	6.11
AIRARABIA	71,251,290	19.90	1.33	6.40
AJMANBANK	33,449,331	9.34	2.08	8.90
DEYAAR	30,997,628	8.66	1.27	2.41
DFMC	28,964,871	8.09	2.74	5.38

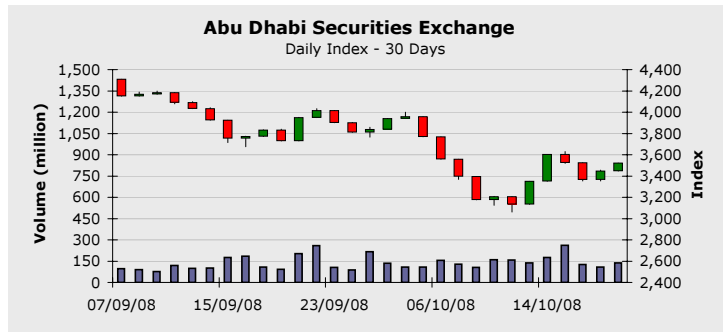
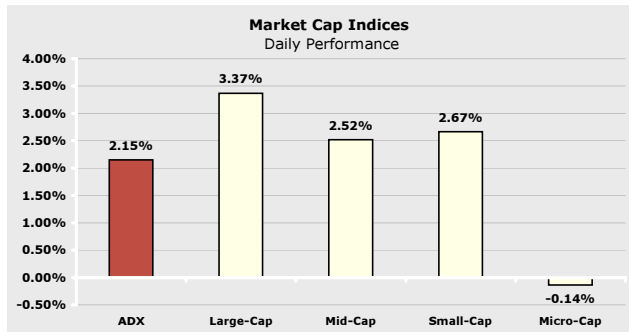
Company New

Company	Price			Volume
	Last	Change	% Change	
SIIS.DFM	16.10	2.10	15.00	3,859
KFIC.DFM	3.44	0.44	14.66	3,775
AJMANBANK	2.08	0.17	8.90	33,449,331
AIRARABIA	1.33	0.08	6.40	71,251,290
EMAAR	5.90	0.34	6.11	89,138,832

Company	Price			Volume
	Last	Change	% Change	
ENBD	6.94	-0.06	-0.85	387,303

Abu Dhabi Securities Exchange

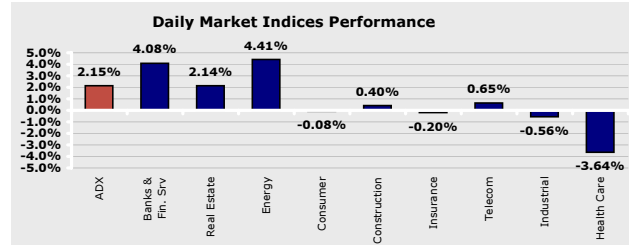
October 20, 2008



Index *	Last	Change (%)		
		Day	Week	YTD
Large-Cap	2,415.18	3.37	3.59	-44.44
Mid-Cap	3,614.71	2.52	-0.41	-21.27
Small -Cap	3,719.00	2.67	0.66	-32.38
Micro-Cap	2,767.17	-0.14	-3.05	2.45

* Base date is 01/01/1999, Value = 1,000

Company	Price	Change (%)	Market Cap (AED Mil)	P/E	P/B
ETISALAT	15.60	0.97	93,436	10.76	3.20
NBAD	13.20	3.53	26,091	8.16	1.90
FGB	12.65	8.12	17,394	6.66	1.54
ADCB	3.28	4.13	15,777	7.43	1.33
ALDAR	6.04	5.04	15,547	4.28	1.02
SOROUH	5.04	5.00	12,600	7.20	2.43
ARKAN.ADSM	5.75	0.00	10,063	41.16	4.95
UNB	5.30	6.21	9,938	7.15	1.42
ADIB	4.77	8.16	9,400	9.97	1.71
TAQA	2.20	8.37	9,130	5.52	1.34



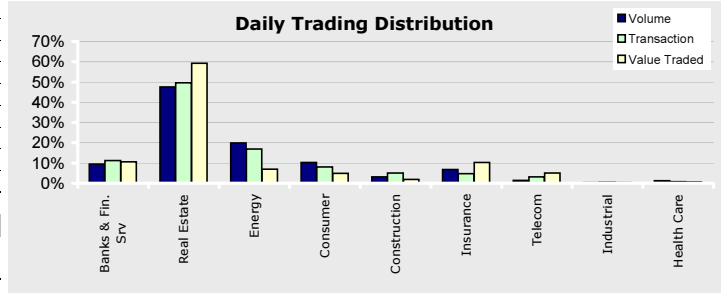
Index	Last	Change (%)		
		Day	Week	YTD
ADX	3,520.96	2.15	5.10	-22.65
Banks & Fin. Ser.	4,645.38	4.08	10.43	-22.78
Real Estate	808.04	2.14	-2.85	-47.04
Energy	247.21	4.41	10.35	-39.97
Consumer	1,710.48	-0.08	-9.51	-11.37
Construction	5,540.44	0.40	-0.88	7.47
Insurance	3,838.38	-0.20	-1.82	17.58
Telecommunication	2,643.82	0.65	5.08	-19.31
Industrial	2,470.36	-0.56	-3.61	-11.75
Health Care	1,642.41	-3.64	5.98	3.38

ADX	20/10/2008	19/10/2008	Change (%)	50-day Average	Change (%)
Trading Vol. (million)	137.40	109.24	25.78	118.02	16.42
Transactions	3,525	3,920	-10.08	3,322	6.10
Value Traded (AED Million)	559.75	451.84	23.88	625	-10.50

Company	Volume		Price	
	Shares	Market %	Last	% Change
ALDAR	34,694,065	25.25	6.04	5.04
DANA	23,513,442	17.11	1.15	2.67
SOROUH	22,228,037	16.18	5.04	5.00
TAQA	10,462,567	7.61	2.20	8.37
RAKPROP	8,361,032	6.08	1.19	5.30

Company	Price			Volume
	Last	Change	% Change	
BOS	2.84	0.48	20.33	300,000
GMPC	5.10	0.56	12.33	94,800
UCC	3.99	0.38	10.52	25,000
TKFL	9.07	0.82	9.93	3,767,945
TAQA	2.20	0.17	8.37	10,462,567

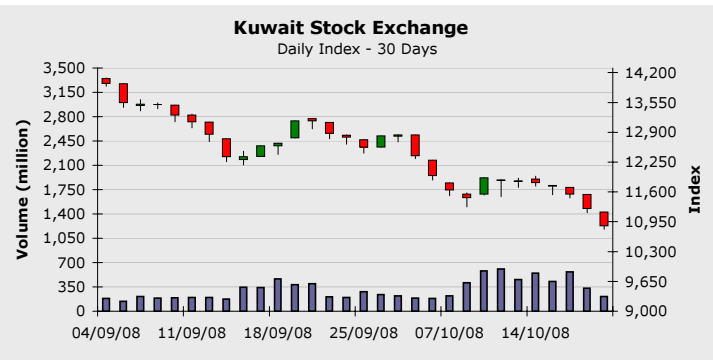
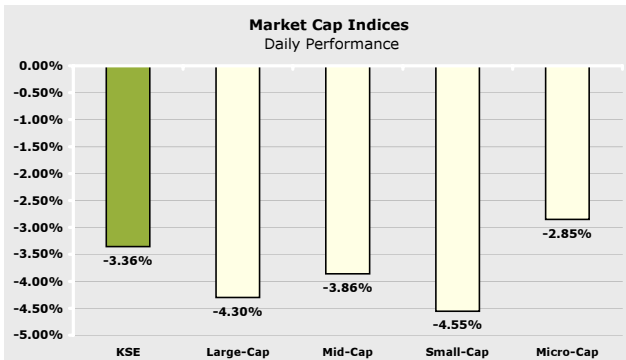
Company	Price			Volume
	Last	Change	% Change	
RAKCEC	2.63	-0.29	-9.93	350
ADSB	3.99	-0.42	-9.52	10,000
AKIC	1.73	-0.16	-8.46	2,703,655
QCEM.UAE	1.70	-0.14	-7.60	137,970
ADNH	5.00	-0.39	-7.23	151,080



Company News

Kuwait Stock Exchange

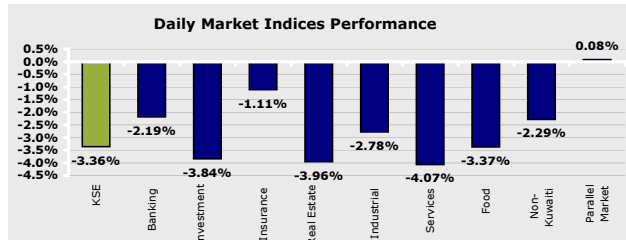
October 20, 2008



Index *	Last	Change (%)		
		Day	Week	YTD
Large-Cap	5,004.54	-4.30	-6.49	-24.85
Mid-Cap	3,567.09	-3.86	-7.68	-23.26
Small -Cap	5,122.87	-4.55	-12.10	-31.06
Micro-Cap	5,147.81	-2.85	-7.84	-28.53

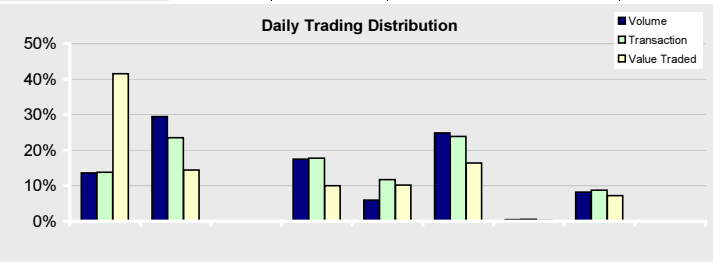
* Base date is 01/01/1999, Value = 1,000

Company	Price	Change (%)	Market Cap (KD Mil)	P/E	P/B
ZAIN	1,200	-7.69	5,016	15.70	3.27
NBK	1,680	-3.45	4,506	14.81	2.77
KFIN	2,100	-2.78	4,323	13.68	3.46
CBK	1,200	0.00	1,508	11.61	3.17
ABK	1,020	0.00	1,340	16.69	4.08
GBK	1,000	0.00	1,230	10.60	2.77
NIND	720	-6.49	1,113	6.50	1.12
KPROJ	850	-4.49	950	5.55	1.50
NMTC	1,840	-5.15	922	11.59	2.78
AGLTY	850	-5.56	889	6.08	1.26



KSE	20/10/2008	19/10/2008	Change (%)	50-day Average	Change (%)
Trading Vol. (million)	209.94	333.18	-36.99	257.68	-18.53
Transactions	5,465	7,165	-23.73	6,794	-19.56
Value Traded (KD Million)	101.81	168.96	-39.74	130	-21.77

Index	Last	Change (%)		
		Day	Week	YTD
KSE	10,856.90	-3.36	-8.20	-13.55
Banking	12,151.10	-2.19	-6.44	-16.00
Investment	11,947.60	-3.84	-9.67	-25.19
Insurance	3,343.70	-1.11	-6.99	-2.84
Real Estate	5,162.50	-3.96	-9.49	-11.56
Industrial	8,225.40	-2.78	-6.00	-0.40
Services	19,255.30	-4.07	-9.24	-9.39
Food	4,754.10	-3.37	-4.05	-27.99
Non-Kuwaiti	10,145.00	-2.29	-6.64	-7.36
Parallel Market	1,316.70	0.08	-0.70	5.45



Company	Volume		Price	
	Shares	Market %	Last	% Change
NBK	11,860,000	5.65	1680	-3.44
EKTTITAB	11,760,000	5.60	98	-3.92
ALSAFAT	9,680,000	4.61	248	-4.61
NETWORK	9,490,000	4.52	305	3.38
ALSAFWA	9,120,000	4.34	92	-5.15

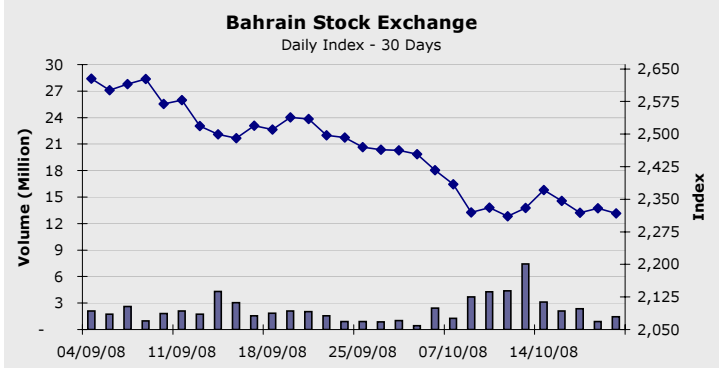
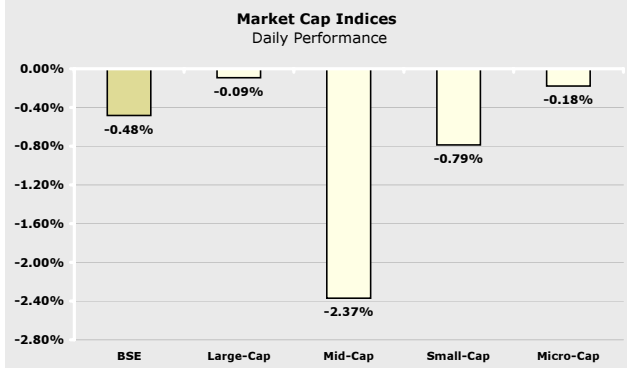
Company News

Company	Price			Volume
	Last	Change	% Change	
OSOUL	87	3.00	3.57	1,640,000
NETWORK	305	10.00	3.38	9,490,000
QCEM	124	4.00	3.33	460,000
IFAHR	730	20.00	2.81	95,000
SANAM	255	5.00	2.00	60,000

Company	Price			Volume
	Last	Change	% Change	
FIRSTDUBAI	250	-25.00	-9.09	5,460,000
KRE	102	-10.00	-8.92	1,780,000
MABANEE	1060	-100.00	-8.62	1,900,000
MRC	265	-25.00	-8.62	230,000
ILIC	265	-25.00	-8.62	240,000

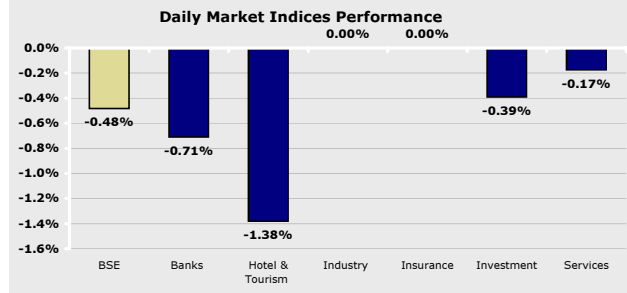
Bahrain Stock Exchange

October 20, 2008



Index *	Last	Change (%)		
		Day	Week	YTD
Large-Cap	1,253.04	-0.09	0.97	-29.32
Mid-Cap	6,405.28	-2.37	-6.91	-12.50
Small -Cap	1,819.37	-0.79	-2.08	-12.93
Micro-Cap	2,282.20	-0.18	0.60	-11.47

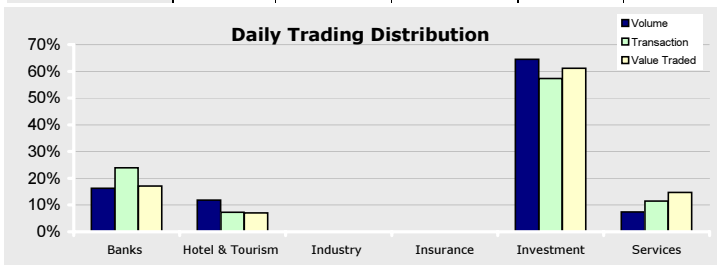
* Base date is 01/01/1999, Value = 1,000



Company	Price	Change (%)	Market Cap (BHD Mil)	P/E	P/B
QTEL.BSE	22.93	0.00	2,522	14.09	3.18
GLOBAL.BSE	1.45	0.00	1,799	14.10	3.99
AUB	0.34	0.00	1,532	11.48	1.77
BATELCO	0.63	0.32	907	9.06	2.11
BMUSC	0.82	0.00	754	8.22	1.25
BARKA	1.08	0.00	751	18.56	1.74
GFH	0.89	-0.42	710	4.59	2.11
ABC	0.34	0.00	688	N/M	0.85
INVCORP	840.83	0.00	673	11.92	1.45
NBB	0.74	0.00	575	12.91	2.42

BASI	20/10/2008	19/10/2008	Change (%)	50-day Average	Change (%)
Trading Vol. (million)	1.46	0.89	63.00	2.56	-42.95
Transactions	96	62	54.84	145	-33.81
Value Traded (BHD Million)	0.44	0.27	63.29	1.18	-62.85

Index	Last	Change (%)		
		Day	Week	YTD
BSE	2,317.61	-0.48	-0.53	-15.88
Banks	2,926.86	-0.71	1.37	-15.87
Hotel & Tourism	2,716.58	-1.38	-4.90	17.34
Industry	1,376.77	0.00	0.00	-4.29
Insurance	2,349.01	0.00	0.00	1.43
Investment	2,120.71	-0.39	-1.37	-16.72
Services	1,695.14	-0.17	-1.79	-16.55



Company	Volume		Price	
	Shares	Market %	Last	% Change
KHCB	542,400	37.21	0.27	2.27
ITHMR	295,313	20.26	0.49	-3.00
BANADER	110,194	7.56	0.07	-5.79
SALAM	102,748	7.05	0.18	1.71
TAMEERK	75,900	5.21	1.75	-4.89

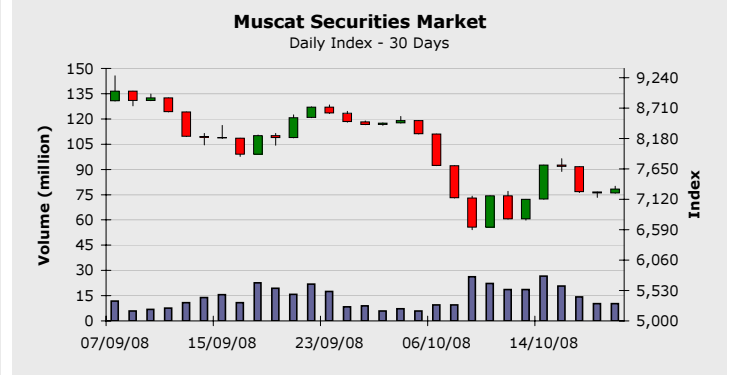
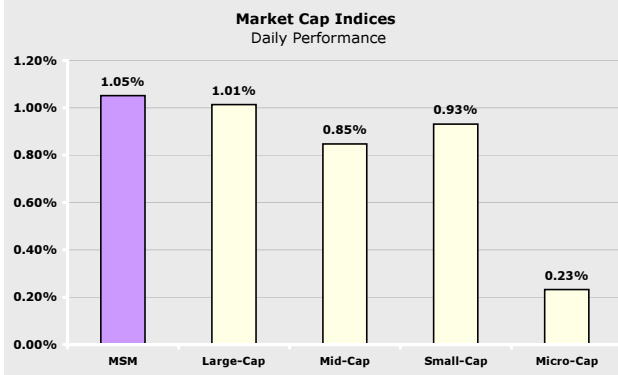
Company	Last	Price		Volume
		Change	% Change	
ESTERAD	0.65	0.04	6.39	9,061
BISB	0.49	0.01	2.29	58,000
KHCB	0.27	0.01	2.27	542,400
SALAM	0.18	0.00	1.71	102,748
BATELCO	0.63	0.00	0.31	15,000

Company	Last	Price		Volume
		Change	% Change	
BBK	0.64	-0.04	-6.15	9,031
BANADER	0.07	0.00	-5.79	110,194
BMMI	0.70	-0.04	-5.40	72,000
CPARK	0.18	-0.01	-5.26	20,000
BTC	0.36	-0.02	-5.26	50,000

Company News

Muscat Securities Market

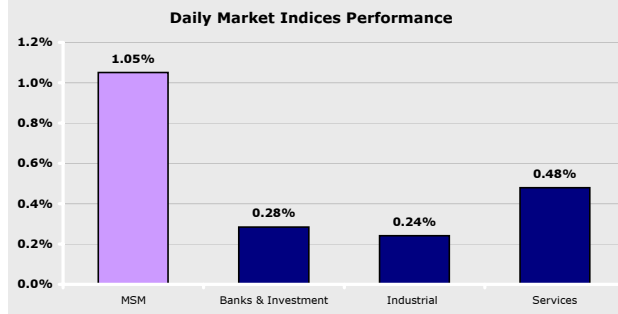
October 20, 2008



Index *	Last	Change (%)		
		Day	Week	YTD
Large-Cap	2,297.00	1.01	-1.53	-26.47
Mid-Cap	4,001.65	0.85	1.88	-6.65
Small -Cap	6,402.09	0.93	1.53	-4.45
Micro-Cap	9,098.77	0.23	1.29	-0.60

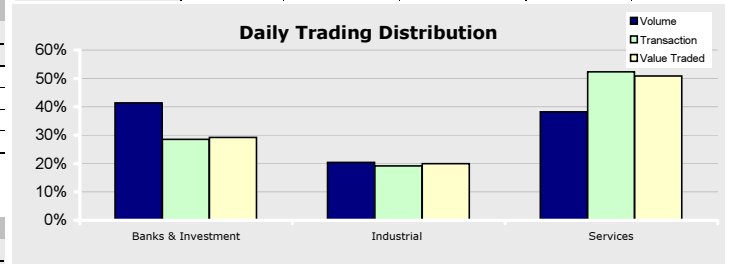
Company	Price	Change (%)	Market Cap (RO Mil)	P/E	P/B
OTEL	1.91	1.38	1,430	10.34	4.26
BKMB	1.00	3.65	1,072	10.52	1.50
NBOB	0.45	1.36	482	10.05	1.99
RCCI	1.53	1.93	307	8.05	3.35
OIBB	0.30	-1.33	271	8.92	1.68
BKDB	0.50	-1.96	265	9.31	2.35
GECS	1.19	5.31	250	9.93	3.44
RNSS	0.82	-2.96	201	8.44	1.73
SOMS	2.00	0.30	200	16.38	9.71
BKSB	0.20	2.08	196	150.77-	1.99

* Base date is 01/01/1999, Value = 1,000



MSM	20/10/2008	19/10/2008	Change (%)	50-day Average	Change (%)
Trading Vol. (million)	10.35	10.22	1.22	13.14	-21.30
Transactions	2,709	3,296	-17.81	3,623	-25.23
Value Traded (RO Million)	6.91	6.59	4.77	10.88	-36.49

Index	Last	Change (%)		
		Day	Week	YTD
MSM	7,298.98	1.05	2.49	-19.22
Banks & Inv.	9,218.49	0.28	1.96	-25.13
Industrial	6,943.80	0.24	1.46	-14.66
Services & Ins.	3,361.89	0.48	2.87	-4.85



Company	Volume		Price	
	Shares	Market %	Last	% Change
AJSS	1,434,292	13.86	0.16	0.61
BKMB	1,099,956	10.63	1.00	3.64
NBOB	903,948	8.74	0.45	1.36
RNSS	716,455	6.93	0.82	-2.95
AIT	701,846	6.78	0.27	1.49

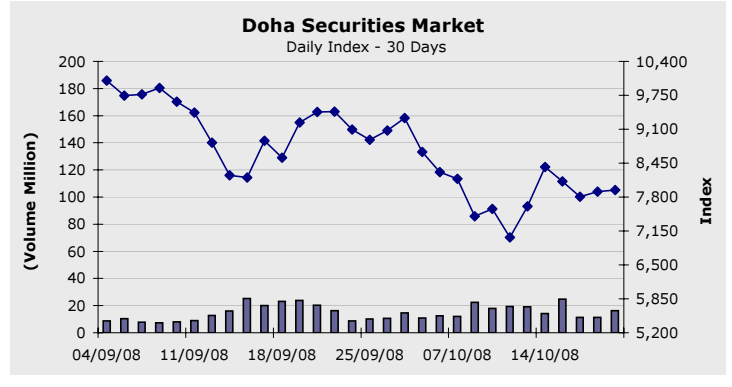
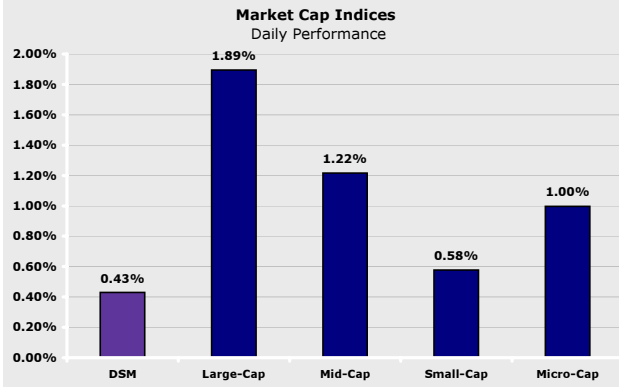
Company News

Company	Price			Volume
	Last	Change	% Change	
AACT	0.47	0.03	7.30	74,786
FSCI	0.16	0.01	5.96	163,400
GECS	1.19	0.06	5.30	543,201
UECS	0.74	0.04	5.14	10,000
ONIC	0.59	0.03	4.98	61,870

Company	Price			Volume
	Last	Change	% Change	
ONES	0.60	-0.07	-9.92	9,928
OCHI	0.10	-0.01	-5.00	10,000
RNSS	0.82	-0.03	-2.95	716,455
GFIC	0.17	-0.01	-2.94	406,591
OFCI	0.11	0.00	-2.75	109,530

Doha Securities Market

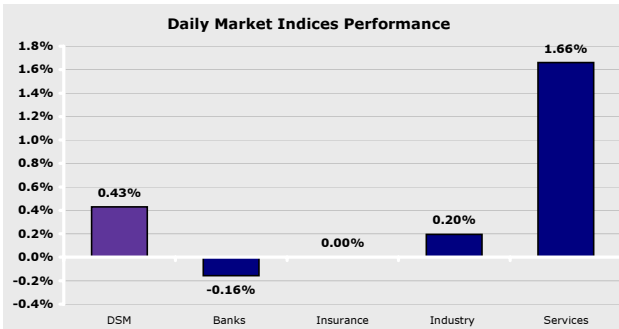
October 20, 2008



Index *	Last	Change (%)		
		Day	Week	YTD
Large-Cap	4,214.83	1.89	1.73	-16.16
Mid-Cap	9,230.99	1.22	-2.31	-17.14
Small -Cap	7,715.69	0.58	-2.66	-16.40
Micro-Cap	3,778.09	1.00	-2.48	-16.64

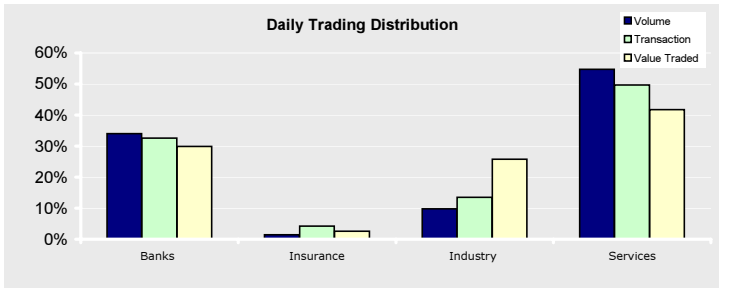
Company	Price	Change (%)	Market Cap (QAR Mil)	P/E	P/B
IQCD	130.00	3.34	71,500	9.49	4.38
QNBK	162.50	-0.85	39,146	12.39	2.06
AHCS	62.00	-4.62	23,529	24.04	5.67
ERES	50.00	0.00	22,845	26.89	4.12
QIBK	110.70	2.31	21,798	13.56	3.31
QTEL	132.80	2.87	19,477	11.29	2.56
CBQK	85.60	0.59	17,651	9.78	2.38
QGTS	28.10	7.25	15,736	95.48	3.36
BRES	50.10	5.25	13,151	21.66	2.79
MARK	15.90	0.63	11,925	15.37	2.37

* Base date is 01/01/1999, Value = 1,000



	DSM	20/10/2008	19/10/2008	Change (%)	50-day Average	Change (%)
Trading Vol. (million)	16.28	11.41	42.74	12.17	33.78	
Transactions	8,379	7,007	19.58	7,137	17.41	
Value Traded (QAR Million)	652.12	497.26	31.14	619.25	5.31	

Index	Last	Change (%)		
		Day	Week	YTD
DSM	7,935.56	0.43	4.09	-17.17
Banks	11,294.83	-0.16	2.09	62.02
Insurance	6,797.08	0.00	-4.52	-38.40
Industry	7,926.88	0.20	10.84	-9.29
Services	5,709.71	1.66	4.13	-23.16



Company	Volume		Price	
	Shares	Market %	Last	% Change
QGTS	5,318,440	32.67	28.10	7.25
MARK	3,931,083	24.14	15.90	0.63
GISS	1,216,186	7.47	30.10	3.79
IQCD	1,213,101	7.45	130.00	3.33
BRES	770,171	4.73	50.10	5.25

Company	Price			Volume
	Last	Change	% Change	
QGTS	28.10	1.90	7.25	5,318,440
IFSS	69.90	3.90	5.90	307
BRES	50.10	2.50	5.25	770,171
GWCS	26.80	1.00	3.87	109,524
DHBK	45.60	1.70	3.87	179,312

Company	Price			Volume
	Last	Change	% Change	
ZHCD	65.00	-4.00	-5.79	1,746
AKHI	53.00	-2.80	-5.01	25,345
AHCS	62.00	-3.00	-4.61	11,791
ABQK	50.00	-2.30	-4.39	1,015
QGRI	100.00	-1.50	-1.47	1,050

Company News

Disclaimer:

All rights reserved. Any unauthorized use or disclosure is prohibited. This report has been prepared and issued by Zughaihi & Kabbani Financial Consultants. The information herein was obtained from various sources; we do not guarantee its accuracy or completeness. Neither the information nor any opinion expressed constitutes an offer, or an invitation to make an offer, to buy or sell any securities or any options, futures or other derivatives related to such securities ("related investments"). ZKFC may from time to time perform investment advisory or other services. This research report is prepared for general circulation and is circulated for general information only. It does not have regard to the specific investment objectives, financial situation and the particular needs of any specific person who may receive this report. Investors should seek financial advice regarding the appropriateness of investing in any securities or investment strategies discussed or recommended in this report and should understand that statements regarding future prospects may not be realized. Investors should note that income from such securities, if any, may fluctuate and that each security's price or value may rise or fall. Accordingly, investors may receive back less than originally invested. Past performance is not necessarily a guide to future performance. Foreign currency rates of exchange may adversely affect the value, price or income of any security or related investment mentioned in this report.