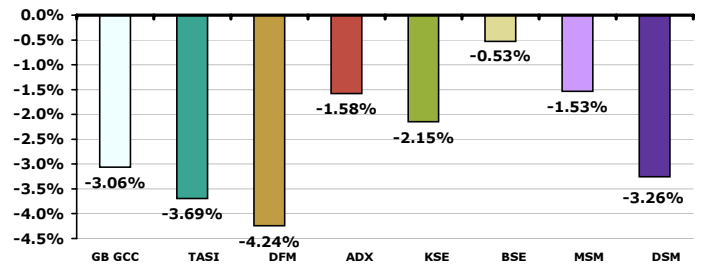


**GCC Stock Markets**

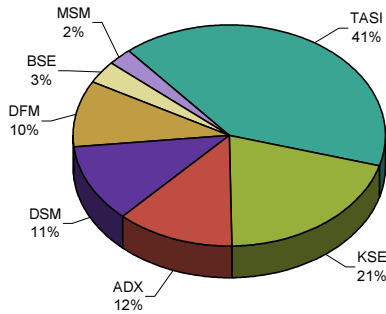
October 22, 2008

GCC Stock Market Indices				
Index	Last	Change	Change (%)	Volume (Million)
<b>GB GCC</b>	<b>4,555.18</b>	<b>-143.97</b>	<b>-3.06</b>	<b>849.10</b>
Saudi (TASI)	6,160.80	-236.34	-3.69	181.73
Dubai (DFM)	3,209.20	-142.16	-4.24	244.05
Abu Dhabi (ADX)	3,595.24	-57.63	-1.58	101.70
Kuwait (KSE)	10,804.40	-237.00	-2.15	298.96
Bahrain (BSE)	2,309.12	-12.26	-0.53	1.40
Oman (MSM)	7,265.24	-113.07	-1.53	7.13
Qatar (DSM)	7,919.09	-266.59	-3.26	14.14

**GCC Daily Stock Markets' Performance**



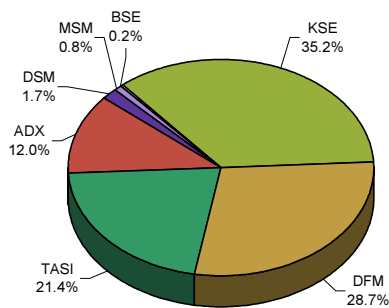
**Daily Market Cap Review**



**Advancers & Decliners**

Market	Traded stocks	Advancers	Decliners	No change
Saudi Stock Market	126	14	108	4
Dubai Financial Market	29	2	25	2
Abu Dhabi Securities Exchange	40	6	33	1
Kuwait Stock Exchange	146	17	112	17
Bahrain Stock Exchange	10	2	7	1
Muscat Securities Market	47	11	34	2
Doha Securities Market	41	3	37	1

**Daily Volume Distribution**

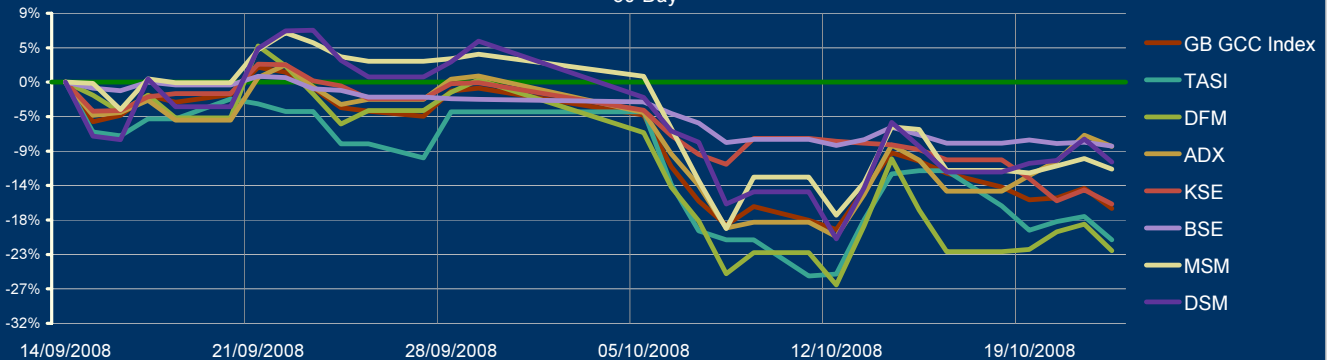


**GulfBase GCC Indices**

Index	Last	Change (%)		
		Day	Week	YTD
GCC General Index	4,555.18	-3.06	-6.92	-34.95
GCC Large-Cap	4,441.39	-3.37	-7.96	-36.94
GCC Med-Cap	3,869.20	-2.74	-5.61	-28.80
GCC Small-Cap	5,343.95	-2.45	-7.06	-35.07
GCC Micro-Cap	5,788.38	-2.67	-3.61	-34.55
Cement	3,792.85	-2.66	-6.64	-36.26
Commercial Srv & Supplies	4,342.11	-3.58	-11.22	-34.01
Commercial Banks	5,007.32	-2.56	-5.21	-32.07
Consumer Discretionary	2,450.12	-1.76	-8.27	-30.82
Consumer Staple	3,362.73	-4.05	-4.45	-31.78
Energy	1,949.09	-4.72	-2.11	-20.64
Financial Srv	2,451.93	-2.75	-7.97	-31.17
Health Care	2,607.84	-2.78	0.57	-32.78
Industrial	5,135.70	-1.90	-7.11	-32.22
Insurance	1,833.27	-2.89	-10.27	-52.44
Basic Material	7,325.76	-4.78	-16.10	-43.63
Multi-Sector Holding	3,011.72	-1.11	-9.28	-46.99
Real Estate	3,256.99	-4.74	-7.53	-45.61
Telecom	4,327.42	-2.38	-2.59	-30.05
Transport	1,943.73	-3.21	-0.43	-33.41
Utilities	2,557.03	-0.29	3.55	-35.91

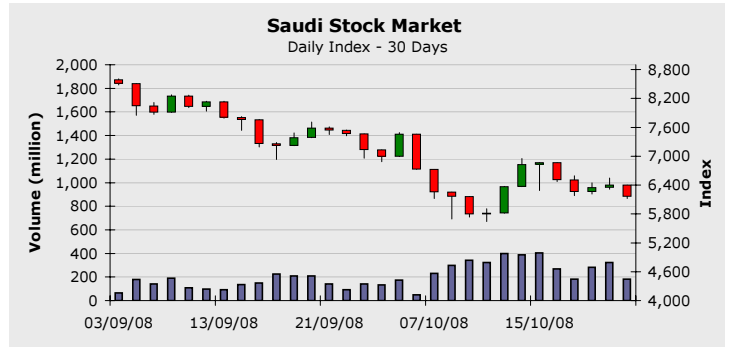
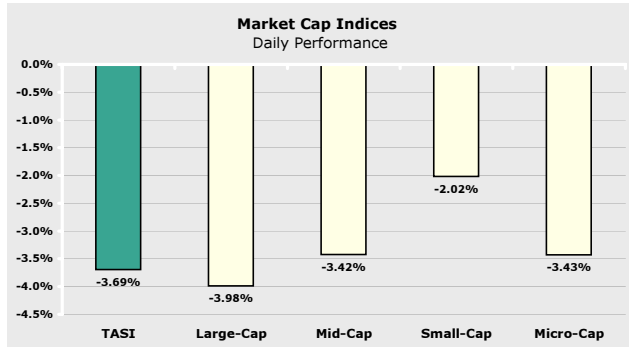
\* Base date is 01/01/1999, Base Value = 1,000

**GCC Stock Markets Performance 30-Day**



**Saudi Stock Market**

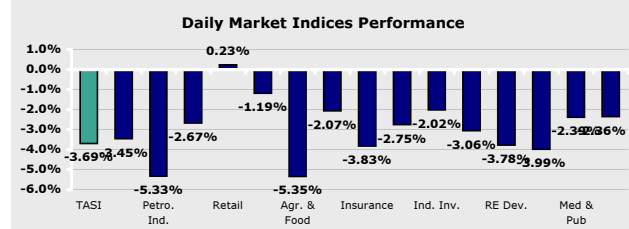
**October 22, 2008**



Index *	Last	Change (%)		
		Day	Week	YTD
Large-Cap	4,718.46	-3.98	-13.63	-41.04
Mid-Cap	3,456.26	-3.42	-5.27	-42.41
Small-Cap	3,404.35	-2.02	-7.76	-44.30
Micro-Cap	5,490.71	-3.43	-0.70	-54.14

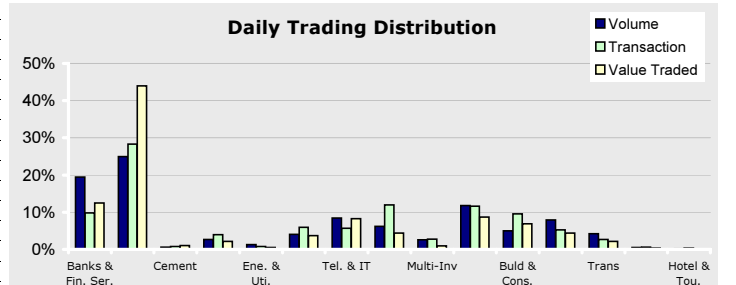
\* Base date is 01/01/1999, Value = 1,000

Company	Price	Change (%)	Market Cap (SR Mil)	P/E	P/B
SABIC	81.75	-6.03	245,250	8.54	2.44
STC	64.50	0.00	129,000	9.87	3.37
RJHI	74.25	-4.19	111,375	16.84	4.67
SAMBA	77.00	-1.91	69,300	14.79	3.86
SECO	10.00	-0.99	41,666	34.38	0.88
SABB	64.00	-1.16	38,400	13.21	3.51
KINGDOM	5.85	-2.50	36,855	27.91	0.94
RIBL	24.00	-6.25	36,000	11.59	1.41
BSFR	53.25	-3.62	29,953	10.70	2.42
SAFCO	112.00	-9.86	28,000	8.55	3.70



TASI	22/10/2008	21/10/2008	Change (%)	50-days average	Change (%)
Trading Vol. (million)	181.73	323.98	-43.91	173.86	4.53
Transactions	146,453	198,789	-26.33	157,265	-6.88
Value Traded (SR Million)	5,357.15	8,104.04	-33.90	5,188	3.27

Index	Last	Change (%)		
		Day	Week	YTD
TASI	6,160.80	-3.69	-10.23	-44.19
Banks & Fin. Ser.	17,390.84	-3.45	-8.49	-43.06
Petro. Ind.	4,863.64	-5.33	-20.22	-48.64
Cement	3,906.76	-2.67	-7.86	-46.06
Retail	3,556.04	0.23	-1.56	-35.16
Ene. & Uti.	3,692.02	-1.19	-1.55	-34.24
Agr. & Food	3,785.63	-5.35	-5.04	-33.97
Tel. & IT	1,990.44	-2.07	-1.38	-40.39
Insurance	703.20	-3.83	-3.80	-69.63
Multi-Inv	2,329.50	-2.75	-4.46	-62.56
Ind. Inv.	4,235.15	-2.02	-5.33	-31.19
Buld & Cons.	4,701.65	-3.06	-7.84	-31.57
RE Dev.	3,708.00	-3.78	-4.75	-44.77
Trans	3,471.80	-3.99	8.18	-35.57
Med & Pub	1,855.05	-2.39	-5.46	-53.42
Hotel & Tou.	4,320.79	-2.36	-6.99	-30.25



Company	Volume		Price	
	Shares	Market %	Last	% Change
ALINMA	30,894,229	17.00	13.40	-3.24
MAADEN	13,855,162	7.62	16.05	-0.61
SABIC	10,606,031	5.84	81.75	-6.03
ZAIN.TASI	10,255,463	5.64	14.65	-3.61
SAFCO	8,217,114	4.52	112.00	-9.85

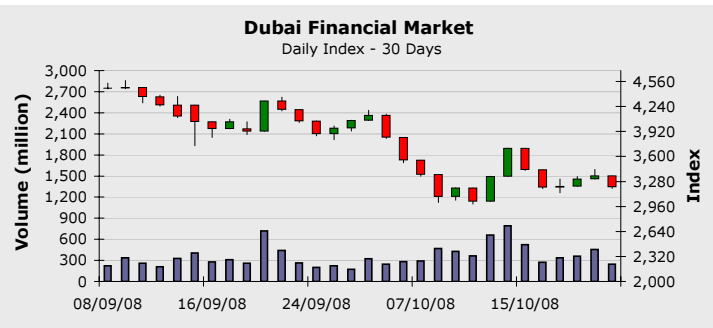
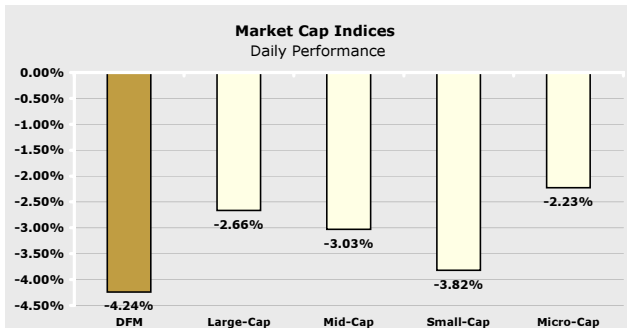
**Company News**

Company	Price			Volume
	Last	Change	% Change	
ALCO	17.95	1.60	9.78	2,459,911
MESC	59.75	3.50	6.22	1,183,229
SPM	64.00	2.25	3.64	331,343
ARCCO	48.00	1.40	3.00	447,717
HOKAIR	30.40	0.70	2.35	1,915,072

Company	Price			Volume
	Last	Change	% Change	
SAFCO	112.00	-12.25	-9.85	8,217,114
MALATH	62.25	-6.75	-9.78	304,917
AAAL	42.50	-4.50	-9.57	56,309
TRADEUNION	15.65	-1.45	-8.47	1,857,914
JADCO	21.05	-1.95	-8.47	1,050,542

**Dubai Financial Market**

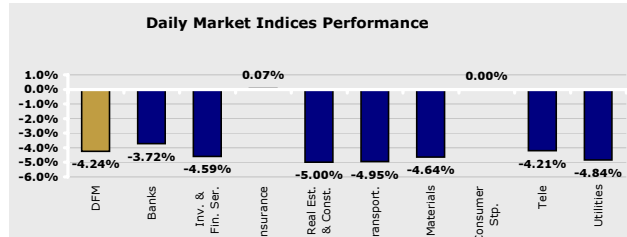
October 22, 2008



Index *	Last	Change (%)		
		Day	Week	YTD
Large-Cap	2,432.60	-2.66	-0.58	-44.04
Mid-Cap	3,520.45	-3.03	-3.94	-23.32
Small -Cap	3,623.73	-3.82	-5.96	-34.11
Micro-Cap	2,761.16	-2.23	-5.10	2.23

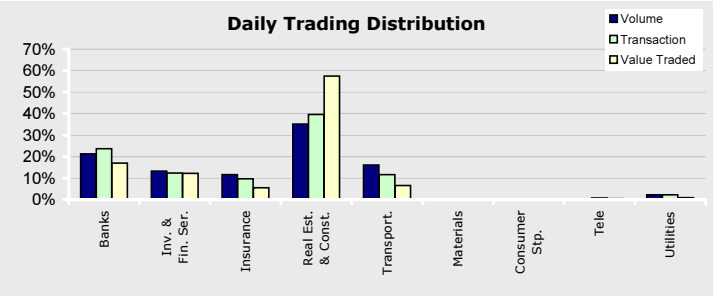
\* Base date is 01/01/1999, Value = 1,000

Company	Price	Change (%)	Market Cap (AED Mil)	P/E	P/B
EMAAR	5.74	-5.28	34,964	5.29	0.92
ENBD	6.59	-4.91	33,296	7.90	1.26
DFMC	2.60	-7.80	20,659	16.51	2.20
DU	4.55	-4.21	18,200	36.84	7.58
DIB	4.99	-2.92	17,193	7.48	1.65
CBD	7.70	-4.94	10,871	10.15	2.20
GGICO	7.95	-3.05	8,586	10.78	2.76
DIC	2.20	-2.22	7,330	4.22	1.08
DEYAAR	1.25	-3.85	7,223	9.81	1.09
UPP	2.10	-2.78	6,428	6.79	1.11



DFM	22/10/2008	21/10/2008	Change (%)	50-day Average	Change (%)
Trading Vol. (million)	244.05	455.85	-46.46	282.58	-13.63
Transactions	9,119	13,521	-32.56	9,119	0.00
Value Traded (AED Million)	748.81	1,468.24	-49.00	1,023	-26.77

Index	Last	Change (%)		
		Day	Week	YTD
DFM	3,209.20	-4.24	-6.38	-45.90
Banks	2,039.76	-3.72	-7.77	-40.26
Inv. & Fin. Services	4,808.92	-4.59	-4.45	-40.35
Insurance	3,846.77	0.07	-1.84	-16.91
Real Estate & Const.	5,780.60	-5.00	-6.86	-57.75
Transportation	597.08	-4.95	-3.19	-36.17
Materials	312.92	-4.64	-0.65	-10.18
Consumer Staples	396.00	0.00	4.76	-40.36
Telecommunication	736.25	-4.21	-4.21	-38.60
Utilities	2,127.40	-4.84	-7.81	-62.92



Company	Volume		Price	
	Shares	Market %	Last	% Change
EMAAR	51,224,370	20.99	5.74	-5.28
IAIC	26,877,172	11.01	1.37	3.00
DFMC	26,256,701	10.76	2.60	-7.80
AIRARABIA	22,076,336	9.05	1.29	-3.73
TAMWEEL	21,733,750	8.91	2.30	-9.09

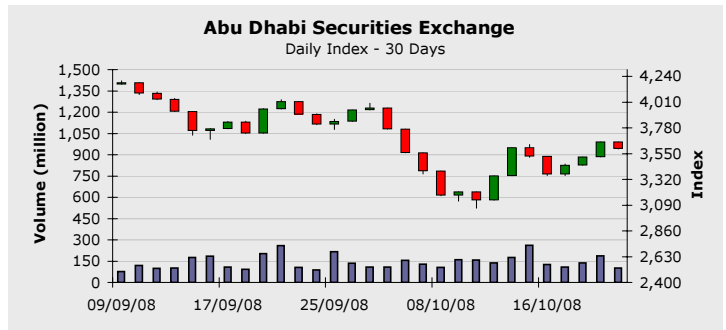
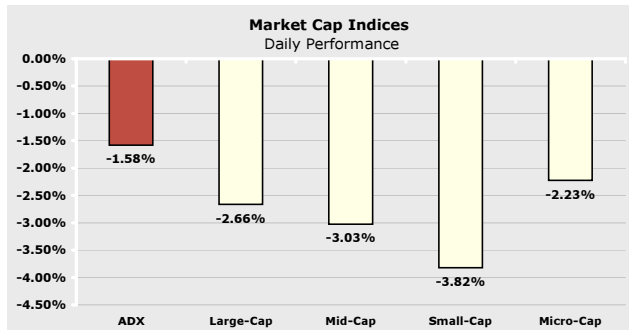
**Company New**

Company	Price			Volume
	Last	Change	% Change	
ALMADINA.DFM	5.40	0.70	14.89	25
IAIC	1.37	0.04	3.00	26,877,172

Company	Price			Volume
	Last	Change	% Change	
TAMWEEL	2.30	-0.23	-9.09	21,733,750
SHUAA	3.08	-0.27	-8.05	532,064
ARMX	1.61	-0.14	-8.00	2,057,654
DFMC	2.60	-0.22	-7.80	26,256,701
TAKAFULEM	2.40	-0.20	-7.69	1,000,753

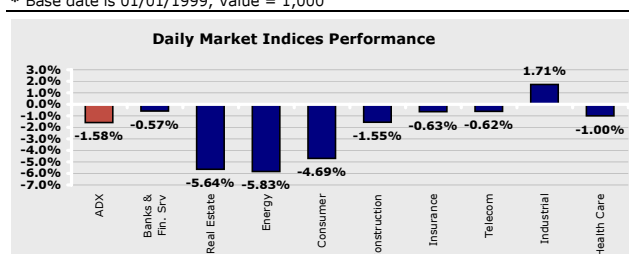
**Abu Dhabi Securities Exchange**

**October 22, 2008**



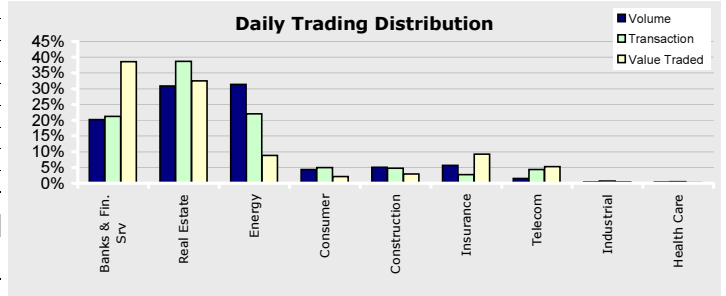
Index *	Last	Change (%)		
		Day	Week	YTD
Large-Cap	2,432.60	-2.66	-0.58	-44.04
Mid-Cap	3,520.45	-3.03	-3.94	-23.32
Small -Cap	3,623.73	-3.82	-5.96	-34.11
Micro-Cap	2,761.16	-2.23	-5.10	2.23

Company	Price	Change (%)	Market Cap (AED Mil)	P/E	P/B
ETISALAT	15.90	-2.15	95,233	10.97	3.27
NBAD	13.00	-5.11	25,696	8.04	1.88
FGB	15.15	9.39	20,831	7.98	1.84
ALDAR	5.96	-4.18	15,341	4.22	1.00
ADCB	3.10	-6.63	14,911	7.02	1.26
SOROUH	4.80	-7.16	12,000	6.86	2.32
UNB	5.64	-2.59	10,575	7.61	1.51
ARKAN.ADSM	5.65	-3.25	9,888	40.44	4.86
ADIB	4.91	-1.80	9,676	10.27	1.76
TAQA	2.15	-5.70	8,923	5.39	1.31



ADX	22/10/2008	21/10/2008	Change (%)	50-day Average	Change (%)
Trading Vol. (million)	101.70	187.83	-45.86	120.72	-15.75
Transactions	3,026	5,006	-39.55	3,379	-10.44
Value Traded (AED Million)	467.28	696.17	-32.88	626	-25.33

Index	Last	Change (%)		
		Day	Week	YTD
ADX	3,595.24	-1.58	1.97	-21.01
Banks & Fin. Ser.	4,823.47	-0.57	7.65	-19.82
Real Estate	791.30	-5.64	-9.58	-48.14
Energy	243.87	-5.83	2.06	-40.79
Consumer	1,717.56	-4.69	-6.94	-11.00
Construction	5,513.32	-1.55	-3.11	6.94
Insurance	3,834.13	-0.63	-2.22	17.45
Telecommunication	2,720.57	-0.62	1.92	-16.96
Industrial	2,627.36	1.71	-1.17	-6.14
Health Care	1,769.25	-1.00	3.97	11.36



Company	Volume		Price	
	Shares	Market %	Last	% Change
DANA	29,237,549	28.75	1.10	-3.50
ALDAR	14,521,325	14.28	5.96	-4.18
SOROUH	12,192,620	11.99	4.80	-7.15
FGB	8,595,479	8.45	15.15	9.38
METHAQ	5,720,615	5.62	7.40	-3.89

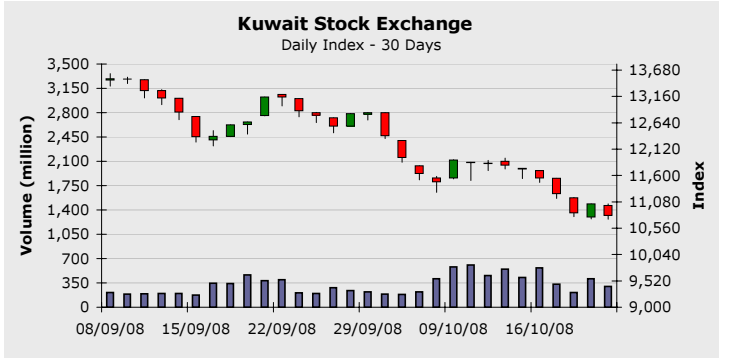
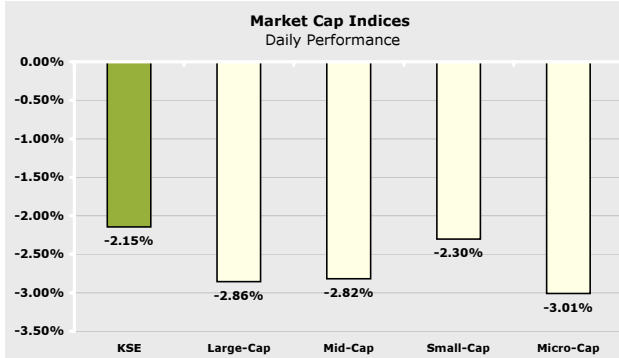
**Company News**

Company	Price			Volume
	Last	Change	% Change	
FGB	15.15	1.30	9.38	8,595,479
RAKCEC	2.85	0.22	8.36	1,000
RAPCO	2.83	0.13	4.81	275,400
BILDCO	3.76	0.17	4.73	347,266
GMPC	5.20	0.20	4.00	31,000

Company	Price			Volume
	Last	Change	% Change	
OEIHC	2.71	-0.32	-10.56	10,000
QTEL.UAE	131.00	-14.00	-9.65	2,794
SICO	5.20	-0.55	-9.56	40,000
GCEM.UAE	4.44	-0.45	-9.20	70,000
JULPHAR	1.75	-0.14	-7.40	366,838

**Kuwait Stock Exchange**

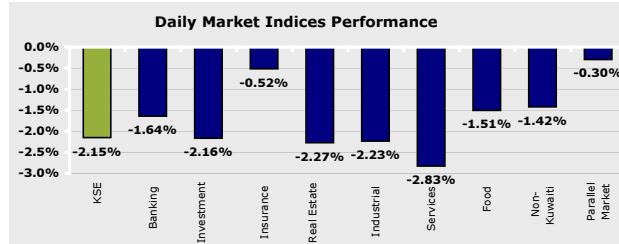
October 22, 2008



Index *	Last	Change (%)		
		Day	Week	YTD
Large-Cap	5,002.26	-2.86	-7.20	-24.89
Mid-Cap	3,556.34	-2.82	-9.72	-23.49
Small -Cap	5,078.31	-2.30	-9.70	-31.66
Micro-Cap	4,988.70	-3.01	-9.79	-30.74

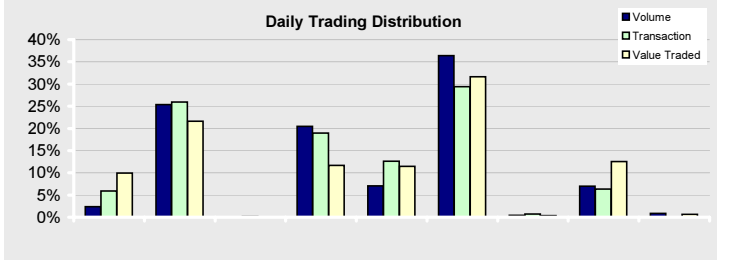
\* Base date is 01/01/1999, Value = 1,000

Company	Price	Change (%)	Market Cap (KD Mil)	P/E	P/B
ZAIN	1,220	-4.69	5,100	15.96	3.33
NBK	1,620	-3.57	4,345	14.28	2.67
KFIN	2,100	-2.78	4,323	13.68	3.46
CBK	1,220	-1.61	1,533	11.80	3.22
ABK	1,000	-1.96	1,314	16.37	4.00
GBK	990	-1.00	1,218	10.49	2.74
NIND	760	-1.30	1,175	6.87	1.18
KPROJ	880	-2.22	983	5.75	1.55
NMTC	1,840	-1.08	922	11.59	2.78
AGLTY	820	-4.65	858	5.86	1.21



KSE	22/10/2008	21/10/2008	Change (%)	50-day Average	Change (%)
Trading Vol. (million)	298.96	409.46	-26.99	265.98	12.40
Transactions	7,504	9,597	-21.81	6,945	8.05
Value Traded (KD Million)	93.84	129.23	-27.39	131	-28.45

Index	Last	Change (%)		
		Day	Week	YTD
KSE	10,804.40	-2.15	-7.81	-13.97
Banking	12,202.60	-1.64	-4.86	-15.64
Investment	11,855.90	-2.16	-8.65	-25.77
Insurance	3,352.50	-0.52	-4.29	-2.59
Real Estate	5,180.20	-2.27	-8.83	-11.26
Industrial	8,051.90	-2.23	-8.44	-2.50
Services	19,113.00	-2.83	-8.93	-10.06
Food	4,689.90	-1.51	-5.80	-28.96
Non-Kuwaiti	10,285.00	-1.42	-4.87	-6.09
Parallel Market	1,315.00	-0.30	-0.05	5.31



Company	Volume		Price	
	Shares	Market %	Last	% Change
ALSAFWA	39,480,000	13.21	84	-5.61
GFH.KW	15,245,000	5.10	620	-4.61
ABRAJ	14,120,000	4.72	410	1.23
MAYADEEN	13,860,000	4.64	118	-1.66
IIPC	13,520,000	4.52	82	6.49

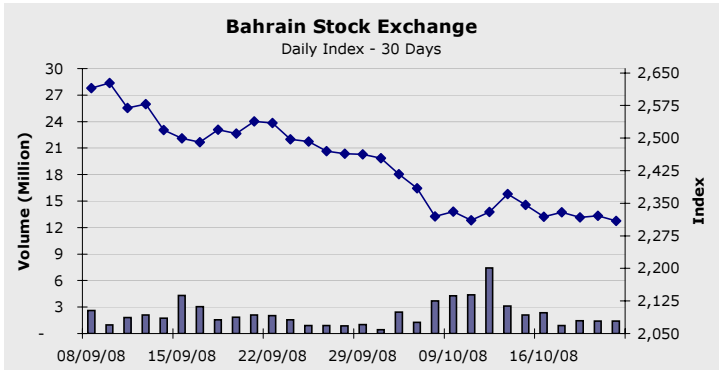
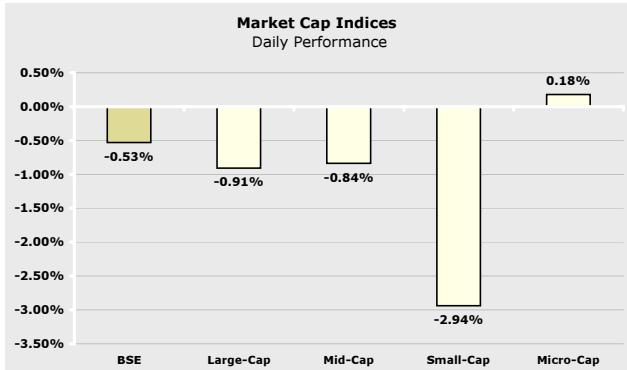
**Company News**

Company	Price			Volume
	Last	Change	% Change	
KFOUC	1360	100.00	7.93	60,000
FIRSTDUBAI	295	20.00	7.27	6,160,000
IIPC	82	5.00	6.49	13,520,000
UGB.KW	420	25.00	6.32	110,000
MTCC	162	8.00	5.19	420,000

Company	Price			Volume
	Last	Change	% Change	
SAFATGLB	350	-50.00	-12.50	70,000
MRC	260	-25.00	-8.77	450,000
IKARUS	214	-20.00	-8.54	100,000
MENAHOLD	1080	-100.00	-8.47	1,457,500
NETWORK	275	-25.00	-8.33	2,030,000

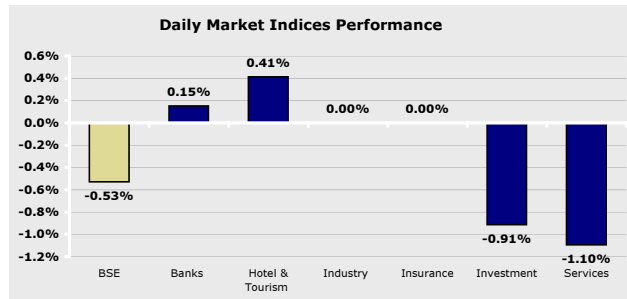
**Bahrain Stock Exchange**

October 22, 2008



Index *	Last	Change (%)		
		Day	Week	YTD
Large-Cap	1,242.58	-0.91	-1.84	-29.91
Mid-Cap	6,401.49	-0.84	-5.53	-12.55
Small -Cap	1,802.87	-2.94	-5.80	-13.72
Micro-Cap	2,254.56	0.18	-1.39	-12.54

\* Base date is 01/01/1999, Value = 1,000



Company	Price	Change (%)	Market Cap (BHD Mil)	P/E	P/B
QTEL.BSE	22.93	0.00	2,522	14.09	3.18
GLOBAL.BSE	1.45	0.00	1,799	14.10	3.99
AUB	0.34	1.11	1,532	11.48	1.77
BATELCO	0.64	-1.54	922	9.21	2.14
BMUSC	0.82	0.00	754	8.22	1.25
BARKA	1.07	0.00	743	18.36	1.72
GFH	0.87	-3.73	690	4.45	2.04
ABC	0.34	0.00	688	N/M	0.85
INVCORP	840.83	0.00	673	11.92	1.45
NBB	0.74	0.00	575	12.90	2.42

Index	Last	Change (%)		
		Day	Week	YTD
BSE	2,309.12	-0.53	-1.57	-16.19
Banks	2,904.39	0.15	-1.44	-16.52
Hotel & Tourism	2,727.78	0.41	-3.21	17.82
Industry	1,376.77	0.00	0.00	-4.29
Insurance	2,301.49	0.00	-2.02	-0.63
Investment	2,110.55	-0.91	-2.44	-17.12
Services	1,714.12	-1.10	1.30	-15.62

BASI	22/10/2008	21/10/2008	Change (%)	50-day Average	Change (%)
Trading Vol. (million)	1.40	1.41	-0.68	2.26	-38.00
Transactions	64	140	-54.29	144	-55.64
Value Traded (BHD Million)	0.43	0.61	-30.51	0.96	-55.58

Company	Volume		Price	
	Shares	Market %	Last	% Change
ITHMR	806,000	57.62	0.50	-1.00
GFH	221,440	15.83	2.32	-3.73
BANADER	123,388	8.82	0.07	6.15
SALAM	121,700	8.70	0.18	-2.23
BISB	50,000	3.57	0.46	-2.33

Company	Price			Volume
	Last	Change	% Change	
BANADER	0.07	0.00	6.15	123,388
AUB	0.91	0.01	1.11	15,000

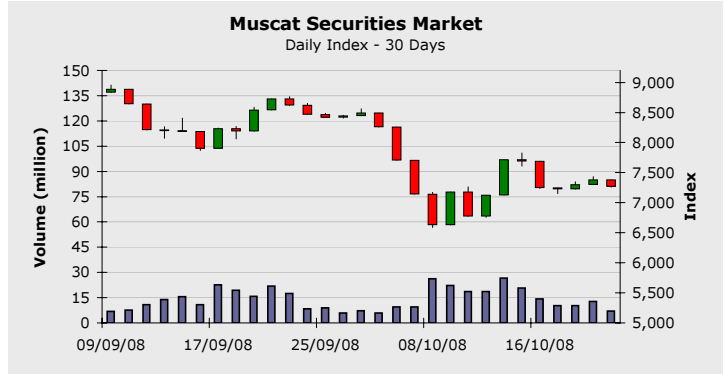
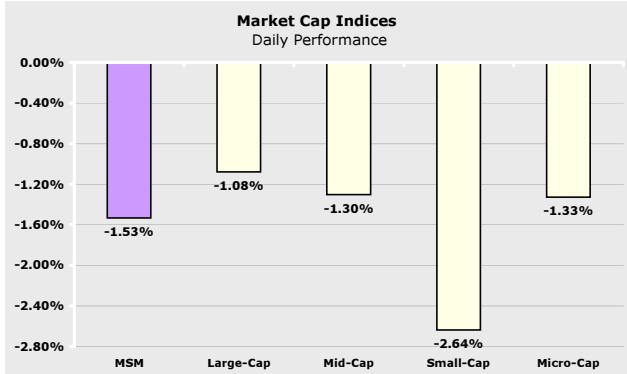
Company	Price			Volume
	Last	Change	% Change	
ESTERAD	0.59	-0.06	-9.86	6,382
GFH	2.32	-0.09	-3.73	221,440
BISB	0.46	-0.01	-2.33	50,000
SALAM	0.18	0.00	-2.23	121,700
KHCB	0.26	-0.01	-1.88	15,000



**Company News**

**Muscat Securities Market**

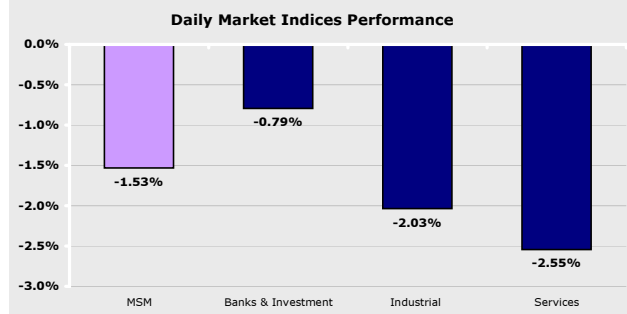
October 22, 2008



Index *	Last	Change (%)		
		Day	Week	YTD
Large-Cap	2,285.94	-1.08	-6.88	-26.82
Mid-Cap	3,933.65	-1.30	-5.74	-8.24
Small -Cap	6,224.62	-2.64	-5.77	-7.10
Micro-Cap	8,716.06	-1.33	-6.87	-4.78

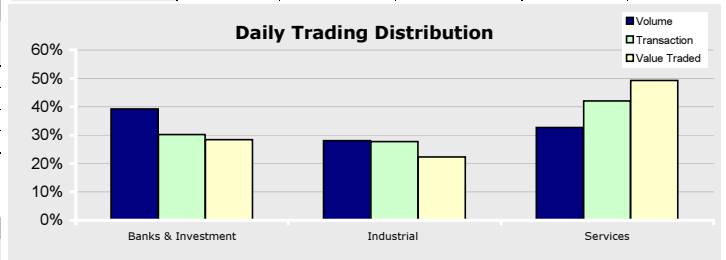
\* Base date is 01/01/1999, Value = 1,000

Company	Price	Change (%)	Market Cap (RO Mil)	P/E	P/B
OTEL	1.90	-1.04	1,425	10.30	4.25
BKMB	1.01	0.70	1,083	10.62	1.52
NBOB	0.45	-0.88	485	10.11	2.00
RCCI	1.52	-3.80	304	7.98	3.32
OIBB	0.30	-1.34	269	8.86	1.66
GECS	1.19	-2.54	250	9.92	3.44
BKDB	0.45	-7.22	239	8.38	2.12
RNSS	0.86	4.27	210	8.81	1.81
SOMS	2.00	0.00	200	16.42	9.74
BKSB	0.19	-0.52	190	146.15	1.93



MSM	22/10/2008	21/10/2008	Change (%)	50-day Average	Change (%)
Trading Vol. (million)	7.13	12.83	-44.43	13.13	-45.70
Transactions	1,898	2,999	-36.71	3,617	-47.53
Value Traded (RO Million)	4.07	7.61	-46.47	10.74	-62.08

Index	Last	Change (%)		
		Day	Week	YTD
MSM	7,265.24	-1.53	-5.53	-19.59
Banks & Inv.	9,147.78	-0.79	-6.62	-25.71
Industrial	6,844.79	-2.03	-7.33	-15.88
Services & Ins.	3,349.73	-2.55	-3.88	-5.19



Company	Volume		Price	
	Shares	Market %	Last	% Change
RNSS	854,502	11.99	0.86	4.26
AAIT	785,960	11.03	0.27	2.63
BKSB	766,609	10.76	0.19	-0.52
BKMB	614,124	8.62	1.01	0.70
AJSS	573,482	8.05	0.16	-2.46

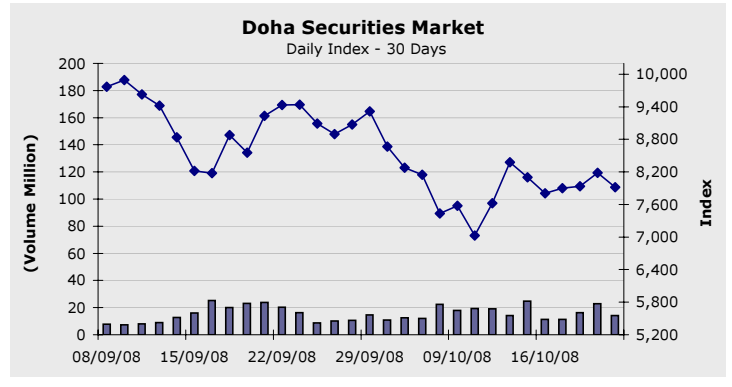
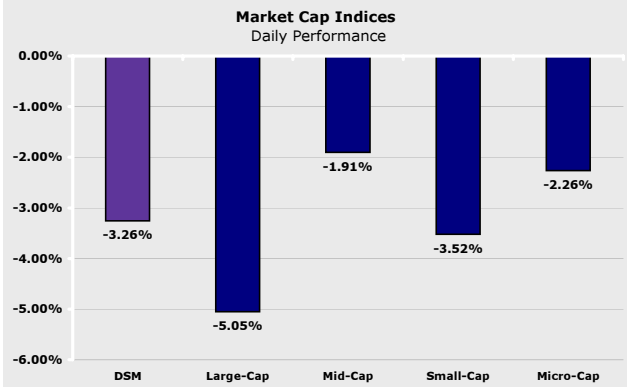
Company	Price			Volume
	Last	Change	% Change	
RNSS	0.86	0.04	4.26	854,502
AAIT	0.27	0.01	2.63	785,960
OFCI	0.10	0.00	1.96	118,227
GMPI	0.37	0.01	1.95	24,000
HECI	0.21	0.00	1.94	158,920

Company	Price			Volume
	Last	Change	% Change	
DICS	0.40	-0.04	-8.88	49,000
AESB	2.00	-0.18	-8.21	10,648
BKDB	0.45	-0.04	-7.21	41,500
OUIS	0.19	-0.01	-7.03	28,998
DCFI	0.49	-0.04	-6.66	35,000

**Company News**

**Doha Securities Market**

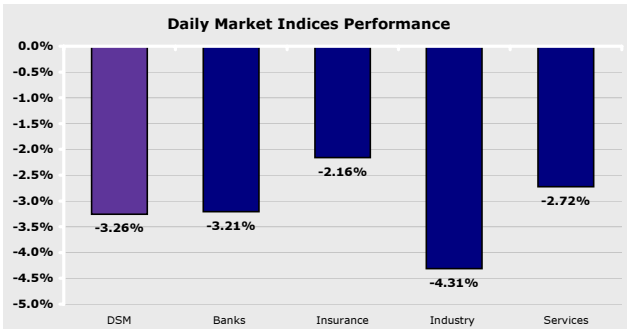
October 22, 2008



Index *	Last	Change (%)		
		Day	Week	YTD
Large-Cap	4,001.27	-5.05	-6.55	-20.41
Mid-Cap	9,095.31	-1.91	-4.26	-18.36
Small -Cap	7,664.59	-3.52	-4.28	-16.95
Micro-Cap	3,760.56	-2.26	-2.93	-17.03

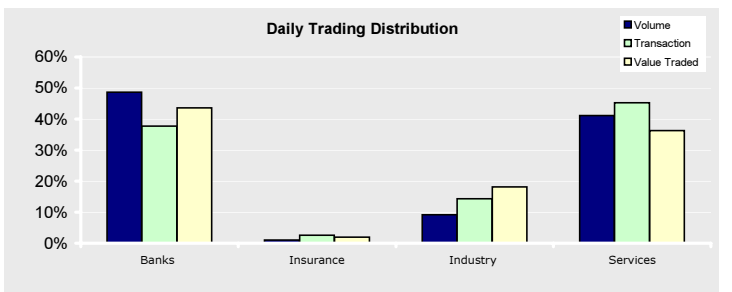
\* Base date is 01/01/1999, Value = 1,000

Company	Price	Change (%)	Market Cap (QAR Mil)	P/E	P/B
IQCD	124.90	-6.09	68,695	9.12	4.21
QNBK	160.00	-1.54	38,544	12.20	2.03
QIBK	106.70	-3.79	21,010	13.07	3.19
AHCS	54.50	-9.17	20,683	21.13	4.99
ERES	44.00	-4.97	20,104	23.67	3.63
QTEL	130.50	-2.54	19,140	11.10	2.51
CBQK	84.00	-4.44	17,321	9.60	2.33
QGTS	26.80	-5.96	15,008	91.06	3.20
BRES	45.50	-8.82	11,944	19.67	2.53
MARK	15.30	-2.55	11,475	14.79	2.28



	22/10/2008	21/10/2008	Change (%)	50-day Average	Change (%)
Trading Vol. (million)	14.14	22.82	-38.03	12.64	11.88
Transactions	7,936	9,101	-12.80	7,267	9.21
Value Traded (QAR Million)	567.47	1,135.48	-50.02	634.82	-10.61

Index	Last	Change (%)		
		Day	Week	YTD
DSM	7,919.09	-3.26	-2.22	-17.34
Banks	11,199.59	-3.21	-3.77	60.65
Insurance	6,676.42	-2.16	-6.57	-39.49
Industry	7,945.39	-4.31	0.13	-9.07
Services	5,750.02	-2.72	-0.68	-22.62



Company	Volume		Price	
	Shares	Market %	Last	% Change
MARK	4,332,518	30.64	15.30	-2.54
BRES	1,916,811	13.56	45.50	-8.81
QGTS	1,388,627	9.82	26.80	-5.96
QIBK	848,468	6.00	106.70	-3.78
FFCK	632,254	4.47	28.70	-0.34

Company	Price			Volume
	Last	Change	% Change	
QEWS	86.00	2.00	2.38	163,491
MCGS	14.10	0.10	0.71	554,057
QTIS	25.00	0.10	0.40	1,900

Company	Price			Volume
	Last	Change	% Change	
QCFS	55.00	-6.70	-10.85	398
AHCS	54.50	-5.50	-9.16	4,222
BRES	45.50	-4.40	-8.81	1,916,811
IFSS	66.80	-4.70	-6.57	1,902
IQCD	124.90	-8.10	-6.09	621,144

**Company News**

## Disclaimer:

All rights reserved. Any unauthorized use or disclosure is prohibited. This report has been prepared and issued by Zughaihi & Kabbani Financial Consultants. The information herein was obtained from various sources; we do not guarantee its accuracy or completeness. Neither the information nor any opinion expressed constitutes an offer, or an invitation to make an offer, to buy or sell any securities or any options, futures or other derivatives related to such securities ("related investments"). ZKFC may from time to time perform investment advisory or other services. This research report is prepared for general circulation and is circulated for general information only. It does not have regard to the specific investment objectives, financial situation and the particular needs of any specific person who may receive this report. Investors should seek financial advice regarding the appropriateness of investing in any securities or investment strategies discussed or recommended in this report and should understand that statements regarding future prospects may not be realized. Investors should note that income from such securities, if any, may fluctuate and that each security's price or value may rise or fall. Accordingly, investors may receive back less than originally invested. Past performance is not necessarily a guide to future performance. Foreign currency rates of exchange may adversely affect the value, price or income of any security or related investment mentioned in this report.