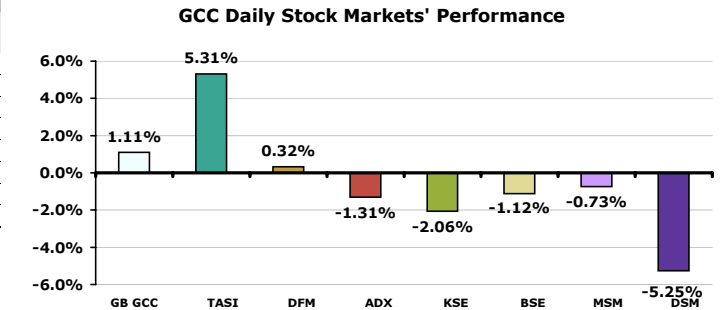


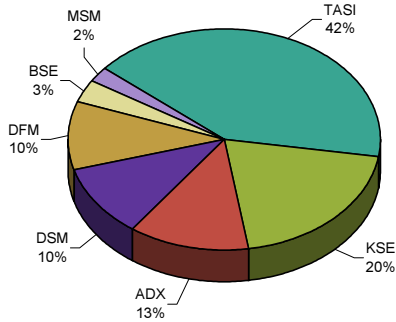
GCC Stock Markets

October 28, 2008

GCC Stock Market Indices				
Index	Last	Change	Change (%)	Volume (Million)
GB GCC	4,039.93	44.25	1.11	1,043.70
Saudi (TASI)	5,621.99	283.30	5.31	392.20
Dubai (DFM)	2,932.06	9.40	0.32	281.52
Abu Dhabi (ADX)	3,278.13	-43.39	-1.31	101.66
Kuwait (KSE)	9,685.30	-204.00	-2.06	229.09
Bahrain (BSE)	2,119.05	-23.91	-1.12	1.72
Oman (MSM)	5,977.12	-44.10	-0.73	12.51
Qatar (DSM)	6,435.55	-356.85	-5.25	25.00



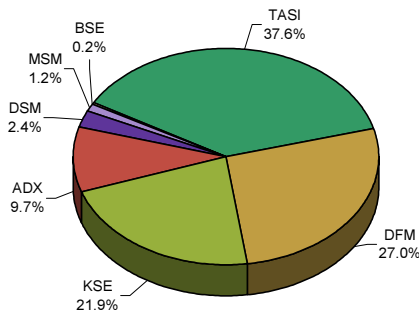
Daily Market Cap Review



Advancers & Decliners

Market	Traded stocks	Advancers	Decliners	No change
Saudi Stock Market	125	121	3	1
Dubai Financial Market	28	13	13	2
Abu Dhabi Securities Exchange	37	12	22	3
Kuwait Stock Exchange	122	18	88	16
Bahrain Stock Exchange	10	4	5	1
Muscat Securities Market	45	5	35	5
Doha Securities Market	40	10	29	1

Daily Volume Distribution

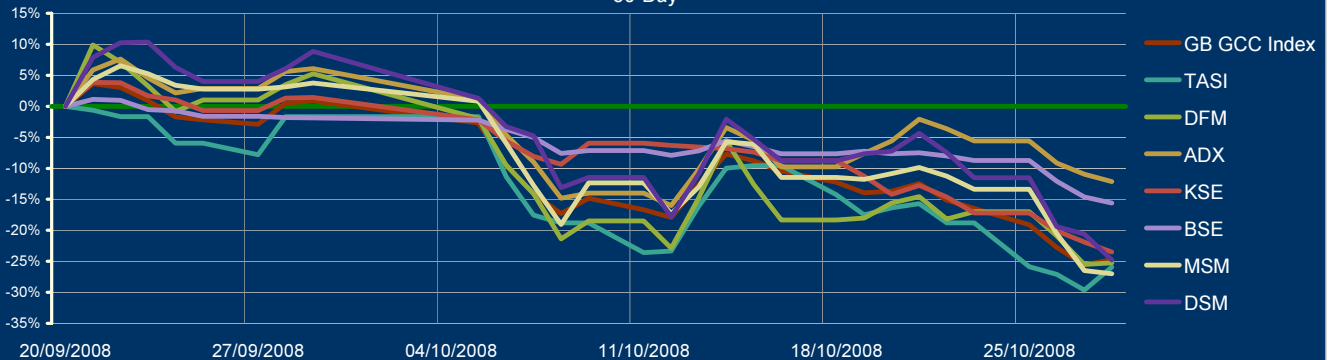


GulfBase GCC Indices

Index	Last	Change (%)		
		Day	Week	YTD
GCC General Index	4,039.93	1.11	-14.03	-42.30
GCC Large-Cap	3,947.22	0.82	-14.12	-43.95
GCC Med-Cap	3,407.90	1.56	-14.33	-37.29
GCC Small-Cap	4,630.85	1.05	-15.47	-43.73
GCC Micro-Cap	5,160.81	0.61	-13.22	-41.65
Cement	3,366.05	1.13	-13.61	-43.43
Commercial Srv & Supplies	3,613.03	-1.99	-19.77	-45.09
Commercial Banks	4,493.96	0.67	-12.55	-39.04
Consumer Discretionary	2,230.53	1.12	-10.56	-37.02
Consumer Staple	3,032.44	2.92	-13.48	-38.48
Energy	1,701.81	-1.15	-16.81	-30.71
Financial Srv	2,126.27	-2.09	-15.67	-40.31
Health Care	2,381.03	2.07	-11.24	-38.63
Industrial	4,344.53	-1.16	-17.01	-42.67
Insurance	1,598.50	1.14	-15.32	-58.53
Basic Material	6,391.68	5.02	-16.92	-50.82
Multi-Sector Holding	2,332.66	-4.90	-23.41	-58.94
Real Estate	2,761.54	-0.13	-19.23	-53.89
Telecom	4,054.13	2.69	-8.54	-34.47
Transport	1,762.97	4.97	-12.21	-39.60
Utilities	2,259.50	1.11	-11.89	-43.37

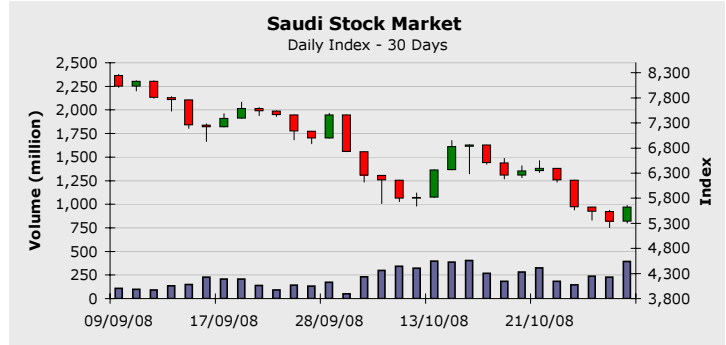
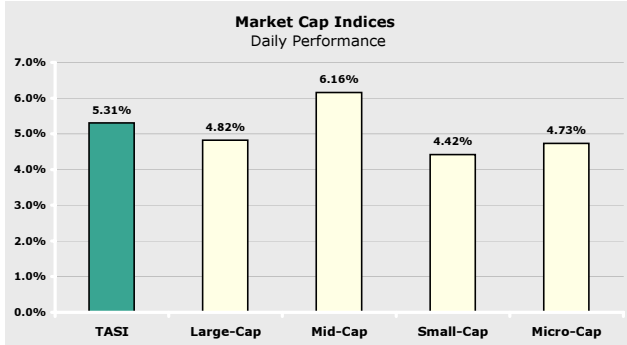
* Base date is 01/01/1999, Base Value = 1,000

GCC Stock Markets Performance 30-Day



Saudi Stock Market

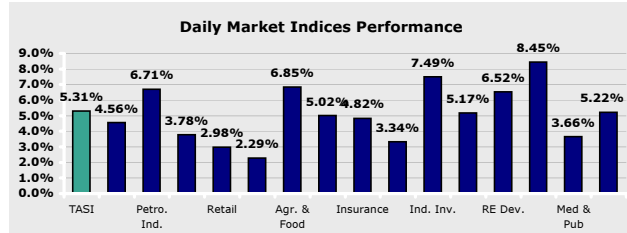
October 28, 2008



Index *	Last	Change (%)		
		Day	Week	YTD
Large-Cap	4,393.31	4.82	-10.60	-45.10
Mid-Cap	3,128.28	6.16	-12.59	-47.88
Small-Cap	2,936.71	4.42	-15.48	-51.95
Micro-Cap	4,923.78	4.73	-13.40	-58.88

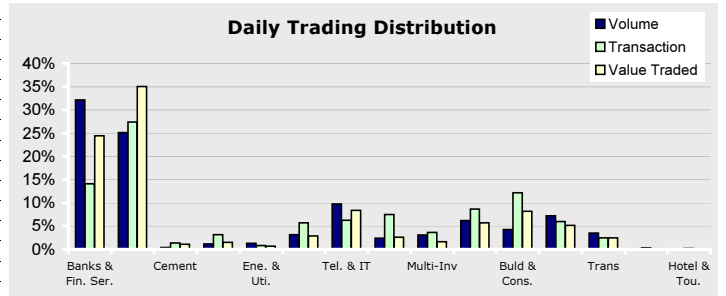
Company	Price	Change (%)	Market Cap (SR Mil)	P/E	P/B
SABIC	75.25	7.12	225,750	7.90	2.20
STC	61.00	3.39	122,000	9.34	3.19
RJHI	66.75	4.71	100,125	15.14	4.20
SAMBA	70.50	-3.09	63,450	13.54	3.54
SABB	68.50	8.73	41,100	14.13	3.76
SECO	9.50	2.15	39,583	32.66	0.83
RIBL	23.90	8.64	35,850	11.54	1.40
KINGDOM	5.10	2.00	32,130	24.33	0.82
BSFR	56.25	9.76	31,641	11.30	2.55
SAFCO	95.50	7.61	23,875	5.32	3.11

* Base date is 01/01/1999, Value = 1,000



TASI	28/10/2008	27/10/2008	Change (%)	50-days average	Change (%)
Trading Vol. (million)	392.20	225.60	73.85	184.74	112.30
Transactions	200,192	152,273	31.47	158,407	26.38
Value Traded (SR Million)	7,843.23	5,044.21	55.49	5,316	47.55

Index	Last	Change (%)		
		Day	Week	YTD
TASI	5,621.99	5.31	-12.12	-49.07
Banks & Fin. Ser.	16,392.44	4.56	-9.00	-46.33
Petro. Ind.	4,326.48	6.71	-15.79	-54.32
Cement	3,585.65	3.78	-10.67	-50.49
Retail	3,105.86	2.98	-12.46	-43.37
Ene. & Uti.	3,490.10	2.29	-6.59	-37.83
Agr. & Food	3,466.23	6.85	-13.33	-39.54
Tel. & IT	1,824.82	5.02	-10.22	-45.35
Insurance	594.60	4.82	-18.68	-74.32
Multi-Inv	2,034.42	3.34	-15.07	-67.30
Ind. Inv.	3,701.11	7.49	-14.37	-39.86
Buld & Cons.	3,908.83	5.17	-19.41	-43.11
RE Dev.	3,319.76	6.52	-13.85	-50.55
Trans	2,969.72	8.45	-17.87	-44.89
Med & Pub	1,721.19	3.66	-9.44	-56.78
Hotel & Tou.	3,725.74	5.22	-15.81	-39.86



Company	Volume		Price	
	Shares	Market %	Last	% Change
ALINMA	114,228,330	29.13	12.30	6.95
ZAIN.TASI	34,305,137	8.75	13.05	6.96
KAYAN	23,458,958	5.98	11.75	7.79
PETORABIGH	20,859,922	5.32	24.35	2.09
EMAAR.TASI	14,804,388	3.77	11.55	10.00

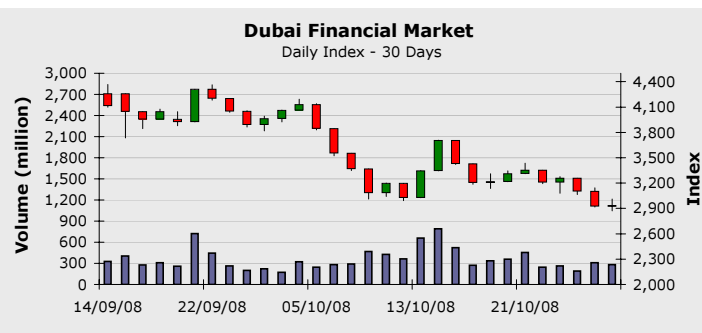
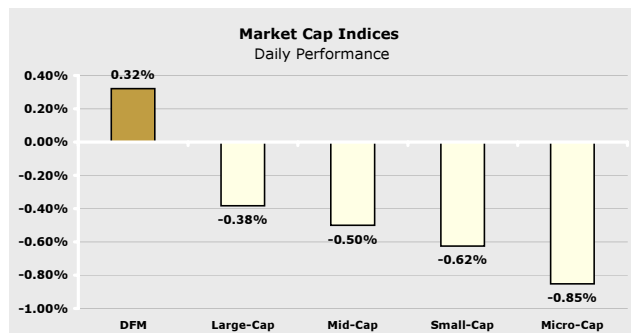
Company News

Company	Price			Volume
	Last	Change	% Change	
ALDREES	19.80	1.80	10.00	374,432
EMAAR.TASI	11.55	1.05	10.00	14,804,388
NSCSA	16.55	1.50	9.96	9,243,294
SPCO	16.25	1.45	9.79	303,988
BSFR	56.25	5.00	9.75	279,865

Company	Price			Volume
	Last	Change	% Change	
SAMBA	70.50	-2.25	-3.09	1,692,823
ARCCO	47.60	-1.40	-2.85	413,068
ALCO	14.05	-0.35	-2.43	3,379,458

Dubai Financial Market

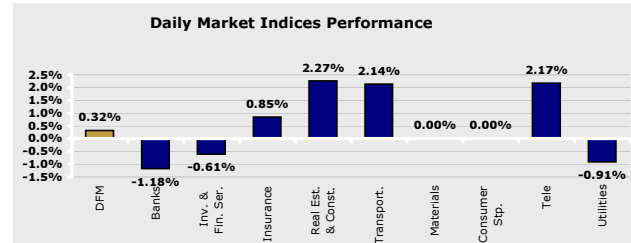
October 28, 2008



Index *	Last	Change (%)		
		Day	Week	YTD
Large-Cap	2,158.42	-0.38	-13.63	-50.35
Mid-Cap	3,303.09	-0.50	-9.01	-28.05
Small -Cap	3,260.47	-0.62	-13.46	-40.71
Micro-Cap	2,579.07	-0.85	-8.67	-4.51

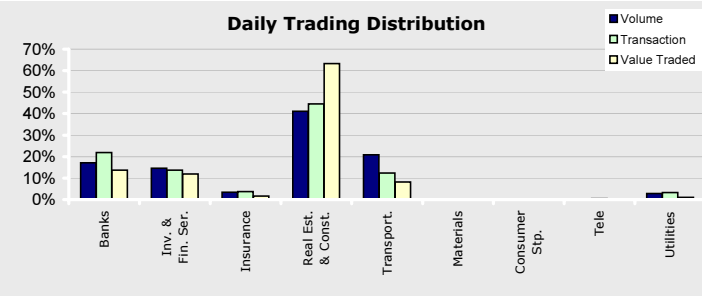
* Base date is 01/01/1999, Value = 1,000

Company	Price	Change (%)	Market Cap (AED Mil)	P/E	P/B
EMAAR	5.28	3.53	32,162	4.86	0.85
ENBD	6.06	-2.10	30,618	7.26	1.16
DFMC	2.29	0.44	18,196	14.54	1.94
DU	4.24	2.17	16,960	34.33	7.07
DIB	4.13	-0.48	14,230	6.19	1.36
CBD	7.32	-4.94	10,335	9.28	2.13
GGICO	7.46	-5.21	8,057	10.12	2.59
DEYAAR	1.15	0.88	6,645	9.03	1.00
DIC	1.93	1.58	6,430	3.70	0.95
UPP	2.00	-0.50	6,122	6.47	1.06



DFM	28/10/2008	27/10/2008	Change (%)	50-day Average	Change (%)
Trading Vol. (million)	281.52	308.80	-8.83	285.22	-1.30
Transactions	10,097	10,614	-4.87	9,212	9.61
Value Traded (AED Million)	828.97	928.90	-10.76	1,002	-17.29

Index	Last	Change (%)		
		Day	Week	YTD
DFM	2,932.06	0.32	-12.51	-50.57
Banks	1,865.75	-1.18	-11.94	-45.36
Inv. & Fin. Services	4,288.42	-0.61	-14.91	-46.81
Insurance	3,795.44	0.85	-1.27	-18.02
Real Estate & Const.	5,288.41	2.27	-13.09	-61.35
Transportation	540.83	2.14	-13.91	-42.18
Materials	282.45	0.00	-13.93	-18.93
Consumer Staples	396.00	0.00	0.00	-40.36
Telecommunication	686.08	2.17	-10.74	-42.78
Utilities	1,965.14	-0.91	-12.10	-65.75



Company	Volume		Price	
	Shares	Market %	Last	% Change
EMAAR	65,675,194	23.33	5.28	3.52
AIRARABIA	39,056,646	13.87	1.19	3.47
ARTC	25,418,522	9.03	5.78	-3.02
DFMC	24,397,930	8.67	2.29	0.43
AJMANBANK	16,181,280	5.75	1.90	5.55

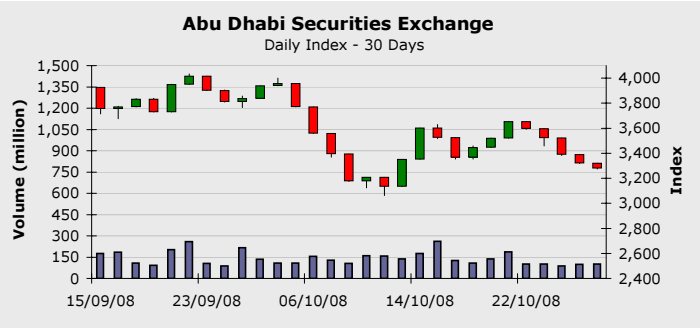
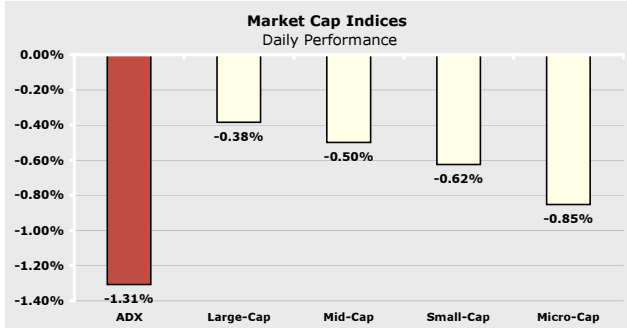
Company New

Company	Price			Volume
	Last	Change	% Change	
TAKAFULEM	2.28	0.18	8.57	1,262,303
AMAN	1.77	0.10	5.98	505,145
AJMANBANK	1.90	0.10	5.55	16,181,280
EMAAR	5.28	0.18	3.52	65,675,194
AIRARABIA	1.19	0.04	3.47	39,056,646

Company	Price			Volume
	Last	Change	% Change	
EKTITAB.DFM	1.70	-0.18	-9.57	13,324
GGICO	7.46	-0.41	-5.20	684,100
CBD	7.32	-0.38	-4.93	1,875
DARTAKAFUL	2.20	-0.10	-4.34	254,734
ARTC	5.78	-0.18	-3.02	25,418,522

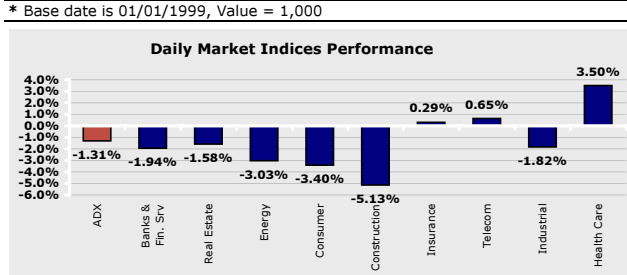
Abu Dhabi Securities Exchange

October 28, 2008



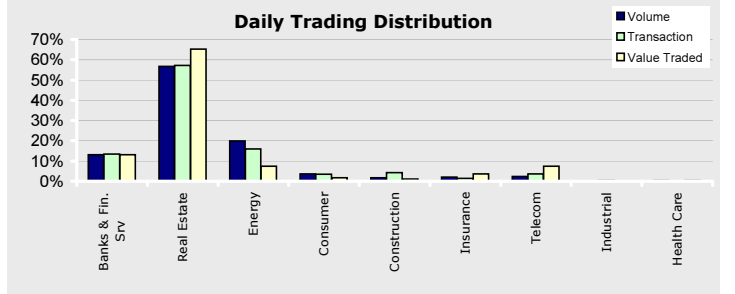
Index *	Last	Change (%)		
		Day	Week	YTD
Large-Cap	2,158.42	-0.38	-13.63	-50.35
Mid-Cap	3,303.09	-0.50	-9.01	-28.05
Small -Cap	3,260.47	-0.62	-13.46	-40.71
Micro-Cap	2,579.07	-0.85	-8.67	-4.51

Company	Price	Change (%)	Market Cap (AED Mil)	P/E	P/B
ETISALAT	15.50	0.98	92,837	10.69	3.18
NBAD	11.00	0.00	21,743	6.80	1.59
FGB	11.40	-6.17	15,675	6.00	1.39
ADCB	2.78	-0.36	13,372	6.30	1.13
ALDAR	4.92	4.46	12,664	3.48	0.83
SOROUH	3.88	-1.77	9,700	5.55	1.87
ARKAN.ADSM	5.15	-7.04	9,013	36.86	4.43
UNB	4.65	-4.12	8,719	5.20	1.15
ADIB	4.30	-0.92	8,474	8.99	1.54
TAQA	2.00	3.09	8,300	5.02	1.22



ADX	28/10/2008	27/10/2008	Change (%)	50-day Average	Change (%)
Trading Vol. (million)	101.66	100.26	1.40	119.02	-14.59
Transactions	3,305	3,485	-5.16	3,335	-0.91
Value Traded (AED Million)	382.80	361.70	5.83	591	-35.19

Index	Last	Change (%)		
		Day	Week	YTD
ADX	3,278.13	-1.31	-10.26	-27.98
Banks & Fin. Ser.	4,248.94	-1.94	-12.42	-29.37
Real Estate	648.03	-1.58	-22.73	-57.53
Energy	218.76	-3.03	-15.53	-46.88
Consumer	1,632.19	-3.40	-9.43	-15.43
Construction	4,872.30	-5.13	-13.00	-5.49
Insurance	3,774.90	0.29	-2.17	15.63
Telecommunication	2,635.29	0.65	-3.74	-19.57
Industrial	2,551.97	-1.82	-1.20	-8.83
Health Care	1,833.42	3.50	2.59	15.40



Company	Volume		Price	
	Shares	Market %	Last	% Change
ALDAR	35,493,028	34.91	4.92	4.45
SOROUH	18,262,151	17.96	3.88	-1.77
DANA	16,037,094	15.78	1.06	0.00
WAHA	5,357,109	5.27	1.11	-2.63
AABAR	4,157,445	4.09	2.75	-2.48

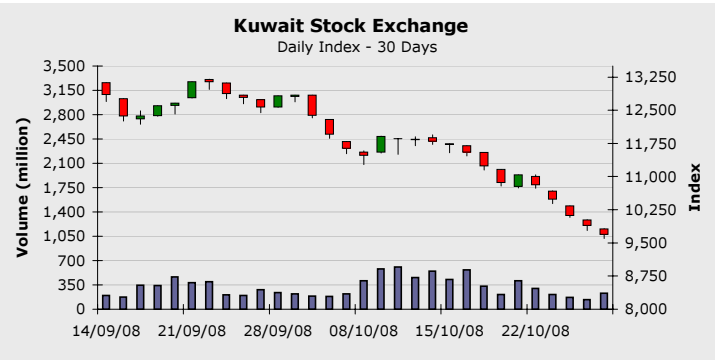
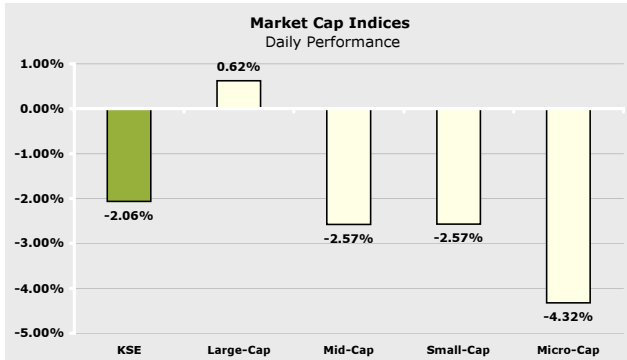
Company	Price			Volume
	Last	Change	% Change	
TKFL	8.80	1.30	17.33	13,448
GMPC	5.62	0.42	8.07	150,000
ALDAR	4.92	0.21	4.45	35,493,028
AKIC	1.45	0.05	3.57	165,430
TAQA	2.00	0.06	3.09	2,908,052

Company	Price			Volume
	Last	Change	% Change	
ASMAK	29.70	-3.30	-10.00	150
DRIVE	4.86	-0.54	-10.00	36,393
SCIDC	3.30	-0.30	-8.33	120,000
QCEM.UAE	1.25	-0.10	-7.40	315,800
ARKAN.ADSM	5.15	-0.39	-7.03	263,086

Company News

Kuwait Stock Exchange

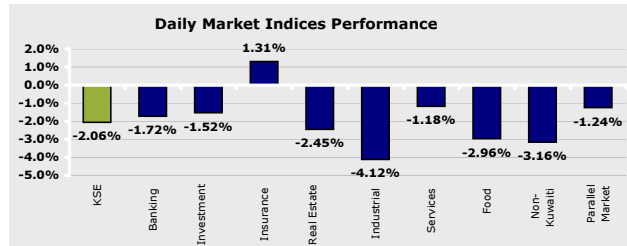
October 28, 2008



Index *	Last	Change (%)		
		Day	Week	YTD
Large-Cap	4,497.49	0.62	-12.66	-32.47
Mid-Cap	2,979.35	-2.57	-18.59	-35.90
Small -Cap	4,455.74	-2.57	-14.28	-40.04
Micro-Cap	4,399.04	-4.32	-14.48	-38.93

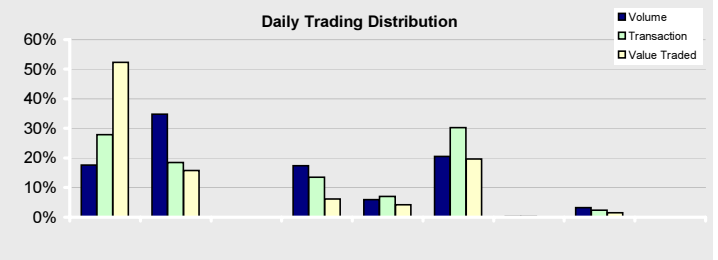
Company	Price	Change (%)	Market Cap (KD Mil)	P/E	P/B
ZAIN	1,100	5.77	4,598	14.39	3.00
NBK	1,560	4.00	4,184	14.10	2.53
KFIN	1,780	-4.30	3,664	11.49	2.79
CBK	1,220	1.67	1,533	11.52	3.20
ABK	950	0.00	1,248	16.34	3.73
GBK	950	0.00	1,169	10.50	2.62
KPROJ	780	-3.70	871	5.09	1.37
NIND	560	-8.20	865	5.06	0.87
NMTC	1,560	0.00	782	9.82	2.36
AGLTY	660	-1.49	690	4.72	0.98

* Base date is 01/01/1999, Value = 1,000



KSE	28/10/2008	27/10/2008	Change (%)	50-day Average	Change (%)
Trading Vol. (million)	229.09	139.35	64.40	266.96	-14.19
Transactions	4,689	3,267	43.53	6,820	-31.25
Value Traded (KD Million)	95.57	69.91	36.71	130	-26.50

Index	Last	Change (%)		
		Day	Week	YTD
KSE	9,685.30	-2.06	-12.28	-22.88
Banking	10,952.40	-1.72	-11.72	-24.28
Investment	10,565.70	-1.52	-12.81	-33.84
Insurance	3,380.70	1.31	0.32	-1.77
Real Estate	4,580.60	-2.45	-13.58	-21.53
Industrial	6,996.60	-4.12	-15.05	-15.28
Services	17,350.20	-1.18	-11.79	-18.35
Food	4,301.70	-2.96	-9.66	-34.84
Non-Kuwaiti	9,152.50	-3.16	-12.27	-16.43
Parallel Market	1,277.80	-1.24	-3.12	2.33



Company	Volume		Price	
	Shares	Market %	Last	% Change
QURAINHLD	52,440,000	22.89	89	-5.31
NBK	16,070,000	7.01	1560	4.00
GRAND	14,960,000	6.53	54	-1.81
KFIN	10,945,000	4.78	1780	-4.30
MAYADEEN	10,100,000	4.41	98	-2.00

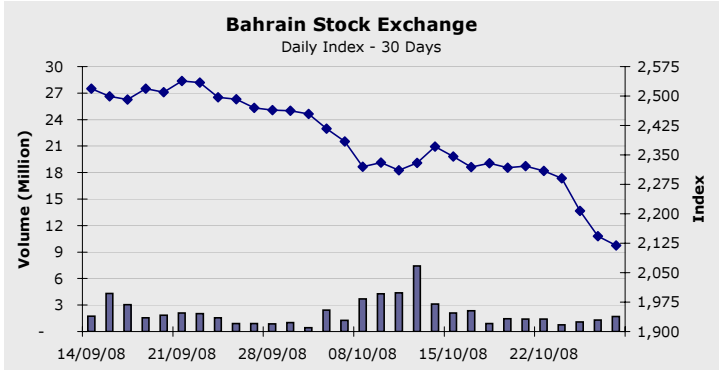
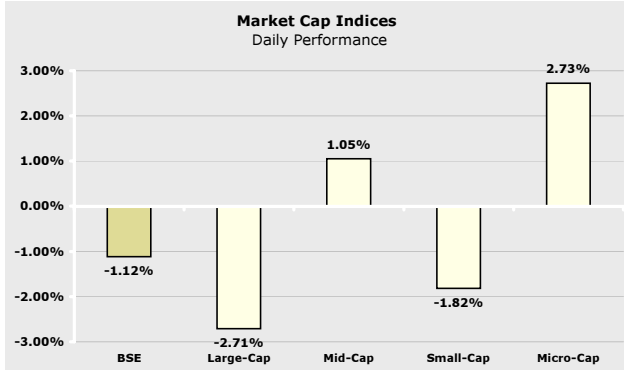
Company News

Company	Price			Volume
	Last	Change	% Change	
AINS	590	50.00	9.25	5,000
EQUIPMENT	130	10.00	8.33	8,080,000
AINV	138	10.00	7.81	2,960,000
SAFTEC	66	4.00	6.45	5,160,000
ZAIN	1100	60.00	5.76	7,737,500

Company	Price			Volume
	Last	Change	% Change	
ADNC	75	-15.00	-16.66	120,000
INVESTORS	50	-10.00	-16.66	200,000
SALBOOKH	150	-30.00	-16.66	540,000
EKHOLDING	400	-75.00	-15.78	340,000
IIC	93	-13.00	-12.26	2,080,000

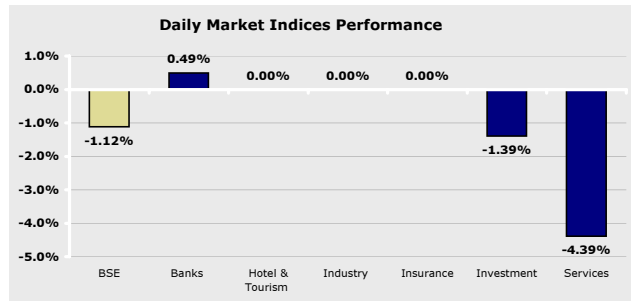
Bahrain Stock Exchange

October 28, 2008



Index *	Last	Change (%)		
		Day	Week	YTD
Large-Cap	1,048.46	-2.71	-16.39	-40.86
Mid-Cap	5,918.15	1.05	-8.32	-19.15
Small -Cap	1,625.77	-1.82	-12.47	-22.19
Micro-Cap	2,215.35	2.73	-1.56	-14.06

* Base date is 01/01/1999, Value = 1,000



Company	Price	Change (%)	Market Cap (BHD Mil)	P/E	P/B
QTEL.BSE	23.06	0.00	2,537	14.09	3.18
GLOBAL.BSE	1.45	0.00	1,799	14.10	3.99
AUB	0.30	1.27	1,355	11.94	1.68
BATELCO	0.53	-7.18	763	7.63	1.78
BMUSC	0.82	0.00	754	8.22	1.25
BARKA	1.05	-2.11	731	17.98	1.69
ABC	0.35	0.00	691	N/M	0.85
INVCORP	845.55	0.00	676	11.92	1.45
NBB	0.69	2.22	537	12.48	2.23
BBK	0.64	0.00	519	14.95	2.26

Index	Last	Change (%)		
		Day	Week	YTD
BSE	2,119.05	-1.12	-8.72	-23.09
Banks	2,622.20	0.49	-9.58	-24.63
Hotel & Tourism	2,727.78	0.00	0.41	17.82
Industry	1,376.77	0.00	0.00	-4.29
Insurance	2,301.49	0.00	0.00	-0.63
Investment	1,972.07	-1.39	-7.41	-22.56
Services	1,498.46	-4.39	-13.54	-26.23

BASI	28/10/2008	27/10/2008	Change (%)	50-day Average	Change (%)
Trading Vol. (million)	1.72	1.30	32.50	2.12	-18.81
Transactions	144	109	32.11	140	2.90
Value Traded (BHD Million)	0.39	0.31	26.08	0.89	-56.46

Company	Volume		Price	
	Shares	Market %	Last	% Change
SALAM	620,227	36.05	0.13	-8.57
ITHMR	409,085	23.78	0.43	2.38
KHCB	358,410	20.83	0.21	-2.72
BATELCO	146,866	8.54	0.53	-7.18
GFH	131,671	7.65	1.62	-9.49



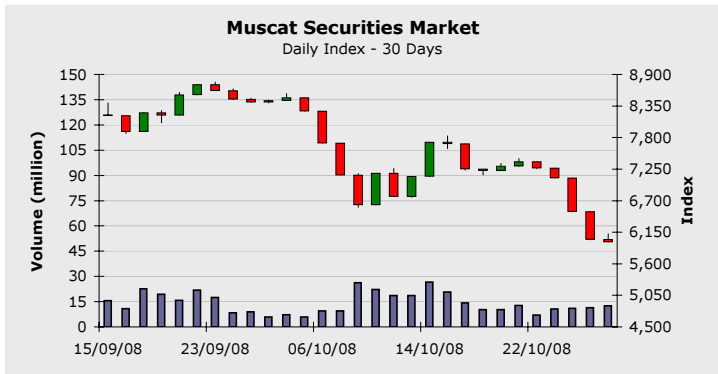
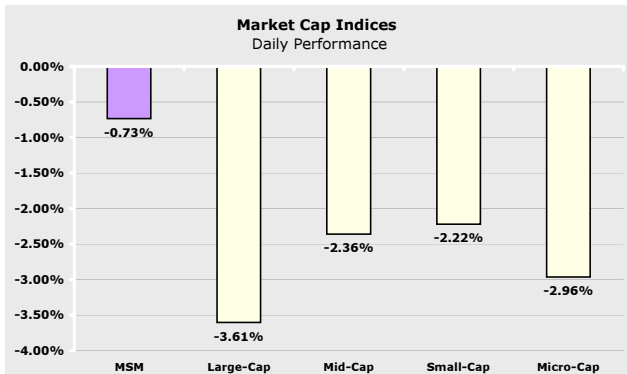
Company	Price			Volume
	Last	Change	% Change	
SEEF	0.17	0.02	9.67	35,000
ITHMR	0.43	0.01	2.38	409,085
NBB	0.69	0.02	2.22	4,000
AUB	0.80	0.01	1.26	10,000

Company	Price			Volume
	Last	Change	% Change	
GFH	1.62	-0.17	-9.49	131,671
SALAM	0.13	-0.01	-8.57	620,227
BATELCO	0.53	-0.04	-7.18	146,866
KHCB	0.21	-0.01	-2.72	358,410
BARKA	2.79	-0.06	-2.10	3,161

Company News

Muscat Securities Market

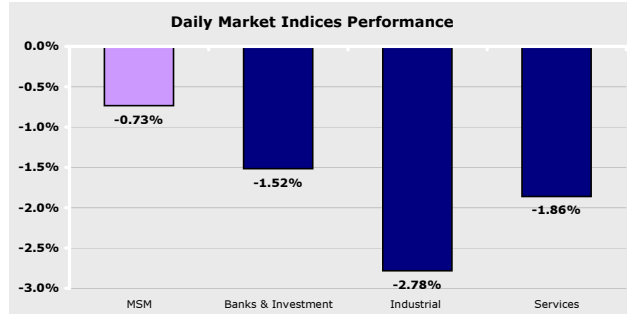
October 28, 2008



Index *	Last	Change (%)		
		Day	Week	YTD
Large-Cap	1,795.25	-3.61	-22.31	-42.53
Mid-Cap	3,241.82	-2.36	-18.66	-24.38
Small -Cap	5,249.44	-2.22	-17.89	-21.65
Micro-Cap	7,529.31	-2.96	-14.76	-17.74

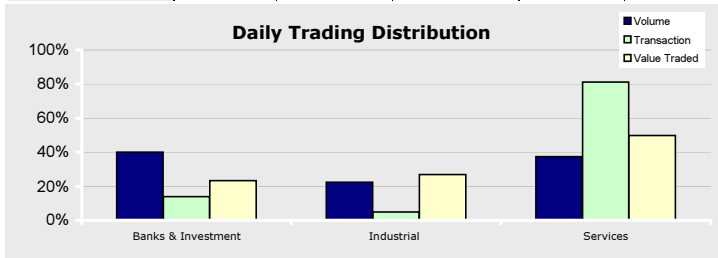
* Base date is 01/01/1999, Value = 1,000

Company	Price	Change (%)	Market Cap (RO Mil)	P/E	P/B
OTEL	1.60	0.19	1,203	8.70	3.59
BKMB	0.80	-2.44	862	8.46	1.21
NBOB	0.35	-5.41	378	7.88	1.56
RCCI	1.10	-8.33	220	5.78	2.40
OIBB	0.22	-5.96	202	6.64	1.25
BKDB	0.37	0.27	197	6.91	1.75
GECS	0.90	-7.22	189	7.51	2.60
SOMS	1.85	-0.11	185	15.17	9.00
BKSB	0.16	-2.47	158	121.54	1.61
RNSS	0.63	-6.16	153	6.44	1.32



MSM	28/10/2008	27/10/2008	Change (%)	50-day Average	Change (%)
Trading Vol. (million)	12.51	11.35	10.23	12.62	-0.85
Transactions	13,840	2,910	375.60	3,760	268.11
Value Traded (RO Million)	7.06	5.45	29.63	9.99	-29.27

Index	Last	Change (%)		
		Day	Week	YTD
MSM	5,977.12	-0.73	-18.99	-33.85
Banks & Inv.	7,322.66	-1.52	-20.59	-40.53
Industrial	5,405.87	-2.78	-22.63	-33.56
Services & Ins.	2,808.65	-1.86	-18.29	-20.51



Company	Volume		Price	
	Shares	Market %	Last	% Change
BKSB	1,465,554	11.71	0.16	-2.46
GECS	1,224,684	9.79	0.90	-7.21
AJSS	994,906	7.95	0.11	-8.06
NBOB	855,590	6.84	0.35	-5.40
RCCI	846,281	6.76	1.10	-8.33

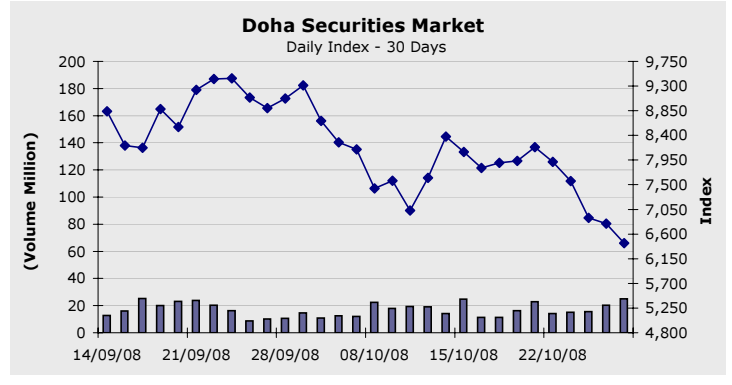
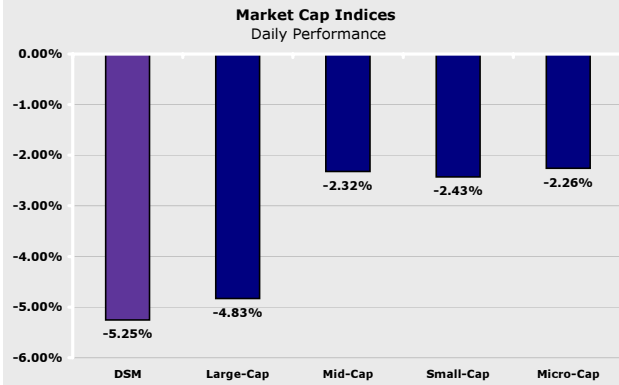
Company	Price			Volume
	Last	Change	% Change	
CMII	0.10	0.00	4.00	362,087
VOES	0.53	0.01	1.13	148,454
MHAS	13.39	0.05	0.38	16,348
BKDB	0.37	0.00	0.27	495,600
OTEL	1.60	0.00	0.18	635,760

Company	Price			Volume
	Last	Change	% Change	
OCHI	0.07	-0.02	-22.22	5,000
DMGI	0.80	-0.20	-19.91	340,000
ATMI	0.48	-0.06	-10.74	49,050
MGCI	0.45	-0.05	-9.98	17,100
PSCS	0.54	-0.06	-9.95	500

Company News

Doha Securities Market

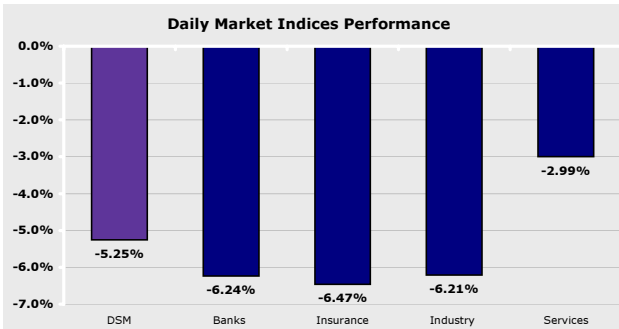
October 28, 2008



Index *	Last	Change (%)		
		Day	Week	YTD
Large-Cap	3,222.65	-4.83	-23.53	-35.90
Mid-Cap	7,457.99	-2.32	-19.56	-33.06
Small -Cap	6,325.55	-2.43	-20.38	-31.46
Micro-Cap	3,138.54	-2.26	-18.43	-30.75

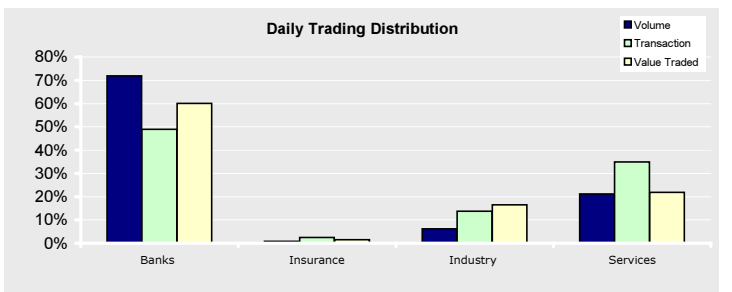
* Base date is 01/01/1999, Value = 1,000

Company	Price	Change (%)	Market Cap (QAR Mil)	P/E	P/B
IQCD	101.00	-2.88	55,550	7.38	3.40
QNBK	131.90	-5.11	31,774	10.06	1.67
QTEL	128.20	2.07	18,803	10.90	2.47
QIBK	89.20	-2.19	17,564	10.93	2.67
ERES	34.20	-10.00	15,626	18.40	2.82
AHCS	39.00	-14.10	14,801	15.12	3.57
CBQK	62.50	-6.72	12,888	7.14	1.74
QGTS	22.50	-2.17	12,600	76.45	2.69
MARK	12.00	-6.98	9,000	11.60	1.79
BRES	32.40	-7.95	8,505	14.01	1.80



DSM	28/10/2008	27/10/2008	Change (%)	50-day Average	Change (%)
Trading Vol. (million)	25.00	20.38	22.62	13.46	85.69
Transactions	9,196	9,418	-2.36	7,502	22.57
Value Traded (QAR Million)	672.08	747.52	-10.09	642.20	4.65

Index	Last	Change (%)		
		Day	Week	YTD
DSM	6,435.55	-5.25	-21.38	-32.83
Banks	8,986.37	-6.24	-22.34	28.90
Insurance	5,818.41	-6.47	-14.73	-47.27
Industry	6,138.27	-6.21	-26.08	-29.75
Services	4,910.00	-2.99	-16.93	-33.93



Company	Volume		Price	
	Shares	Market %	Last	% Change
MARK	13,716,452	54.87	12.00	-6.97
QGTS	1,974,263	7.90	22.50	-2.17
CBQK	1,383,010	5.53	62.50	-6.71
IQCD	979,992	3.92	101.00	-2.88
KCBK	951,643	3.81	9.50	-2.56

Company	Last	Price		Volume
		Change	% Change	
QSHS	40.60	3.60	9.72	123,598
QNNS	77.80	2.80	3.73	140,651
NLCS	19.50	0.50	2.63	168,247
DOHI	22.00	0.50	2.32	90,941
ABQK	40.90	0.90	2.25	987

Company	Last	Price		Volume
		Change	% Change	
AHCS	39.00	-6.40	-14.09	2,380
GHCD	19.20	-2.80	-12.72	188,366
ERES	34.20	-3.80	-10.00	1,651
DBIS	25.20	-2.70	-9.67	114,823
IFSS	55.10	-5.70	-9.37	11,413

Company News

Disclaimer:

All rights reserved. Any unauthorized use or disclosure is prohibited. This report has been prepared and issued by Zughaihi & Kabbani Financial Consultants. The information herein was obtained from various sources; we do not guarantee its accuracy or completeness. Neither the information nor any opinion expressed constitutes an offer, or an invitation to make an offer, to buy or sell any securities or any options, futures or other derivatives related to such securities ("related investments"). ZKFC may from time to time perform investment advisory or other services. This research report is prepared for general circulation and is circulated for general information only. It does not have regard to the specific investment objectives, financial situation and the particular needs of any specific person who may receive this report. Investors should seek financial advice regarding the appropriateness of investing in any securities or investment strategies discussed or recommended in this report and should understand that statements regarding future prospects may not be realized. Investors should note that income from such securities, if any, may fluctuate and that each security's price or value may rise or fall. Accordingly, investors may receive back less than originally invested. Past performance is not necessarily a guide to future performance. Foreign currency rates of exchange may adversely affect the value, price or income of any security or related investment mentioned in this report.